



MELVILLE PLACE, LONDON, N1
£450,000 LEASEHOLD

A WONDERFUL ONE BEDROOM WITH OFF STREET PARKING IN ISLINGTON

Islington | 0207 354 2480 | islington@winkworth.co.uk

Winkworth

winkworth.co.uk

See things differently



DESCRIPTION:

Spanning 556sqft is this fantastic one bedroom apartment set across the first floor of this within well-maintained, purpose built development. Accommodation includes a reception room, separate kitchen with inbuilt appliances, a private balcony, bathroom, and a generous master bedroom with fitted wardrobes. The property further benefits from a secure private parking space, an on-site porter, long lease and is offered to the market chain free.

Melville Place is set off Essex Road, offers an array of local amenities including supermarkets, eateries and bars including the De Beauvoir Deli, Salut! and The De Beauvoir Arms all within easy reach. The boutique shops and restaurants of Upper Street are close by, whilst some fantastic transport links are also available. Highbury and Islington offers the closest underground service on the Victoria line and overground services to Moorgate. The East London line is serviced from Canonbury station whilst Angel station offers the Northern line. Many bus routes can be found on Essex Road for access to Angel or on Southgate Road for effortless transport to Central London, Shoreditch, Hoxton and the City.

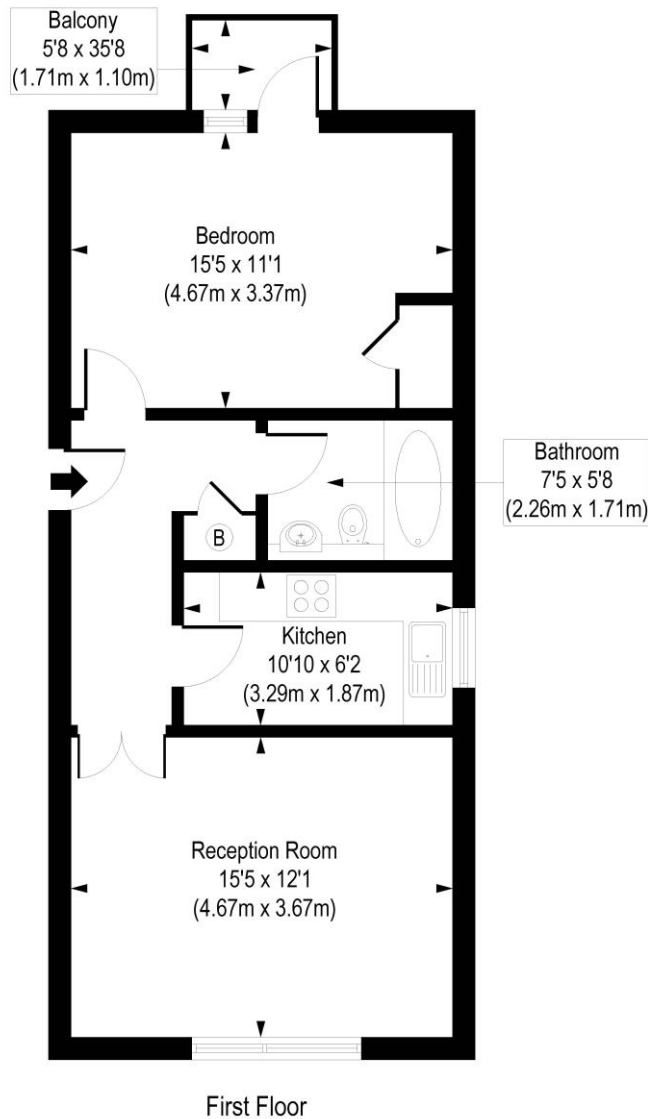
Winkworth



Winkworth

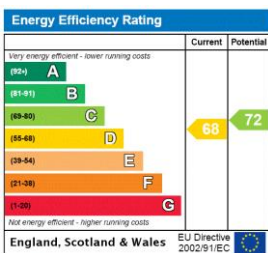
Richmond Court, Melville Place, N1

Approx. Gross Internal Floor Area 556 sq. ft / 51.68 sq. m



COMPLIANT WITH RICS CODE OF MEASURING PRACTICE. Floorplan is for illustrative purposes only and is not to scale. Every attempt has been made to ensure the accuracy of the floorplan shown, however all measurements, fixtures, fittings and data shown are an approximate interpretation for illustrative purposes only. Liability for errors, omissions or mis-statement through negligence or otherwise is hereby excluded.

This floorplan is for illustration purposes only and is not to scale. The position and size of doors, windows, appliances and other features are approximate.



Islington | 0207 354 2480 | islington@winkworth.co.uk



winkworth.co.uk

See things differently

Winkworth wishes to inform prospective buyers and tenants that these particulars are a guide and act as information only. All our details are given in good faith and believed to be correct at the time of printing but they don't form part of an offer or contract. No Winkworth employee has authority to make or give any representation or warranty in relation to this property. All fixtures and fittings, whether fitted or not are deemed removable by the vendor unless stated otherwise and room sizes are measured between internal wall surfaces, including furnishings.