



PARK HOUSE, FINCHLEY, LONDON, N3
£700,000 FREEHOLD

**A TWO BEDROOM HOUSE, SET ON A
PRESTIGIOUS ROAD.**

Finchley | 020 8349 3388 | finchley@winkworth.co.uk

Winkworth

for every step...

winkworth.co.uk



DESCRIPTION:

We are pleased to offer this unique two bedroom, end of terrace, family home, set on Hendon Lane within easy access to local amenities, transport links and in catchment for many local schools. This wonderful property comprises a large front garden, reception room with direct access to a private rear garden, kitchen, downstairs WC, two bedrooms and bathroom. Further benefits include parking and a garage. The property requires modernising throughout, but would make an ideal home whether it be for a young family or a downsizer.

Offered on a chain free basis.

AT A GLANCE

- Period style family home
- Front & Rear garden
- Two bedrooms
- Kitchen & Bathroom
- Parking & Garage
- Chain free





Winkworth



Winkworth



Winkworth



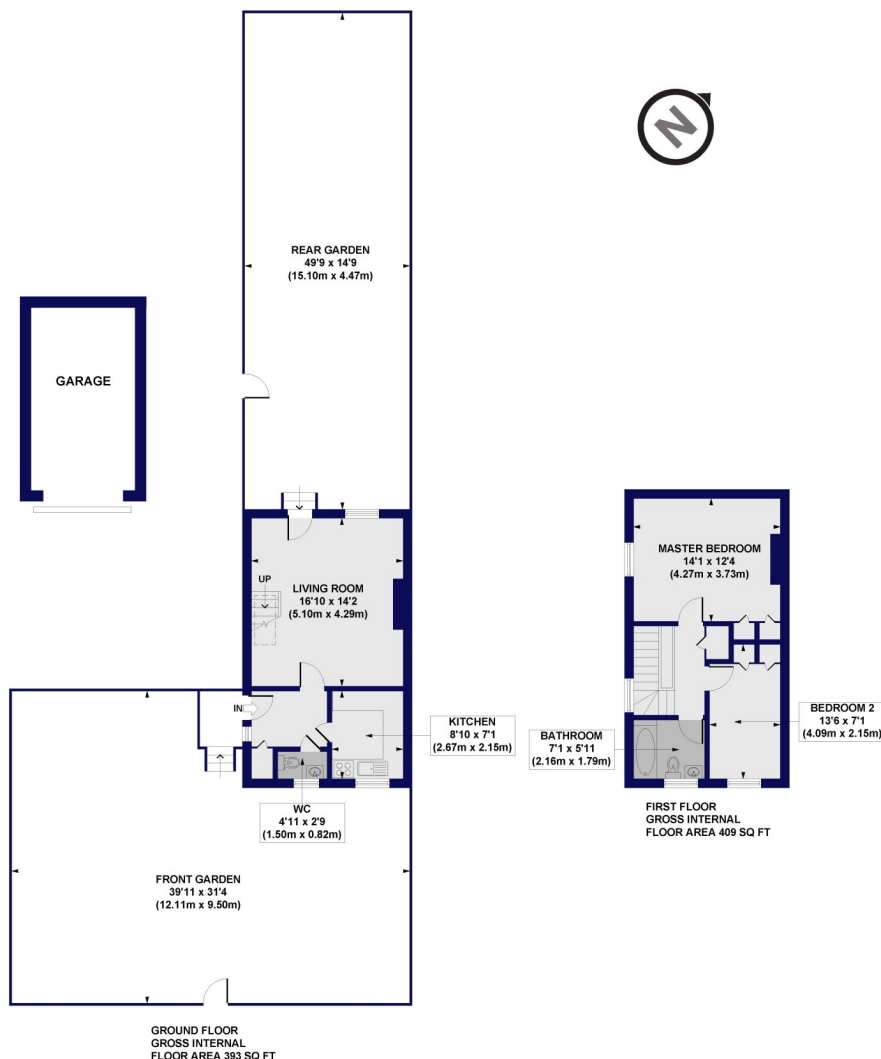
Winkworth



Winkworth

Hendon Lane, N3

Approx. Gross Internal Floor Area 802 sq. ft / 74.53 sq. m



All measurements of walls, doors, windows, fittings and appliances, including their size and location, are shown as standard sizes and do not constitute any warranty or representation by the seller, their agent or CP Creative. Any intending purchaser must satisfy himself by inspection or otherwise as to the correctness of the information contained in these plans. This plan is for illustrative purposes only and should be used as such by any prospective purchasers.

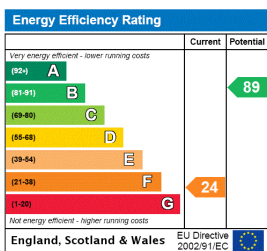
Winkworth

This floorplan is for illustration purposes only and is not to scale. The position and size of doors, windows, appliances and other features are approximate.

Tenure: Freehold

Council Tax Band: E

Where no figures are shown, we have been unable to ascertain the information. All figures that are shown were correct at the time of printing.



Finchley | 020 8349 3388 | finchley@winkworth.co.uk

Winkworth

for every step...

winkworth.co.uk

Winkworth wishes to inform prospective buyers and tenants that these particulars are a guide and act as information only. All our details are given in good faith and believed to be correct at the time of printing but they don't form part of an offer or contract. No Winkworth employee has authority to make or give any representation or warranty in relation to this property. All fixtures and fittings, whether fitted or not are deemed removable by the vendor unless stated otherwise and room sizes are measured between internal wall surfaces, including furnishings.