



RYEDALE, EAST DULWICH, LONDON, SE22
OIEO £875,000 FREEHOLD

A CHARMING, PERIOD, THREE BEDROOM FAMILY HOME IN A WONDERFUL LOCATION IN SE22.

Dulwich | 020 8299 2722 | dulwich@winkworth.co.uk

Tenure Freehold | Council Tax Band D – London Borough of Southwark | Service

Winkworth

winkworth.co.uk

See things differently

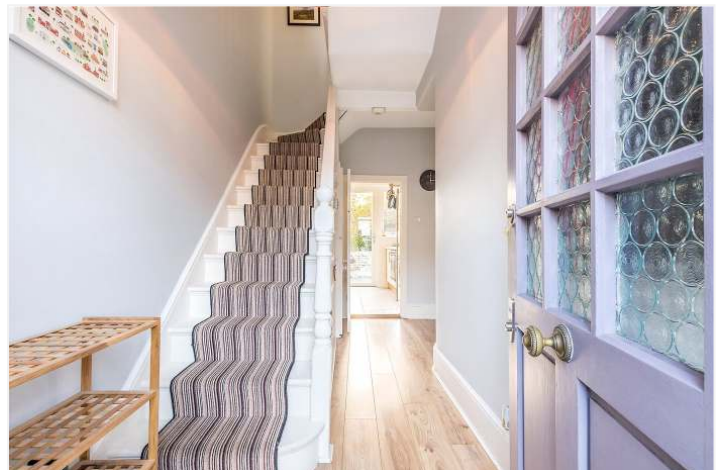


DESCRIPTION:

A charming, period, three-bedroom family home in a wonderful location in SE22. This characterful and well positioned home is situated in a quiet residential area in SE22. Comprising a large reception with high ceilings, a large dining room and a galley kitchen with doors out to a large East facing patio to rear. The first floor comprises two large double bedrooms, both boasting plenty of light, high ceilings and character. There is a newly refurbished family bathroom to rear and a further loft room with eaves storage. The property is situated within catchment for some fantastic local schools. Transport links are provided via Honor Oak Park for the East London Line and Peckham Rye for the Overground. Shops, bars and restaurants are located on Forest Hill Road, Lordship Lane and Peckham Rye Lane.

AT A GLANCE

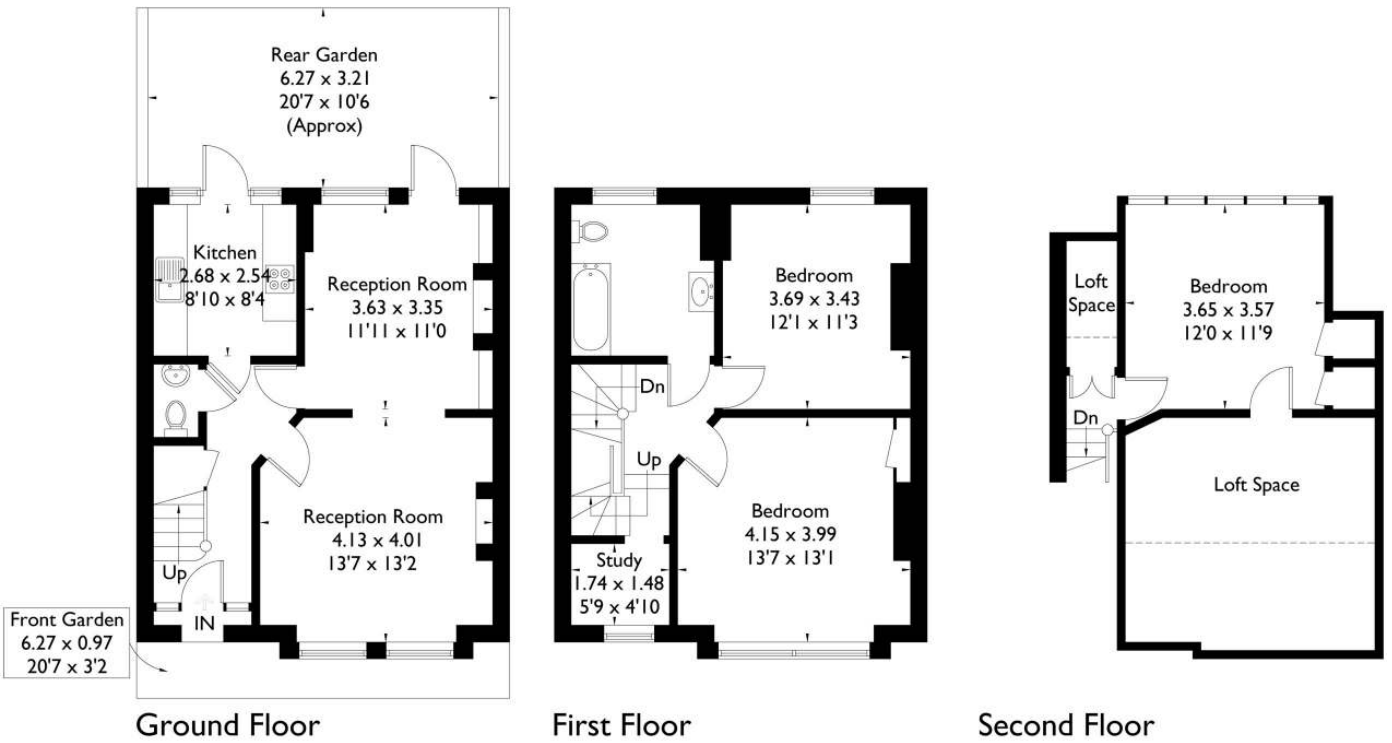
- Three Double Bedrooms
- Victorian Terraced House
- Two Receptions
- Modern Kitchen
- Bathroom & Downstairs WC
- Additional Study Area
- Front & Rear Garden
- Close to Peckham Rye Park





Ryedale, East Dulwich, SE22

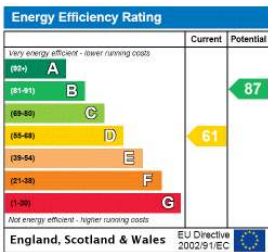
Approximate Gross Internal Area = 107.9 sq m / 1161 sq ft
(Excluding Loft Space)



FLOORPLANZ © 2017 0203 9056099 Ref: 197155

This plan is for layout guidance only. Drawn in accordance with RICS guidelines. Not drawn to scale unless stated. Windows & door openings are approximate. Whilst every care is taken in the preparation of this plan, please check all dimensions, shapes & compass bearings before making any decisions reliant upon them.

This floorplan is for illustration purposes only and is not to scale. The position and size of doors, windows, appliances and other features are approximate.



Dulwich | 020 8299 2722 | dulwich@winkworth.co.uk



winkworth.co.uk

See things differently

Winkworth wishes to inform prospective buyers and tenants that these particulars are a guide and act as information only. All our details are given in good faith and believed to be correct at the time of printing but they don't form part of an offer or contract. No Winkworth employee has authority to make or give any representation or warranty in relation to this property. All fixtures and fittings, whether fitted or not are deemed removable by the vendor unless stated otherwise and room sizes are measured between internal wall surfaces, including furnishings.