



**Hilltop Road**

Ferndown BH22 9QT

**OFFERS OVER £475,000**

**Winkworth**



**OFFERS OVER £475,000  
FREEHOLD**

**This immaculate, three double bedroom two bathroom detached bungalow is conveniently located for amenities and woodland walks and features a 13x12ft conservatory which leads to a fabulous south facing garden.**

**Further benefits include a detached garage and off road parking for multiple vehicles.**

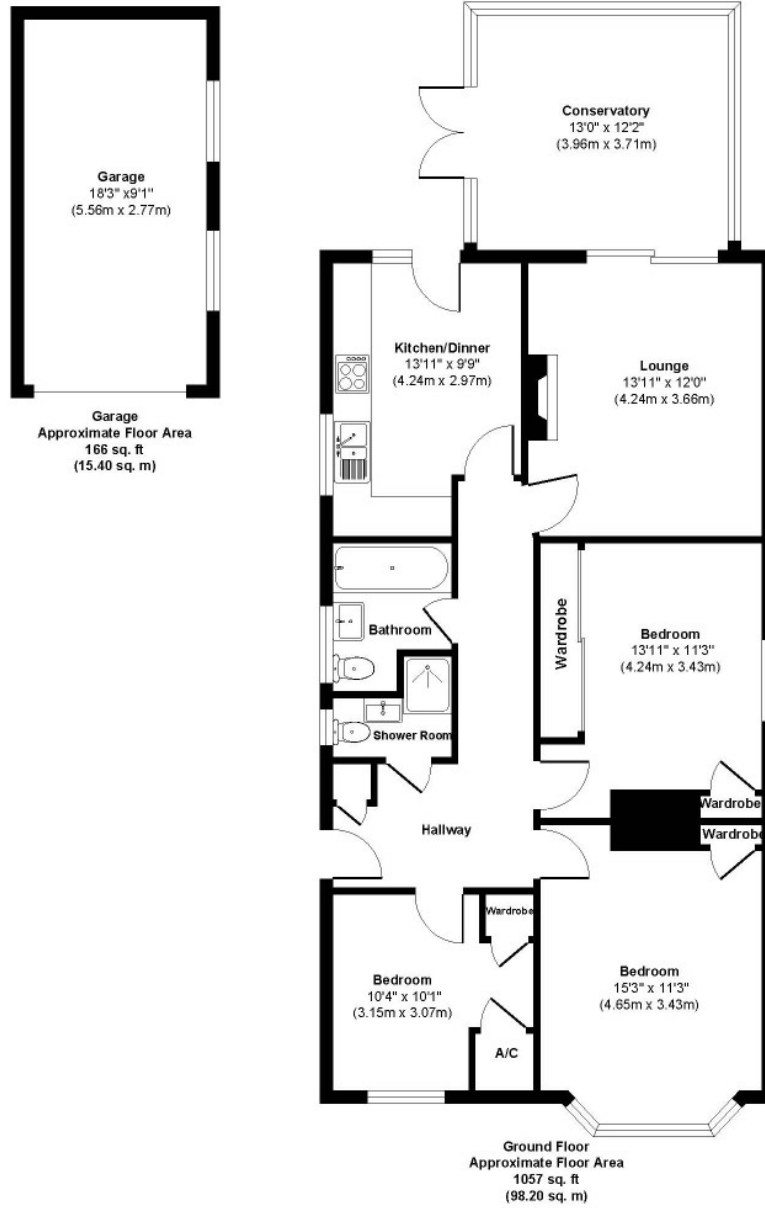
Three Double Bedrooms All With Storage  
Detached Bungalow  
South Facing Garden  
Immaculate Throughout  
Two Bathrooms  
Kitchen/Diner  
Large Conservatory  
Off Road Parking For Multiple Vehicles  
Detached Garage  
Close To Amenities

EPC D | Council Tax Band C

01202 434365  
ferndown@winkworth.co.uk



Hilltop Road



Approx. Gross Internal Floor Area 1223 sq. ft / 113.60 sq. m  
Illustration for identification purposes only, measurements approximate and not to scale.



## LOCATION

This popular, quiet residential location is just a short distance from Ferndown town centre which has a range of shops, cafes and amenities including an M&S Foodhall. Ferndown Schools are within walking distance and there are bus routes close by giving you easy access to Bournemouth, Poole & Wimborne all of which have an excellent range of shops, bars, restaurants and leisure facilities. Ferndown championship Golf Course is conveniently located nearby, award winning sandy beaches are just twenty minutes away and the A31 provides quick access to the New Forest, Southampton and London.

Winkworth Ferndown

406 Ringwood Road, Ferndown, Dorset, BH22 9AU

01202 434365 | [ferndown@winkworth.co.uk](mailto:ferndown@winkworth.co.uk)

[winkworth.co.uk/ferndown](http://winkworth.co.uk/ferndown)

**Winkworth**