



LEIGHTON GARDENS, LONDON, NW10
£1,200,000 FREEHOLD

**A FANTASTIC OPPORTUNITY TO ACQUIRE THIS LOVELY THREE
BEDROOM VICTORIAN TERRACE HOME AND RENOVATE
IMMEDIATELY, OR IN YOUR OWN TIME.**

Kensal Rise & Queens Park | 0208 960 4947 | kensalrise@winkworth.co.uk

Winkworth

winkworth.co.uk

See things differently



LOCATION:

Leighton Gardens is ideally situated to take advantage of the amenities of Chamberlayne Road, College Road and Salisbury Road. These include a range of shops bars and restaurants and great transport links at Queens Park, Kensal Green or Kensal Rise Overground Station. If it's green spaces that you are looking for then the property is sandwiched between Queens' Park to the East with Roundwood and King Edwards Parks to the west. The property is also in the catchment for great local schools including Princess Frederica's and Ark Franklin. Highly Recommended!



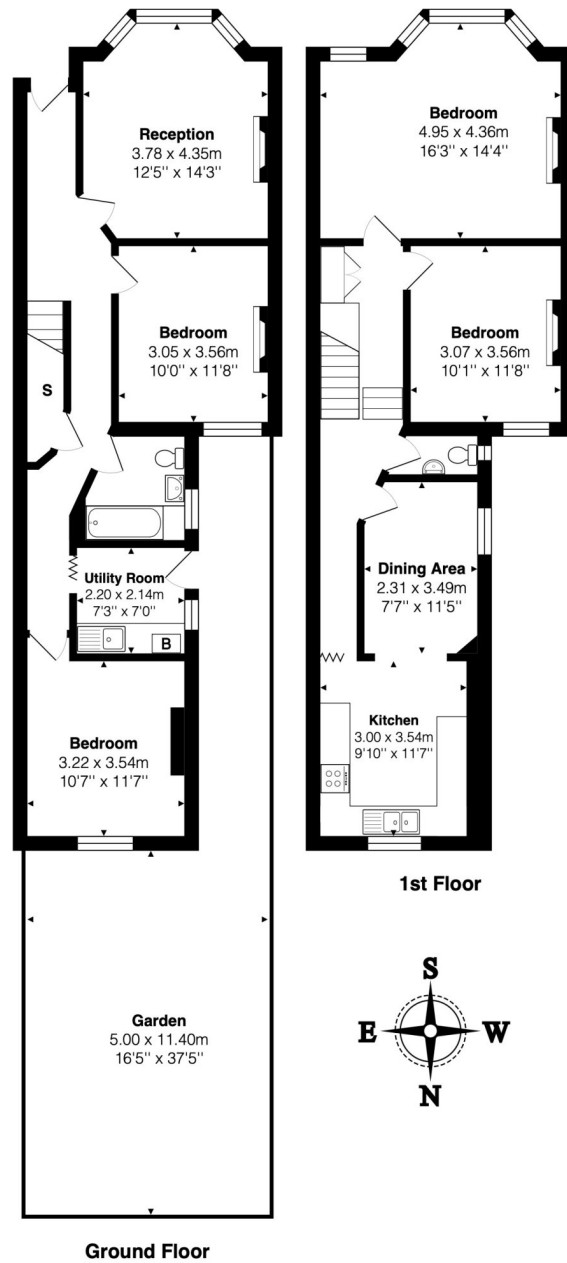
Winkworth



DESCRIPTION:

A fantastic opportunity to acquire this lovely three bedroom Victorian terrace home and renovate immediately, or in your own time. The property has been in the same family for many years and it's time for a fresh chapter in its history. Currently the property is arranged over two floors but the trend locally is to extend into the side return and the loft to create a superb four bedroom, two bathroom home which would certainly increase the living space and the end value vastly. Homes like this do not stay on the market long so please do get in touch if you would like to view.

Winkworth



Total Area: 127.8 m² ... 1376 ft² (excluding garden)
All measurements are approximate and for display purposes only

This floorplan is for illustration purposes only and is not to scale. The position and size of doors, windows, appliances and other features are approximate.

Kensal Rise & Queens Park | 0208 960 4947 | kensalrise@winkworth.co.uk



winkworth.co.uk

See things differently

winkworth wishes to inform prospective buyers and tenants that these particulars are a guide and act as information only. All our details are given in good faith and believed to be correct at the time of printing but they don't form part of an offer or contract. No winkworth employee has authority to make or give any representation or warranty in relation to this property. All fixtures and fittings, whether fitted or not are deemed removable by the vendor unless stated otherwise and room sizes are measured between internal wall surfaces, including furnishings.