



KNAPDALE CLOSE, UNITED KINGDOM, SE23
£625,000 FREEHOLD

THREE BEDROOM PURPOSE BUILT HOUSE IN THE HEART OF FOREST HILL

Forest Hill | | foresthill@winkworth.co.uk

Winkworth

for every step...

winkworth.co.uk

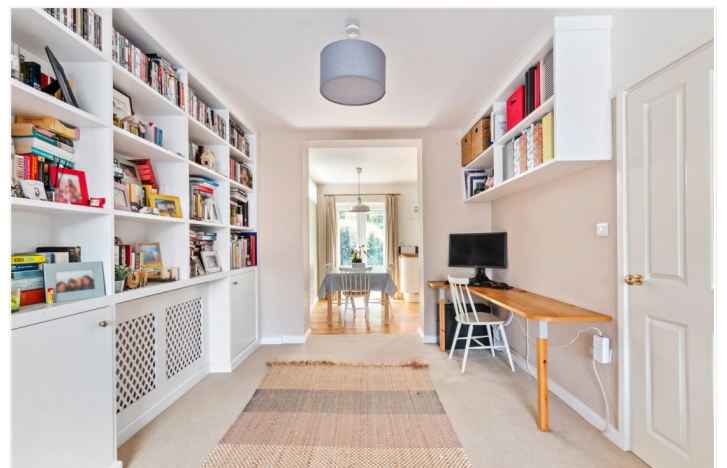


DESCRIPTION:

A beautifully presented, three bedrooms house with southeast-facing garden, in a quiet, yet central location, minutes away from the Horniman Museum.

AT A GLANCE

- Three bedrooms
- Superb condition and presentation
- Semi open-plan living/kitchen/dining
- Southeast-facing garden
- 15 Mins walk to Forest Hill station
- Quiet location
- 1048 Sq Ft

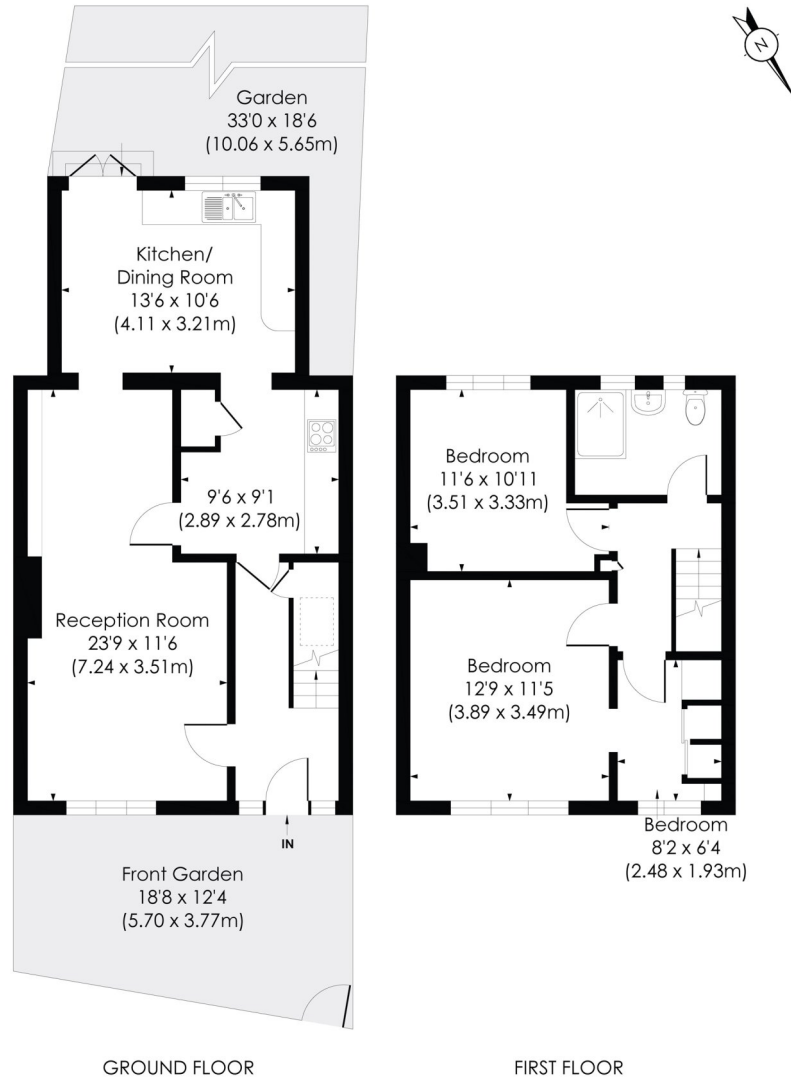




KNAPDALE CLOSE, SE23

Approx. Gross Internal Floor Area

1048 Sq. ft/97.35 Sq. m



© Pixangle Property Marketing Ltd. info@pixangle.com Tel: 0208 870 2118

pixangle
PROPERTY MARKETING

This floor plan has been prepared for the purpose of illustration only in accordance with the latest RICS code of measuring practice and is not to scale. All measurements and areas are approximate and whilst every effort has been made to ensure the accuracy of the plan contained here, no responsibility is taken for any error, omission or misstatement.

This floorplan is for illustration purposes only and is not to scale. The position and size of doors, windows, appliances and other features are approximate.

Energy Efficiency Rating		Current	Potential
Very energy efficient - lower running costs			
(92)	A		
(81-91)	B		
(69-80)	C		
(55-68)	D		
(39-54)	E		
(21-58)	F		
(1-20)	G		
Not energy efficient - higher running costs			
England, Scotland & Wales		71	84
EU Directive 2002/91/EC			

Tenure: Freehold

Term: 0 year and 0 months

Service Charge: £0 per annum

Ground Rent: £ 0 Annually (subject to increase)

Council Tax Band: D

Where no figures are shown, we have been unable to ascertain the information. All figures that are shown were correct at the time of printing.

Winkworth

Forest Hill | | foresthill@winkworth.co.uk

for every step...

winkworth.co.uk

Winkworth wishes to inform prospective buyers and tenants that these particulars are a guide and act as information only. All our details are given in good faith and believed to be correct at the time of printing but they don't form part of an offer or contract. No Winkworth employee has authority to make or give any representation or warranty in relation to this property. All fixtures and fittings, whether fitted or not are deemed removable by the vendor unless stated otherwise and room sizes are measured between internal wall surfaces, including furnishings.