



WALCOT STREET, SOMERSET, BA1
£550,000 LEASEHOLD

Winkworth



WALCOT STREET, SOMERSET, BA1

**Quiet no through road | short level walk to central Bath |
Allocated secure parking | 2 Bedrooms | Grade II Listed |
Riverside | Current holiday let.**

Entrance Hall | Drawing Room | Kitchen / Breakfast Room |
2 Double Bedrooms | Bathroom.
Circa 750sqft

A quality Grade II Listed Georgian maisonette in the centre
of Bath.

This contemporary spin on a Grade II Listed Georgian
apartment is a true one off in the city. The apartment has
a prime location in the centre of Bath, whilst being on a
quiet no through road.

The property is beautifully presented throughout and
currently runs as a successful holiday let.

The living area faces east towards the River Avon and with
views over Bath and up towards Bathwick Hill.

The smart kitchen includes a 4 ring induction hob, a multi-
purpose microwave, grill and oven. There is a large fridge
and separate freezer, a dishwasher, and plenty of cooking
space.

The pretty bedrooms are on the upper floor, again
beautifully designed and with gorgeous views.

There is a stylish bathroom with large bath with overhead
shower, a small hand-basin with cupboard under and a
WC.

Tenure:
All main connected
Broadband
BANES Council Tax
EPC





Approximate Gross Internal Area :- 69 sq m / 743 sq ft

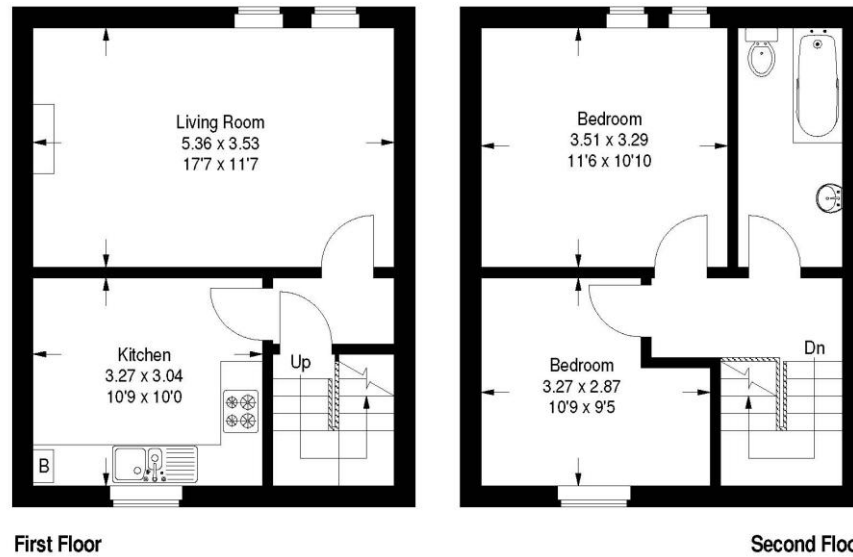


Illustration for identification purposes only, measurements are approximate, not to scale.
FloorplansuSketch.com © 2011 (ID7364)

Bath | 01225 829 000 | bath@winkworth.co.uk

winkworth.co.uk

Winkworth wishes to inform prospective buyers and tenants that these particulars are a guide and act as information only. All our details are given in good faith and believed to be correct at the time of printing but they don't form part of an offer or contract. No Winkworth employee has authority to make or give any representation or warranty in relation to this property. All fixtures and fittings, whether fitted or not are deemed removable by the vendor unless stated otherwise and room sizes are measured between internal wall surfaces, including furnishings.

