



**CARRIERS COURT, HIGH STREET, SHREWTON, SALISBURY, SP3**  
**SIX MONTH LET £1200 PCM UNFURNISHED, NO PETS**

## **A MODERN VILLAGE HOUSE TO LET WITH A GARDEN AND OFF-STREET PARKING**

Devizes | 01380 729 777 | [devizes@winkworth.co.uk](mailto:devizes@winkworth.co.uk)

Tenant Fees Apply: Details of fees for tenant referencing, tenancy agreement admin fees and renewal fees are available on the Winkworth website and the link can be found with the displayed rent for the property. Tenants should ensure they are fully conversant with these upfront fees and other costs that are involved at the outset of the tenancy before making an offer to rent and your local Winkworth office will provide written details upon request.

[winkworth.co.uk](http://winkworth.co.uk)

**Winkworth**

for every step...



## DESCRIPTION:

Number 3 Carriers Court is an immaculately presented, modern house with well-balanced and spacious accommodation across two floors situated in the heart of Shrewton. Three good double bedrooms upstairs with one ensuite and one family bathroom. Downstairs there are hard floors throughout, a fully fitted, modern kitchen/breakfast room and large sitting room with French windows out to a courtyard garden. Ideally suited to a professional couple or small family, the property is available immediately for six months let. Behind the garden are two allocated parking spaces.

The village of Shrewton is situated in a valley on Salisbury Plain, some twelve miles north of Salisbury and around six miles west of Amesbury.

Facilities include a school, convenience store, butchers, and a church.

EPC – Band C

Wiltshire Council Tax Band D

Heating: Air Source Heat Pump

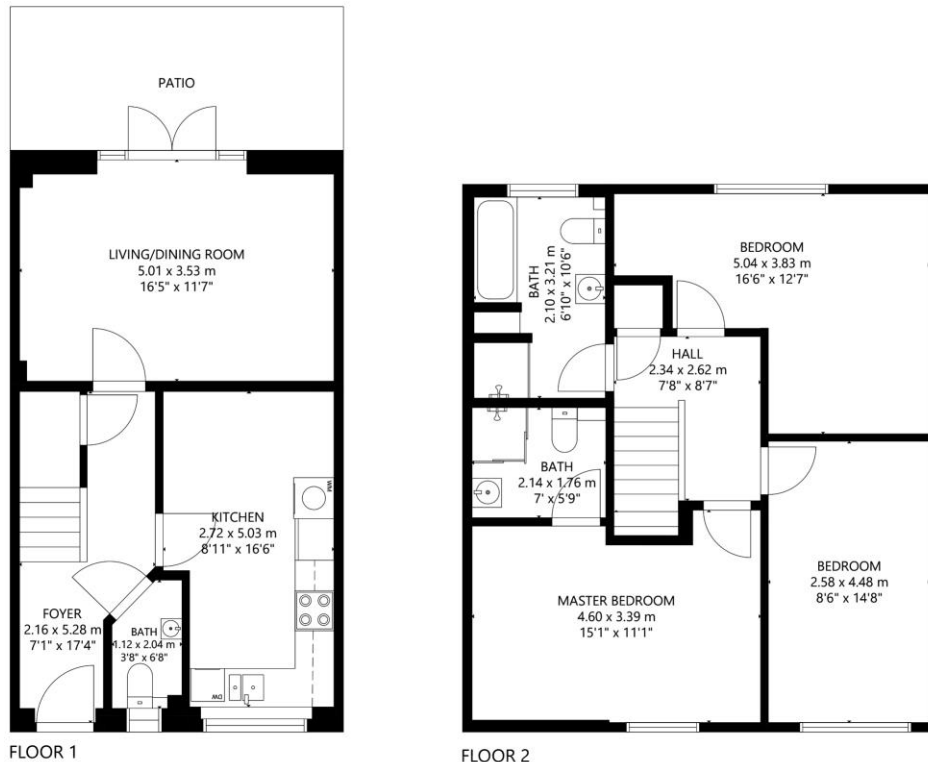
**Winkworth**

for every step...



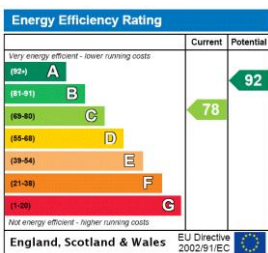
**Winkworth**

for every step...



GROSS INTERNAL AREA  
 TOTAL: 1,130 sq ft/ 105 m<sup>2</sup>  
 FLOOR 1: 471 sq ft/ 44 m<sup>2</sup>, FLOOR 2: 659 sq ft/ 61 m<sup>2</sup>  
 SIZE AND DIMENSIONS ARE APPROXIMATE, ACTUAL MAY VARY.

This floorplan is for illustration purposes only and is not to scale. The position and size of doors, windows, appliances and other features are approximate.



Devizes | 01380 729 777 | devizes@winkworth.co.uk

for every step...

winkworth.co.uk

Winkworth wishes to inform prospective buyers and tenants that these particulars are a guide and act as information only. All our details are given in good faith and believed to be correct at the time of printing but they don't form part of an offer or contract. No Winkworth employee has authority to make or give any representation or warranty in relation to this property. All fixtures and fittings, whether fitted or not are deemed removable by the vendor unless stated otherwise and room sizes are measured between internal wall surfaces, including furnishings.