



**WESTBOURNE PARK ROAD, W11**  
**£850 PER WEEK (£3,683.33 PCM) Furnished**

**A WONDERFULLY BRIGHT AND VERY CHARMING ONE BEDROOM FLAT ON THE RAISED GROUND FLOOR OF THIS PERIOD BUILDING.**

Short Let, 1 Bedroom, 1 Reception Room, 1 Bathroom, Flat/Apartment, Ground Floor, Period, Furnished, 550 Approx. Sq Ft

**Winkworth**





### DESCRIPTION:

A beautifully presented, bright and charming one bedroom flat on the raised ground floor of this period building situated just a stone's throw from Notting Hill's buzzing Portobello Road. The flat offers a fantastic reception room with original wood floors, high ceilings, fire place and a lovely double bay window. The flat also offers a superb eat in kitchen, a quiet double bedroom located at the back of the building with fitted wardrobe and a separate bathroom. The property is available for short-let on a furnished basis and viewings are highly recommended.

### LOCATION:

Westbourne Park Road runs through Notting Hill, parallel and just to the north of Westbourne Grove and its many boutiques and amenities.

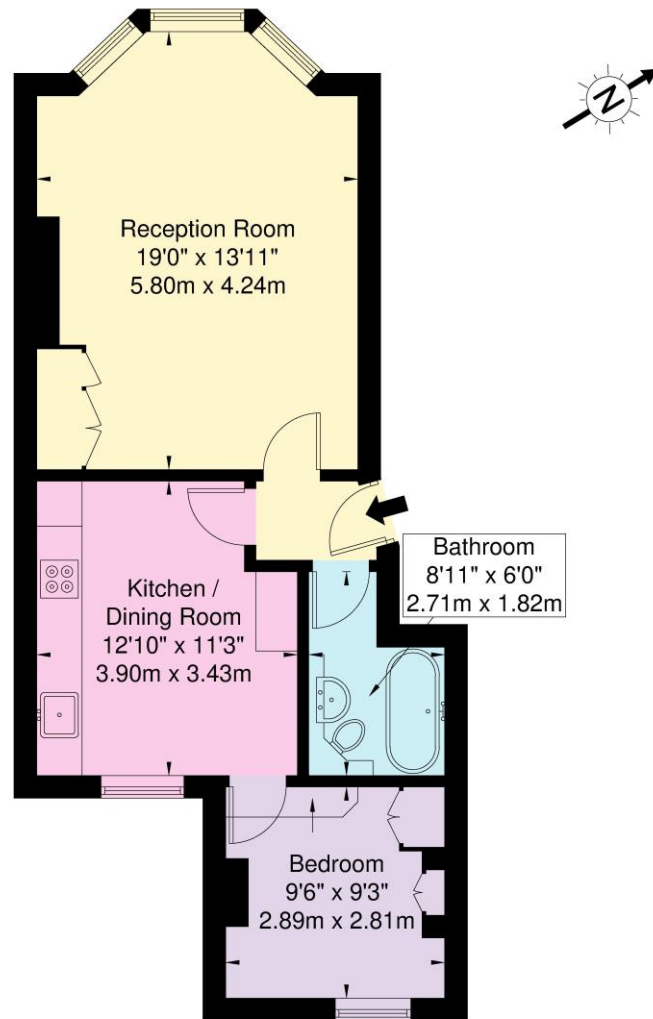
### LOCAL AUTHORITY AND COUNCIL TAX BAND:

Royal Borough of Kensington and Chelsea (Band E)



# Westbourne Park Road W11 1EE

Approx. Gross Internal Area = 51.1 sq m / 550 sq ft



Ground Floor

Ref

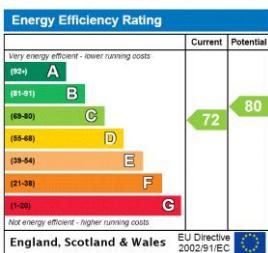
Copyright

**BLEU  
PLAN**

The Floor plan is not to scale and measurements and areas shown are approximate and therefore should be used for illustrative purposes only. The plan has been prepared in accordance with the RICS code of Measuring Practice and whilst we have confidence in the information produced it must not be relied on. If there is any aspect of particular importance, you should carry out or commission your own inspection of the property.

Copyright @ BLEUPLAN

This floorplan is for illustration purposes only and is not to scale. The position and size of doors, windows, appliances and other features are approximate.



Notting Hill | 0207 727 3227 | nottinghill@winkworth.co.uk



winkworth.co.uk

for every step...

winkworth wishes to inform prospective buyers and tenants that these particulars are a guide and act as information only. All our details are given in good faith and believed to be correct at the time of printing but they don't form part of an offer or contract. No Winkworth employee has authority to make or give any representation or warranty in relation to this property. All fixtures and fittings, whether fitted or not are deemed removable by the vendor unless stated otherwise and room sizes are measured between internal wall surfaces, including furnishings.