



SOUTHAMPTON STREET, BERKSHIRE, RG1 2QL
£1,350 PER MONTH FURNISHED

MODERN ONE BEDROOM GROUND FLOOR
APARTMENT IN READING TOWN CENTRE.
AVAILABLE 6TH SEPTEMBER.

Reading | 0118 4022 300 | reading@winkworth.co.uk



for every step...

winkworth.co.uk



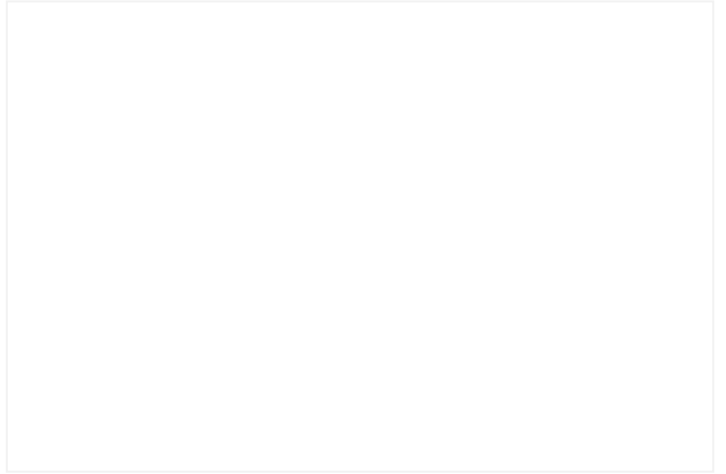
DESCRIPTION:

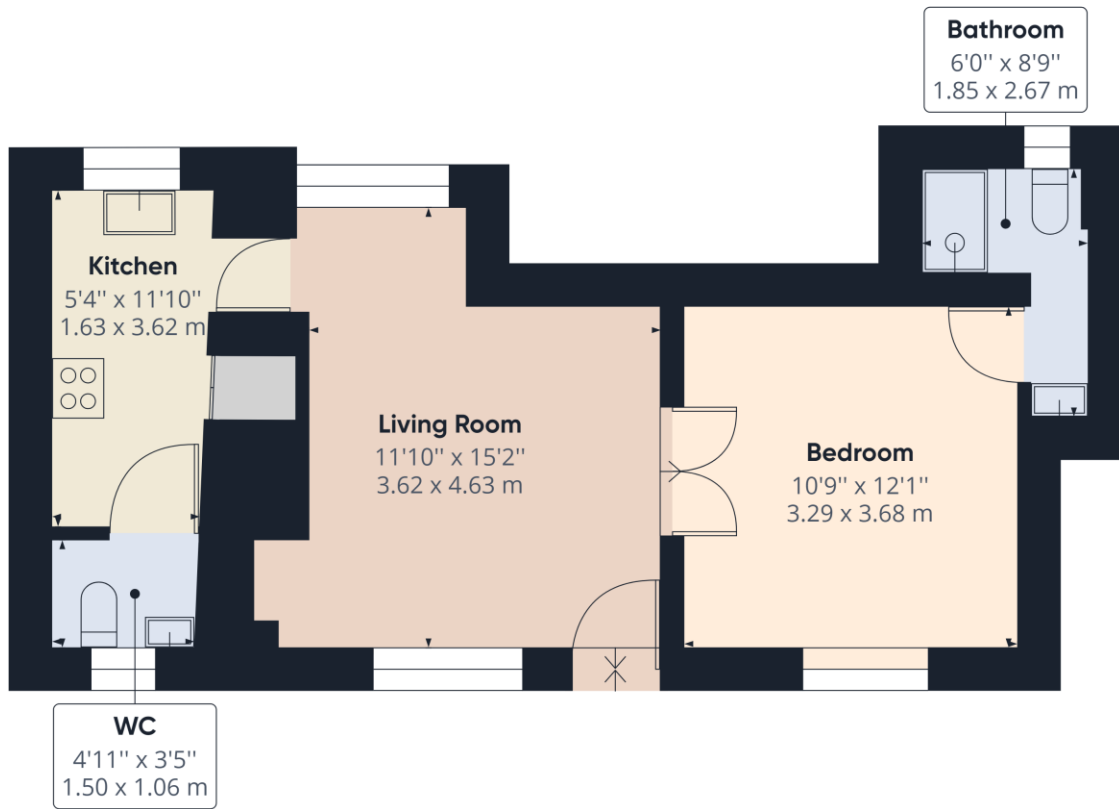
Modern one bedroom ground floor apartment located in Reading town centre in this beautiful Grade II listed building. The property benefits from a private entrance and comprises living room, kitchen with integrated appliances, one double bedroom, modern shower room and a cloakroom. Gated off road parking space included. Available 6th September 2024. Furnished.

AT A GLANCE

- One bedroom cottage
- Located in Reading town centre
- Original character features
- Council tax band A
- Secure off road parking space
- Available 6th September
- Furnished







Approximate total area⁽¹⁾
442.39 ft²
41.10 m²

(1) Excluding balconies and terraces

While every attempt has been made to ensure accuracy, all measurements are approximate, not to scale. This floor plan is for illustrative purposes only.

GIRAFFE360

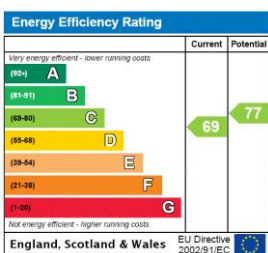
This floorplan is for illustration purposes only and is not to scale. The position and size of doors, windows, appliances and other features are approximate.

Deposit: £1,557.69

Holding Deposit: £311.53

Council Tax Band: A

Where no figures are shown, we have been unable to ascertain the information. All figures that are shown were correct at the time of printing.



Reading | 0118 4022 300 | reading@winkworth.co.uk

Winkworth

for every step...

winkworth.co.uk

Winkworth wishes to inform prospective buyers and tenants that these particulars are a guide and act as information only. All our details are given in good faith and believed to be correct at the time of printing but they don't form part of an offer or contract. No Winkworth employee has authority to make or give any representation or warranty in relation to this property. All fixtures and fittings, whether fitted or not are deemed removable by the vendor unless stated otherwise and room sizes are measured between internal wall surfaces, including furnishings.