



FLAT 3, PORTLAND RISE, LONDON, N4
£650,000 SHARE OF FREEHOLD

A BEAUTIFUL, TWO BEDROOM, PERIOD
CONVERSION SET MOMENTS FROM THE
TUBE IN N4.

Highbury | 0207 989 7000 | highbury@winkworth.co.uk

Winkworth

winkworth.co.uk

See things differently



DESCRIPTION:

A wonderfully spacious, two double bedroom, period conversion set across the first floor of this handsome Victorian building in N4. Standing close to 750sqft, the property has been stylishly decorated and offers a wealth of natural light with large, double-glazed sash windows throughout. Accommodation comprises of a beautiful bright open plan reception room and well-proportioned kitchen/diner, complete with plentiful worktop space and storage. Both bedrooms are good sized doubles with large windows allowing ample light throughout and the principal bedroom overlooks the peaceful communal garden. The property is completed with a stylish bathroom. There is ample storage in the flat as well as communal storage on the lower-ground floor which can be used for bikes. This property offers the discerning purchaser an amazing home in an enviable location, and the exposed brick and gorgeous design makes it truly unique.

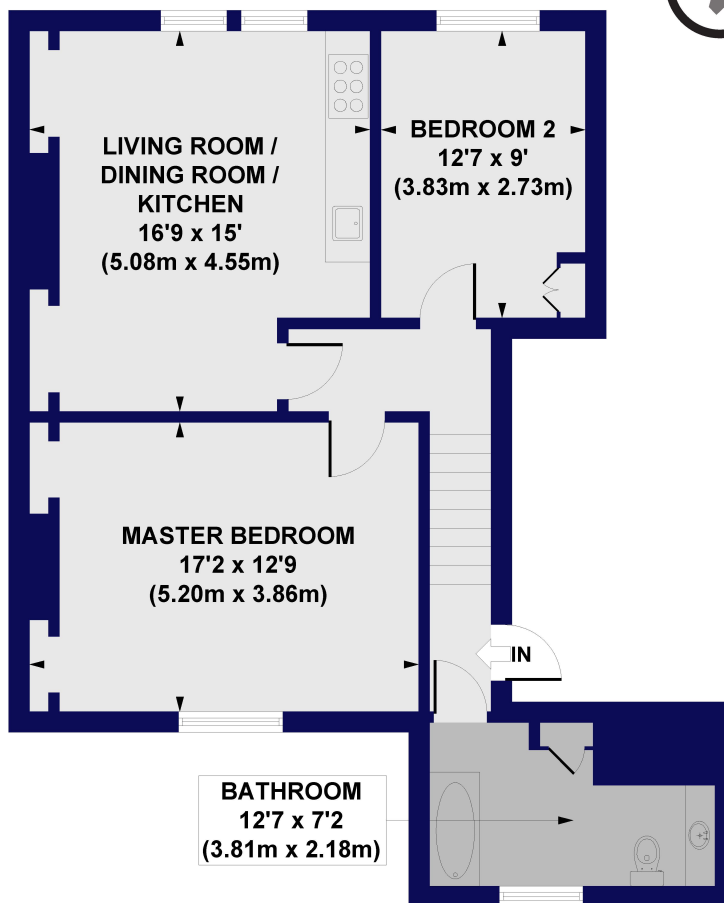
Portland Rise is a Victorian street and is home to some magnificent period buildings. It runs between Green Lanes and Seven Sisters Road but is blocked at one end, making it very quiet with little through-traffic. The road lends itself very well to proximity to local green spaces with close access to both Clissold and Finsbury Parks, as well as the East and West Reservoirs, and all that they offer. Tube access is easy, being only a short distance from Finsbury Park station (Piccadilly Line, Victoria Line and National Rail) with Manor House and Arsenal also close by. Numerous bus links provide easy access to the City and West End.

Winkworth



Winkworth

Portland Rise, N4
 Approx. Gross Internal Floor Area 732 sq. ft / 67.97 sq. m

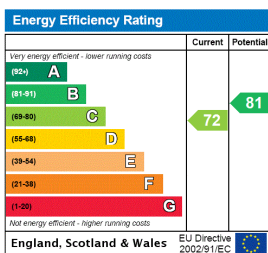


FIRST FLOOR / SECOND FLOOR

All measurements of walls, doors, windows, fittings and appliances, including their size and location, are shown as standard sizes and do not constitute any warranty or representation by the seller, their agent or CP Creative. Any intending purchaser must satisfy himself by inspection or otherwise as to the correctness of the information contained in these plans. This plan is for illustrative purposes only and should be used as such by any prospective purchasers.

Winkworth

This floorplan is for illustration purposes only and is not to scale. The position and size of doors, windows, appliances and other features are approximate.



Highbury | 0207 989 7000 | highbury@winkworth.co.uk



winkworth.co.uk

See things differently

Winkworth wishes to inform prospective buyers and tenants that these particulars are a guide and act as information only. All our details are given in good faith and believed to be correct at the time of printing but they don't form part of an offer or contract. No Winkworth employee has authority to make or give any representation or warranty in relation to this property. All fixtures and fittings, whether fitted or not are deemed removable by the vendor unless stated otherwise and room sizes are measured between internal wall surfaces, including furnishings.