



LONG LANE, LONDON, N3  
£350,000 LEASEHOLD

A RECENTLY REFURBISHED TWO BEDROOM  
FLAT, SET IN AN IDEAL LOCATION FOR  
TRANSPORT LINKS & AMENITIES.

Finchley | 020 8349 3388 | [finchley@winkworth.co.uk](mailto:finchley@winkworth.co.uk)

**Winkworth**

for every step...

[winkworth.co.uk](http://winkworth.co.uk)



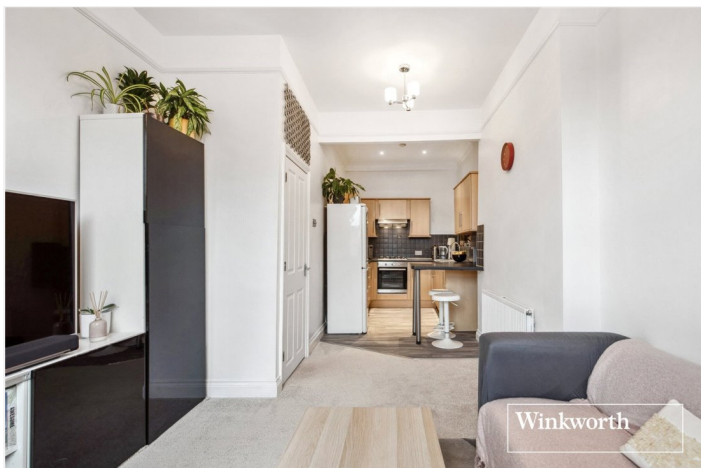
## DESCRIPTION:

We are pleased to offer this, larger than average and recently refurbished, two double bedroom, first floor flat, which is ideally located for local amenities, such as Victoria Park, Ballards Lane shopping amenities and Finchley Central underground station. The property offers two double bedrooms, modern fitted bathroom and an open plan living / dining / kitchen area. This lovely flat would be an ideal first time buyers purchase or buy to let investment and is being sold on a chain free basis.

An internal viewing is highly recommended.

## AT A GLANCE

- First floor flat
- Refurbished to a high standard
- Two bedrooms
- modern kitchen & bathroom
- Open plan living
- Long lease
- Chain free





Winkworth



Winkworth



Winkworth

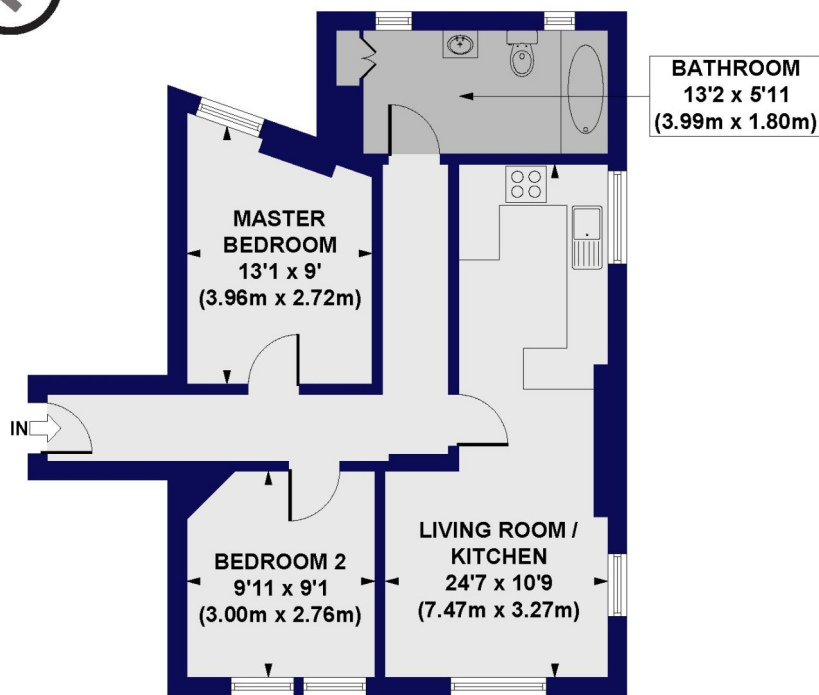


Winkworth



Winkworth

**Long Lane, N3**  
**Approx. Gross Internal Floor Area 611 sq. ft / 56.77 sq. m**



**FIRST FLOOR**

All measurements of walls, doors, windows, fittings and appliances, including their size and location, are shown as standard sizes and do not constitute any warranty or representation by the seller, their agent or CP Creative. Any intending purchaser must satisfy himself by inspection or otherwise as to the correctness of the information contained in these plans. This plan is for illustrative purposes only and should be used as such by any prospective purchasers.

**Winkworth**

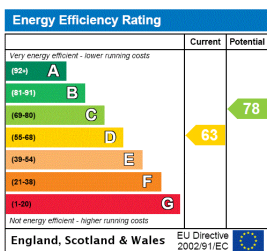
This floorplan is for illustration purposes only and is not to scale. The position and size of doors, windows, appliances and other features are approximate.

**Tenure:** Leasehold

**Term:** approx 103 years left on the lease

**Council Tax Band:** C

Where no figures are shown, we have been unable to ascertain the information. All figures that are shown were correct at the time of printing.



Finchley | 020 8349 3388 | finchley@winkworth.co.uk

**Winkworth**

for every step...

winkworth.co.uk

Winkworth wishes to inform prospective buyers and tenants that these particulars are a guide and act as information only. All our details are given in good faith and believed to be correct at the time of printing but they don't form part of an offer or contract. No Winkworth employee has authority to make or give any representation or warranty in relation to this property. All fixtures and fittings, whether fitted or not are deemed removable by the vendor unless stated otherwise and room sizes are measured between internal wall surfaces, including furnishings.