



AYLESTONE AVENUE, LONDON, NW6
£695,000 LEASEHOLD

**SPACIOUS TWO DOUBLE BEDROOM APARTMENT ON
ONE OF THE NICEST ROADS IN BRONDESBURY PARK**

Kensal Rise & Queens Park | 0208 960 4947 | kensalrise@winkworth.co.uk

Winkworth

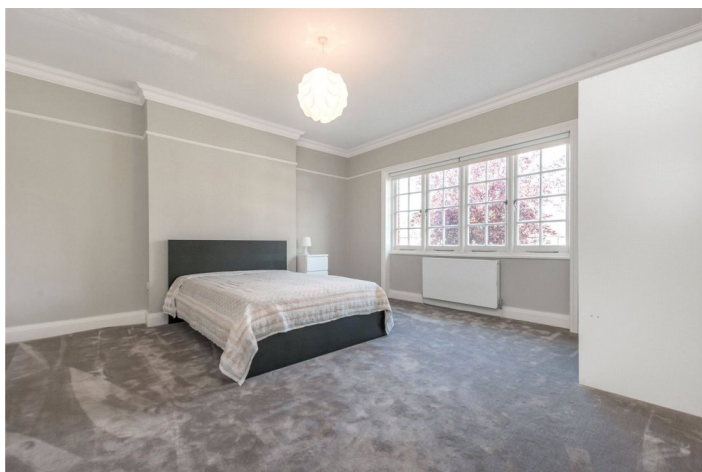
winkworth.co.uk

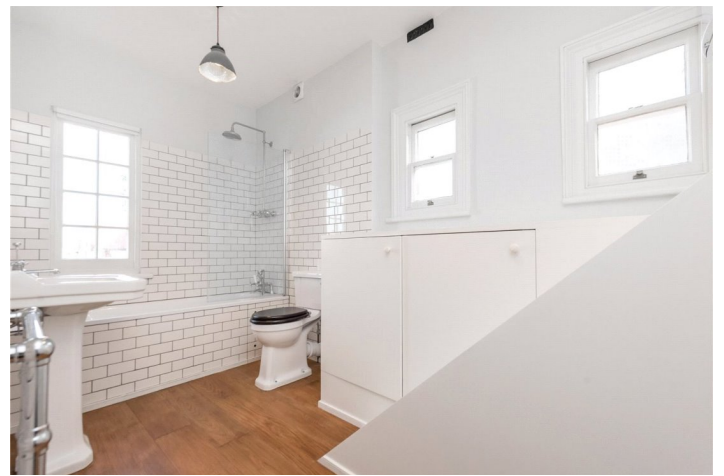
See things differently



LOCATION:

Aylestone Avenue is a broad, attractive, tree lined street close to the amenities of Willesden Green. Willesden Green tube station on the Jubilee line (Zone 2) can be found along with numerous bus routes in and out of the city.

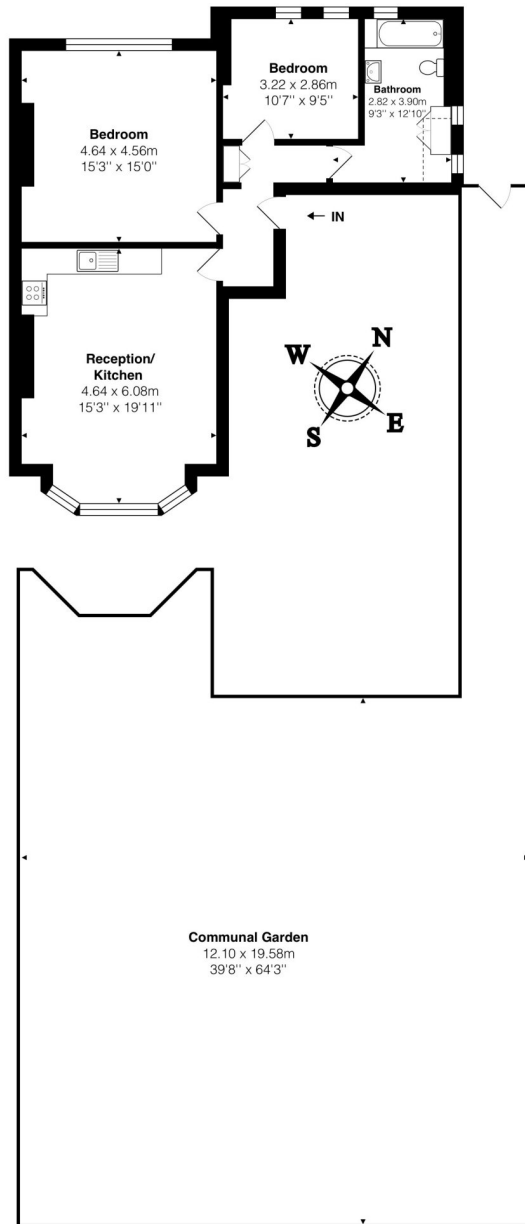




DESCRIPTION:

This spacious apartment comprises of two good size double bedrooms, a fully tiled three piece bathroom with a washing integrated machine, large open plan kitchen reception. Additional benefits include original wooden flooring and access to a shared very big communal garden.

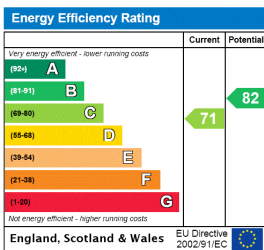




Total Area: 73.5 m² ... 791 ft² (excluding garden)

All measurements are approximate and for display purposes only

This floorplan is for illustration purposes only and is not to scale. The position and size of doors, windows, appliances and other features are approximate.



Kensal Rise & Queens Park | 0208 960 4947 | kensalrise@winkworth.co.uk



winkworth.co.uk

See things differently

winkworth wishes to inform prospective buyers and tenants that these particulars are a guide and act as information only. All our details are given in good faith and believed to be correct at the time of printing but they don't form part of an offer or contract. No winkworth employee has authority to make or give any representation or warranty in relation to this property. All fixtures and fittings, whether fitted or not are deemed removable by the vendor unless stated otherwise and room sizes are measured between internal wall surfaces, including furnishings.