



**CABLE PLACE, GREENWICH, LONDON, SE10**  
**£2,650 PER MONTH**

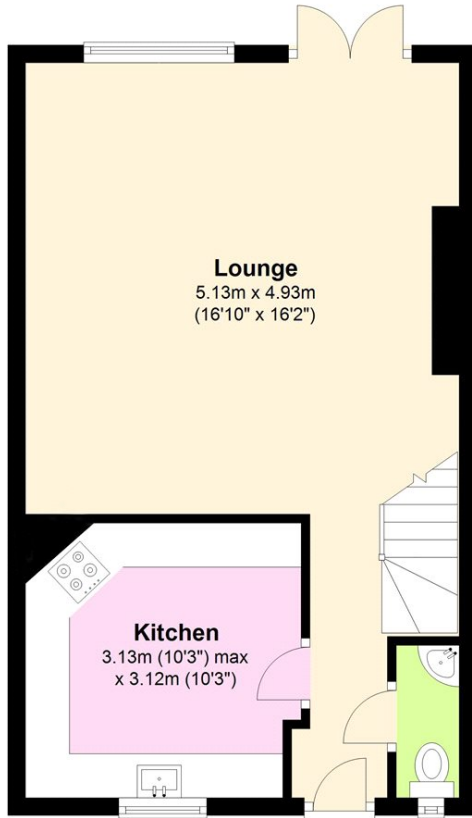
**DESCRIPTION:**

A well-presented three bedroom, two bathroom modern house that is part of this small private development, located just off Point Hill in West Greenwich. Offered unfurnished and available immediately, your earliest viewing is advised.

**Blackheath** | 0208 8520999 | [blackheath@winkworth.co.uk](mailto:blackheath@winkworth.co.uk)

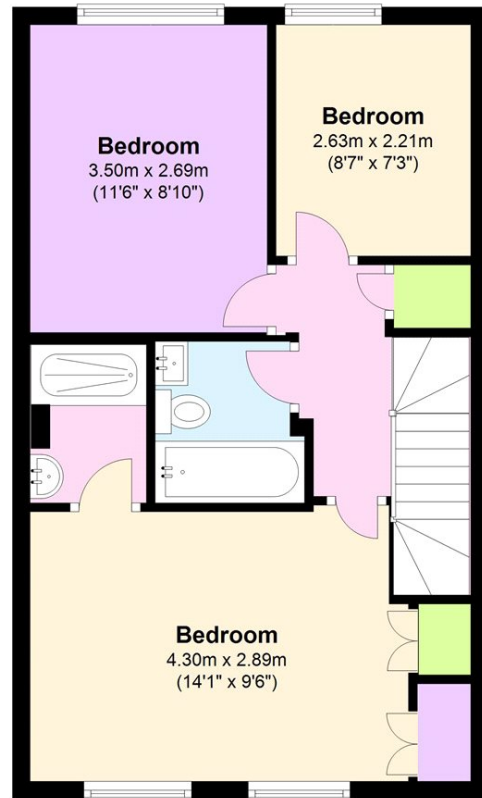
### Ground Floor

Approx. 41.1 sq. metres (442.8 sq. feet)



### First Floor

Approx. 41.2 sq. metres (443.5 sq. feet)



Total area: approx. 82.3 sq. metres (886.4 sq. feet)

This floorplan is for illustration purposes only and is not to scale. The position and size of doors, windows, appliances and other features are approximate.

Energy Efficiency Rating		Current	Potential
Very energy efficient - lower running costs			
(92+)	A		
(81-91)	B		
(69-80)	C		
(55-68)	D		
(39-54)	E		
(21-38)	F		
(1-20)	G		
Not energy efficient - higher running costs			
England, Scotland & Wales		72	83
EU Directive 2002/91/EC			

Deposit: £3,057.69

Holding Deposit:

Council Tax Band:

Where no figures are shown, we have been unable to ascertain the information. All figures that are shown were correct at the time of printing.