



EXCHANGE BUILDING, COMMERCIAL STREET, LONDON, E1  
OIEO £600,000 LEASEHOLD

## ICONIC ONE BED ART DECO CONVERSION IN THE HEART OF SPITALFIELDS

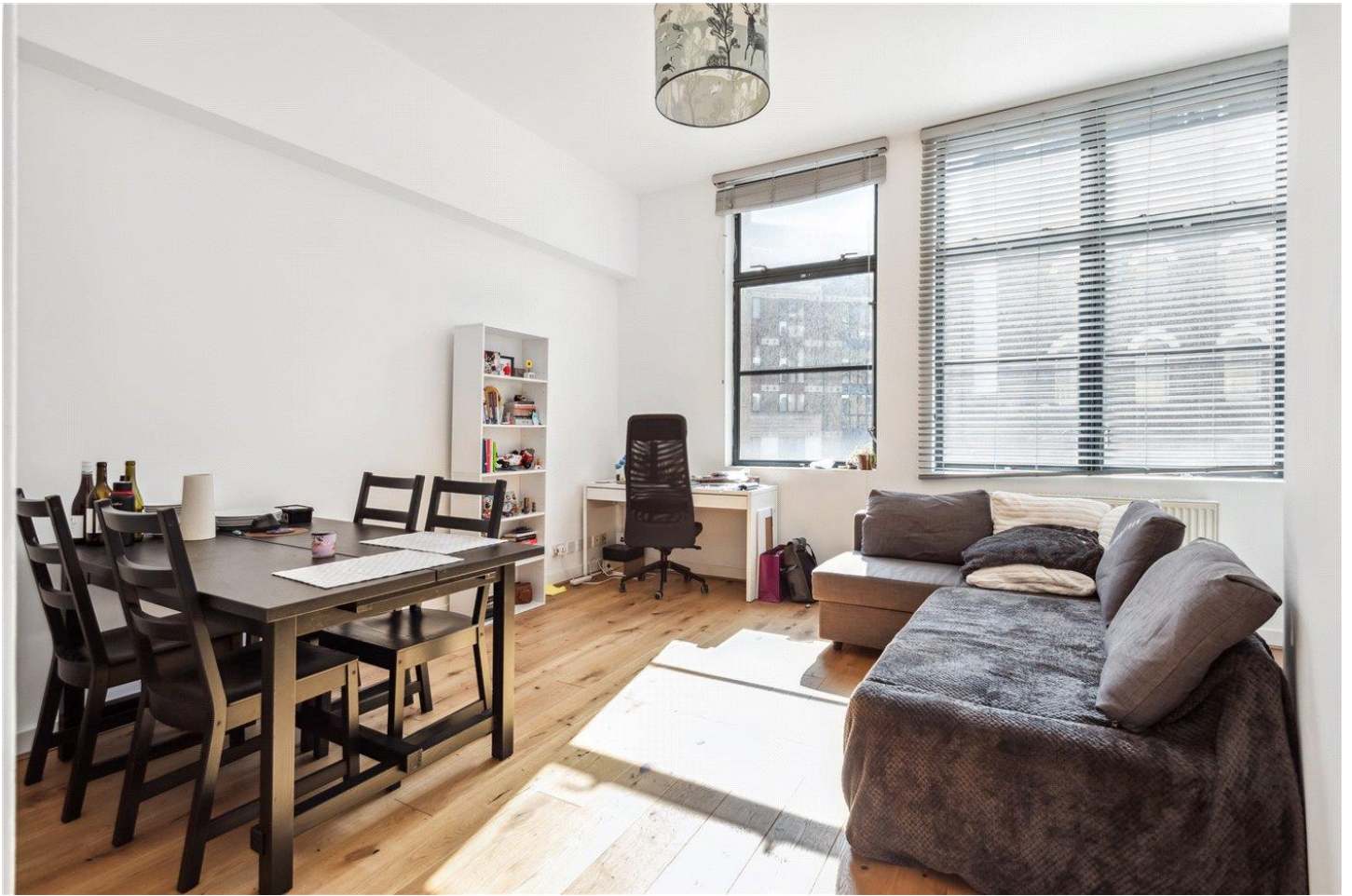
Shoreditch | 020 7749 7650 | [shoreditch@winkworth.co.uk](mailto:shoreditch@winkworth.co.uk)

**Winkworth**

[winkworth.co.uk](http://winkworth.co.uk)

See things differently





## DESCRIPTION:

Set within a sought-after Art Deco development in the vibrant heart of Spitalfields, this stylish one-bedroom apartment seamlessly blends character with contemporary comfort. Boasting distinctive curved walls, expansive west-facing windows, and a recently refurbished bathroom, the space is bathed in natural light and full of unique charm.

A generous hallway welcomes you with a large double cupboard, offering ample storage space. The bright reception room provides scope for creating an open-plan living area (subject to consent), while the separate kitchen comes fully equipped with integrated appliances.

Residents enjoy the convenience of a 24-hour concierge, lift access, and beautifully maintained communal gardens. The property also includes a secure underground parking space.

Ideally located just 0.2 miles from Shoreditch High Street Station and 0.5 miles from Liverpool Street Station.

Offered chain-free with vacant possession.

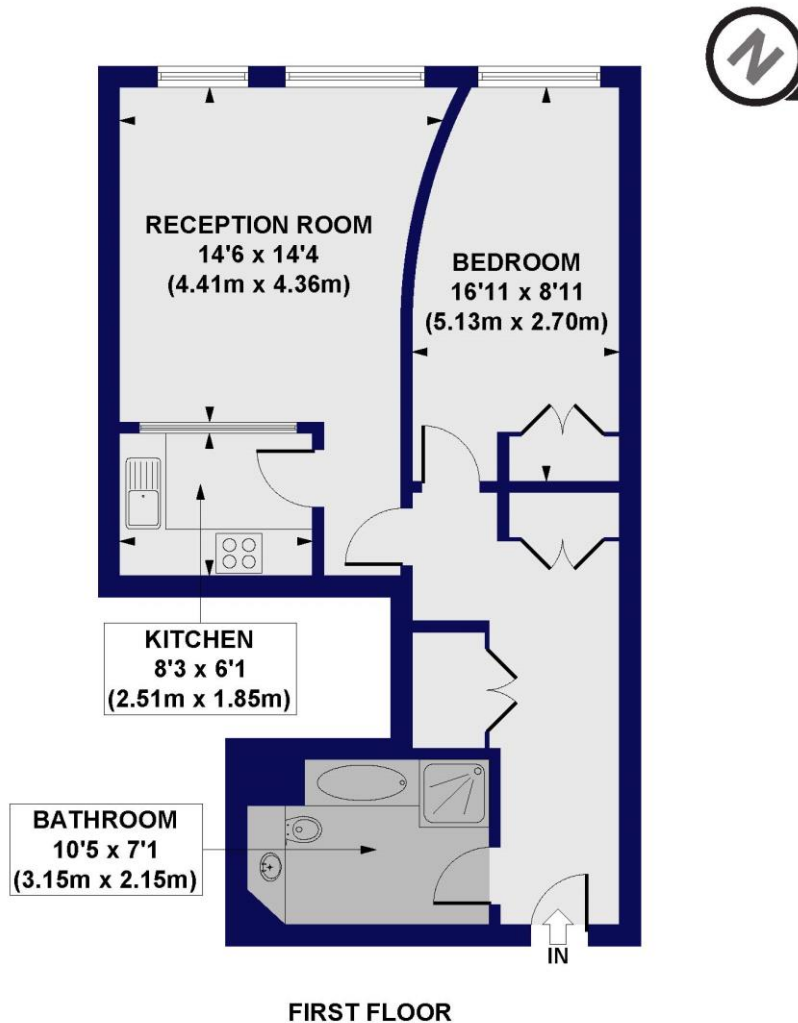
**Winkworth**



Winkworth



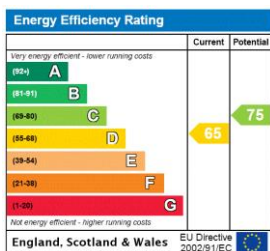
**Exchange Building, Commercial Street, E1**  
**Approx. Gross Internal Floor Area 628 sq. ft / 58.31 sq. m**



All measurements of walls, doors, windows, fittings and appliances, including their size and location, are shown as standard sizes and do not constitute any warranty or representation by the seller, their agent or CP Creative. Any intending purchaser must satisfy himself by inspection or otherwise as to the correctness of the information contained in these plans. This plan is for illustrative purposes only and should be used as such by any prospective purchasers.

**Winkworth**

This floorplan is for illustration purposes only and is not to scale. The position and size of doors, windows, appliances and other features are approximate.



Shoreditch | 020 7749 7650 | shoreditch@winkworth.co.uk

**Winkworth**

[winkworth.co.uk](http://winkworth.co.uk)

See things differently

Winkworth wishes to inform prospective buyers and tenants that these particulars are a guide and act as information only. All our details are given in good faith and believed to be correct at the time of printing but they don't form part of an offer or contract. No Winkworth employee has authority to make or give any representation or warranty in relation to this property. All fixtures and fittings, whether fitted or not are deemed removable by the vendor unless stated otherwise and room sizes are measured between internal wall surfaces, including furnishings.