



RED LION LANE, SHOOTERS HILL, LONDON, SE18 4LE
GUIDE PRICE £700,000-£750,000 FREEHOLD

AN IMPRESSIVE AND MUCH IMPROVED TWO BEDROOM (ORIGINALLY FOUR BEDROOM) FOUR STOREY VICTORIAN HOME WITH A HUGE AND OUTSTANDING LARGER THAN USUAL GARDEN, FOUND ON THIS POPULAR LANE VERY CLOSE TO OXLEAS WOODS

Blackheath | 0208 8520999 | blackheath@winkworth.co.uk





DESCRIPTION:

The accommodation briefly comprises; entrance to the raised ground floor with a beautiful dual aspect through reception room (these two rooms have potential to separate again and to form a third and even a fourth bedroom). Downstairs is a lovely country style kitchen with beamed ceiling, slate tiled floor and a separate and good-sized dining room and large storage room under the front steps. Upstairs is a very large master bedroom to the front and a stunning family bathroom with freestanding bath and separate double walk-in shower. Finally, there is a bedroom on the top floor (restricted head height in places) with eaves storage. The current vendors have extensively refurbished the house with features including; new roof, new electric, wood flooring, timber framed sash windows, corning, fireplaces, high ceilings and gas fired central heating.

The house forms part of a terrace called Elizabeth Cottages and not only benefits from superb views out to the rear across London, but it has a huge, L-shaped landscaped garden which extends across the back of the neighbouring garden. At its widest it extends to approx. 110ft x 60ft and includes large terrace, extensive lawn, mature shrubs and a great summer office/home office.

This is a wonderful and versatile home and your immediate viewing is recommended. Video and virtual tours can be seen at Winkworth.co.uk

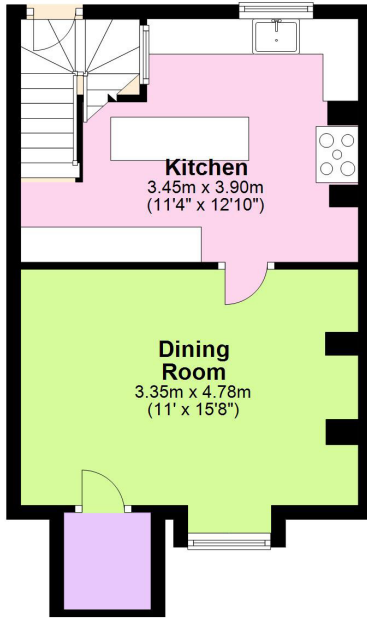
Red Lion Lane is a sought-after lane with a diverse mix of property styles from different time periods. There are ample bus links into Greenwich, Blackheath Village and Woolwich, so you can take advantage of the outstanding train links, bars, cafés, and shopping facilities. You are also surrounded by many green spaces including the historic Oxleas woods, Eaglesfield Recreation Ground and Shooters Hill golf course. The iconic Severndroog castle is only a short walk away so you can enjoy breathtaking views from one of the highest points in London and enjoy the popular tea rooms. Woolwich Arsenal station provides access to mainline rail, the DLR and the newly opened Elizabeth Line. There are three primary schools within walking distance, very good secondary schools in Greenwich borough and grammar schools in Bexley borough.





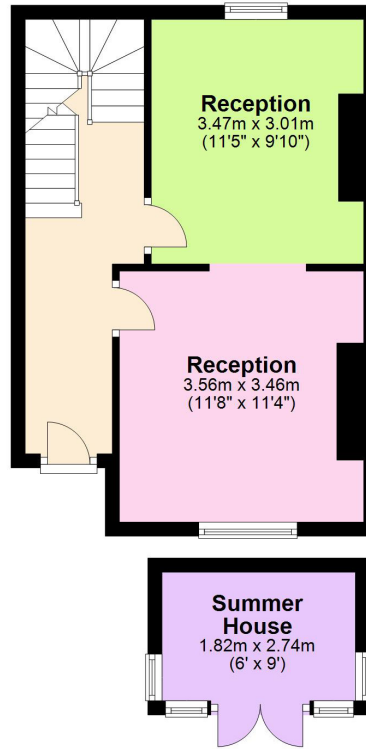
Basement

Approx. 35.3 sq. metres (380.4 sq. feet)



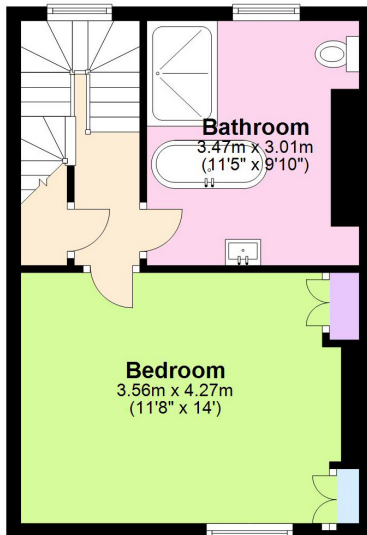
Ground Floor

Approx. 37.8 sq. metres (407.4 sq. feet)



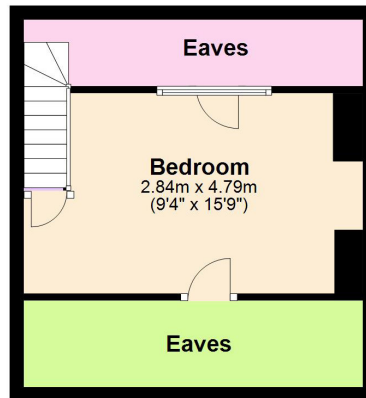
First Floor

Approx. 34.2 sq. metres (368.0 sq. feet)



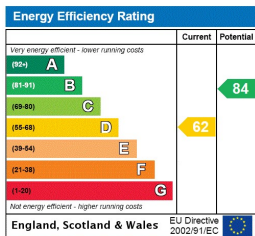
Second Floor

Approx. 25.0 sq. metres (268.7 sq. feet)



Total area: approx. 132.3 sq. metres (1424.5 sq. feet)

This floorplan is for illustration purposes only and is not to scale. The position and size of doors, windows, appliances and other features are approximate. Any lease and service charge details have been provided by the vendor. Any interest party should have these checked by a solicitor as part of the purchase process.



Blackheath | 0208 8520999 | blackheath@winkworth.co.uk

Winkworth

winkworth.co.uk

See things differently

Winkworth wishes to inform prospective buyers and tenants that these particulars are a guide and act as information only. All our details are given in good faith and believed to be correct at the time of printing but they don't form part of an offer or contract. No Winkworth employee has authority to make or give any representation or warranty in relation to this property. All fixtures and fittings, whether fitted or not are deemed removable by the vendor unless stated otherwise and room sizes are measured between internal wall surfaces, including furnishings.