



OXBERRY AVENUE, SW6
£485,000 LEASEHOLD

A beautifully presented, light and airy, one double bedroom, first floor flat in this well-maintained period building on one Fulham's favoured roads.

Fulham & Parsons Green | 020 7731 3388 | fulham@winkworth.co.uk

Winkworth

for every step...

winkworth.co.uk



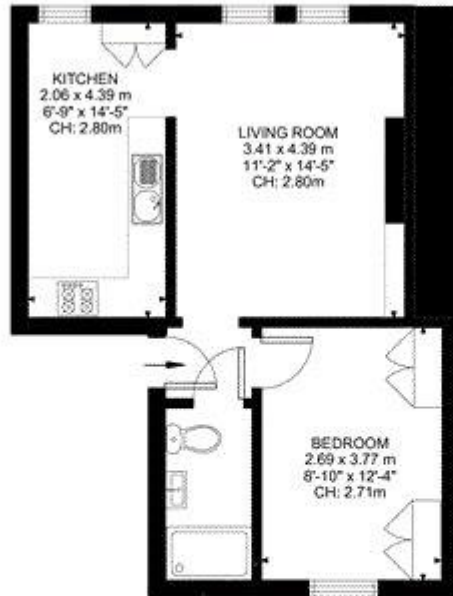
DESCRIPTION:

The kitchen and reception room share an open-plan layout, separated by a partial dividing wall. There is space for a dining table and there are three large sash windows allowing an abundance of natural light to flood the room. The double bedroom has built-in storage and is served by a modern bathroom.

Oxberry Avenue runs off the Fulham Road and is located very close to prime Parsons Green offering momentary access to the extensive choice of local shops, bars and restaurants lining both the Fulham Road and nearby New Kings Road. Nearby are a range of excellent public transport links including Parsons Green & Putney Bridge underground stations & an array of bus routes into the main shopping and entertainment districts, the West End and Central London. The green open spaces of Parsons Green itself, Hurlingham Park, Bishops Park and Fulham Palace are all within a short radius, as is the River Thames with its popular walk the Thames Path.







First Floor
441 ft²

Oxberry Avenue, SW6

Approximate Gross Internal Area
40.94 SQ.M / 441 SQ.FT

KEY: CH = Ceiling Height
Restricted Head Height

This floorplan is for illustration purposes only and is not to scale. The position and size of doors, windows, appliances and other features are approximate.

Tenure: Leasehold

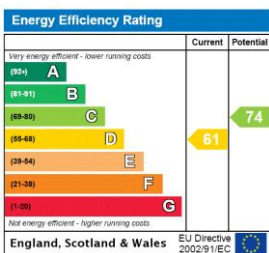
Term: 151 year and 0 months

Service Charge: £0 per annum

Ground Rent: £0 Annually (subject to increase)

Council Tax Band: D

Where no figures are shown, we have been unable to ascertain the information. All figures that are shown were correct at the time of printing.



Fulham & Parsons Green | 020 7731 3388 | fulham@winkworth.co.uk



for every step...

winkworth.co.uk

Winkworth wishes to inform prospective buyers and tenants that these particulars are a guide and act as information only. All our details are given in good faith and believed to be correct at the time of printing but they don't form part of an offer or contract. No Winkworth employee has authority to make or give any representation or warranty in relation to this property. All fixtures and fittings, whether fitted or not are deemed removable by the vendor unless stated otherwise and room sizes are measured between internal wall surfaces, including furnishings.