



Fleming Road, London, United Kingdom, SE17

£625,000 Freehold

A fantastic opportunity to acquire a quaint two-bedroom house in excellent order and close to transport links with the bonus of a residential parking spot. EPC rating C

Winkworth

LOCATION

Fleming Road is situated just off Cooks Road, east of Kennington Park and close to Kennington Underground Station (Northern Line) and various bus routes.

DESCRIPTION

As you enter the house there is a modern and well-equipped kitchen to your right. The space features a fan oven, a four-burner gas hob, a fitted dishwasher, a stainless-steel sink, and room for a freestanding washing machine.

Continuing through the property, the reception area is spacious, ideal for large furniture such as sofas and a T.V. set up. Double doors lead out to a low-maintenance garden, which is currently laid with decking, perfect for those with busy lifestyles who still want to enjoy the outdoors when they can.

Upstairs, you'll find the master bedroom, offering ample space for a king-size bed, additional bedroom furniture and a luxury fitted wardrobe.

The luxurious bathroom features a walk-in shower, a white sink and W.C., and a mirrored vanity cabinet.

Bedroom two is spacious and offers plenty of room for a double bed and freestanding storage.

Lastly the house comes with a parking space in a gated car park to the rear of the house.

PARKING

Private parking permit

UTILITIES

Electricity – mains

Gas – mains

Water – mains

Heating – gas central heating

Sewerage – mains

Broadband – superfast broadband

LOCAL AUTHORITY

Southwark Council

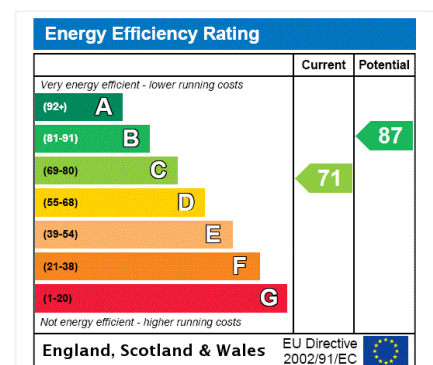
Council Tax Band D

TENURE

Freehold

DIRECTIONS

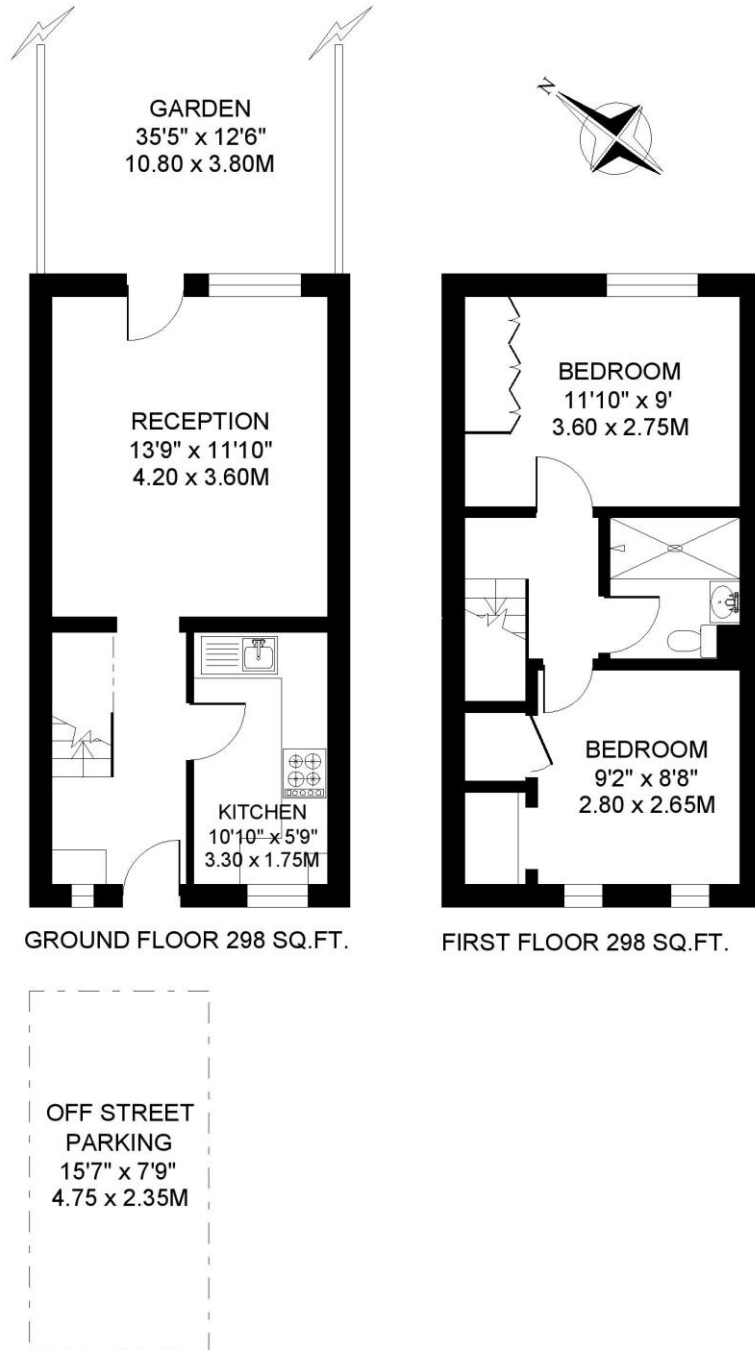
Kennington Underground Station (Northern Line) is approximately 0.4 miles away. Oval Underground Station (Northern Line) is approximately 0.6 miles away. The area is well served by a frequent bus service into Central London.





FLEMING ROAD. SE17
2 BEDROOM HOUSE

Approximate gross floor area
596 SQ.FT / 55.4 SQ.M.



This floorplan is for illustration purposes only and is not to scale. The position and size of doors, windows, appliances and other features are approximate. Copyright: These plans should not be reproduced by any other person, without permission. Floorplan produced for Winkworth by Floorplanners 07801 228850

Kennington | 020 7587 0600 | kennington@winkworth.co.uk