



HONISTER, READING, BERKSHIRE, RG1 7AH
£2,250 PER MONTH FURNISHED

**MODERN THREE BEDROOM TOWN CENTRE
APARTMENT LOCATED ON THE 2ND FLOOR,
AVAILABLE NOW.**

Reading | 0118 4022 300 | reading@winkworth.co.uk

Winkworth

for every step...

winkworth.co.uk



DESCRIPTION:

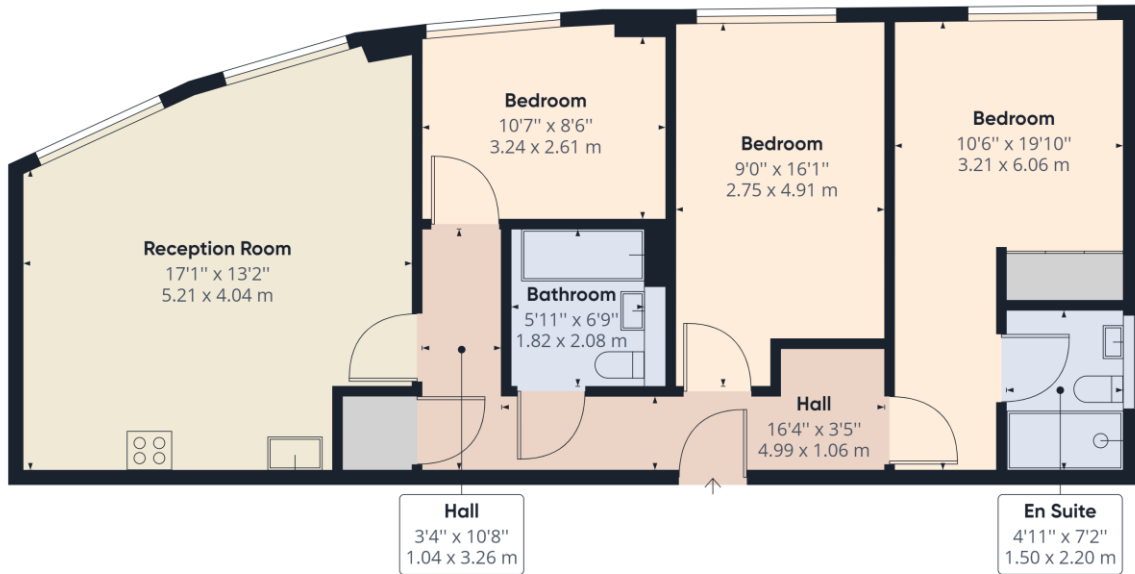
Modern three bedroom apartment located on the second floor of the Honister development in the town centre. The property comprises spacious living room with open plan kitchen benefitting from integrated appliances, three double bedrooms, master bedroom with an ensuite shower room and a modern three piece bathroom. Additional features include underfloor heating, spotlights throughout, secure undercroft parking space and the apartment is furnished to a high standard. Available Now.

AT A GLANCE

- Modern three bedroom apartment
- Town centre location
- Two bathrooms
- Allocated parking space
- Council Tax Band D
- Available Now
- Furnished







Approximate total area⁽¹⁾
871.66 ft²
80.98 m²

(1) Excluding balconies and terraces

While every attempt has been made to ensure accuracy, all measurements are approximate, not to scale. This floor plan is for illustrative purposes only.

GIRAFFE 360

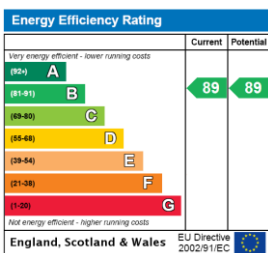
This floorplan is for illustration purposes only and is not to scale. The position and size of doors, windows, appliances and other features are approximate.

Deposit: £2,596.15

Holding Deposit: £519.23

Council Tax Band: D

Where no figures are shown, we have been unable to ascertain the information. All figures that are shown were correct at the time of printing.



Reading | 0118 4022 300 | reading@winkworth.co.uk

Winkworth

for every step...

winkworth.co.uk

Winkworth wishes to inform prospective buyers and tenants that these particulars are a guide and act as information only. All our details are given in good faith and believed to be correct at the time of printing but they don't form part of an offer or contract. No Winkworth employee has authority to make or give any representation or warranty in relation to this property. All fixtures and fittings, whether fitted or not are deemed removable by the vendor unless stated otherwise and room sizes are measured between internal wall surfaces, including furnishings.