



RIGELEY MEWS, NW10
OFFERS OVER £1,370,000 FREEHOLD

Winkworth



RIGELEY MEWS, NW10

An exceptional boutique five double bedroom modern mews house, configured over three floors, intelligently designed to a high specification throughout. The property further benefits from a private gated community, CCTV security, under floor heating, electric vehicle charging, private parking and cables prepared for AC.

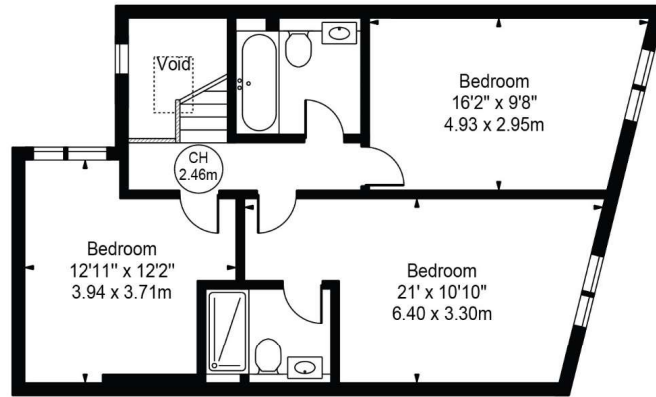
Rigeley Mews is a unique development access from Letchford Gardens, close to local amenities in Kensal Rise, Queen's Park, Notting Hill and Shepherd's Bush. Transport links include Kensal Green (Bakerloo & Overground) and Willesden Junction (Bakerloo & Overground), the newly developed Old Oak Common station, and multiple bus routes.



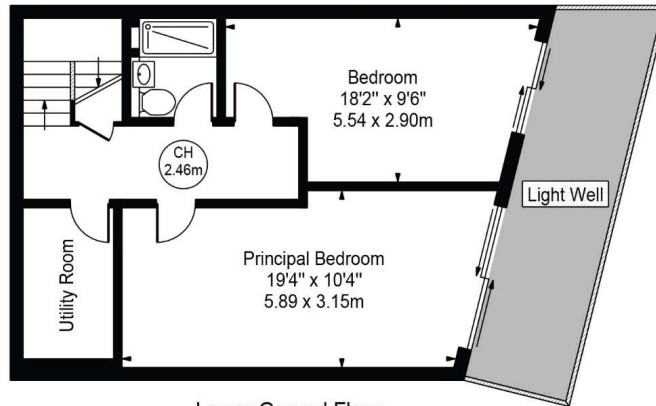


Rigeley Mews

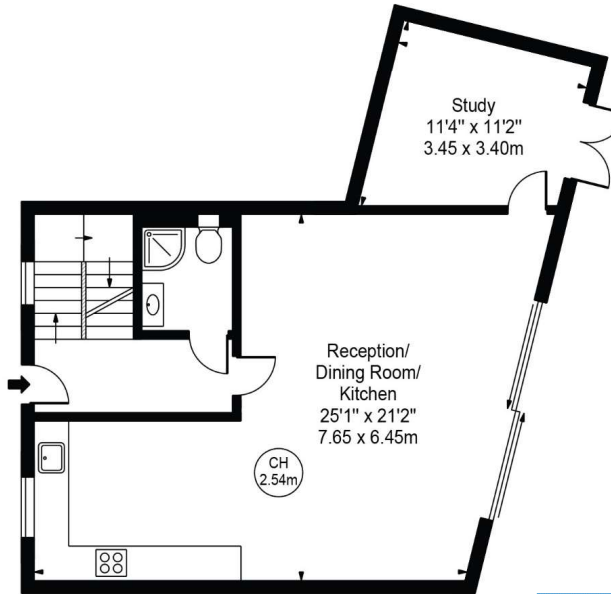
Approx. Gross Internal Area 1887 Sq Ft - 175.31 Sq M
(Excluding Void)



First Floor
(630 Sq Ft - 58.53 Sq M)



Lower Ground Floor
(554 Sq Ft - 51.47 Sq M)



Ground Floor
(703 Sq Ft - 65.31 Sq M)



For Illustration Purposes Only - Not To Scale

This floor plan should be used as a general outline for guidance only and does not constitute in whole or in part an offer or contract. Any intending purchaser or lessee should satisfy themselves by inspection, searches, enquiries and full survey as to the correctness of each statement. Any areas, measurements or distances quoted are approximate and should not be used to value a property or be the basis of any sale or let.

Copyright Morriarti Photography & Design LTD

Energy Efficiency Rating		Current	Potential
Very energy efficient - lower running costs			
(92-)	A		94
(81-91)	B	86	
(69-80)	C		
(55-68)	D		
(39-54)	E		
(21-38)	F		
(1-20)	G		
Not energy efficient - higher running costs			
England, Scotland & Wales		EU Directive 2002/91/EC	

North Kensington | 020 7792 5000 | northkensington@winkworth.co.uk

winkworth.co.uk

Winkworth wishes to inform prospective buyers and tenants that these particulars are a guide and act as information only. All our details are given in good faith and believed to be correct at the time of printing but they don't form part of an offer or contract. No Winkworth employee has authority to make or give any representation or warranty in relation to this property. All fixtures and fittings, whether fitted or not are deemed removable by the vendor unless stated otherwise and room sizes are measured between internal wall surfaces, including furnishings.

