



Rita Road, London, SW8

£425,000 Leasehold

An opportunity to purchase this light one-bedroom ground floor flat with a garden in a Victorian period conversion, close to Vauxhall station and park. Perfect for someone who wants to put their own stamp on a property. EPC rating C

LOCATION

Rita Road is located off both Fentiman & Meadow Road and is conveniently placed for a short stroll to Oval or Vauxhall Station/Bus Station or even perhaps Little Portugal, for a bite to eat.

DESCRIPTION

Walking into the property and to your right you have the living room, this space is benefits from a large bay window which lets in lots of natural light, once renovated, this will be a lovely space to space relax. There is plenty of room for a large sofa, coffee table and some free-standing furniture.

The bedroom is to the left, this can easily fit a double bed along with a wardrobe and bedside table, this room also has a large window facing the back garden.

Towards the back of the flat you have the large eat/in kitchen, with ample space for storage, worktops and utilities.

Next to the kitchen you have the bathroom which can easily fit a shower in bath, sink and W/C

The flat also benefits from a cellar and a good-sized private garden.

SERVICE CHARGE, GROUND RENT, COUNCIL TAX

Service Charge - £640 per annum (building insurance)

Ground Rent - £50 per annum

Council Tax band - C

UTILITIES

Electricity – mains connected

Gas – mains connected

Water – mains connected

Heating – mains connected

Sewerage – mains connected

Broadband - ultra fast

LOCAL AUTHORITY

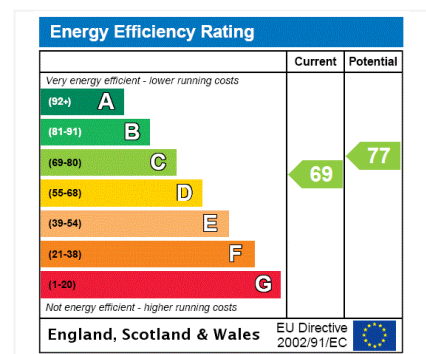
Lambeth

TENURE

Leasehold - 999 years from 25 December 1979

DIRECTIONS

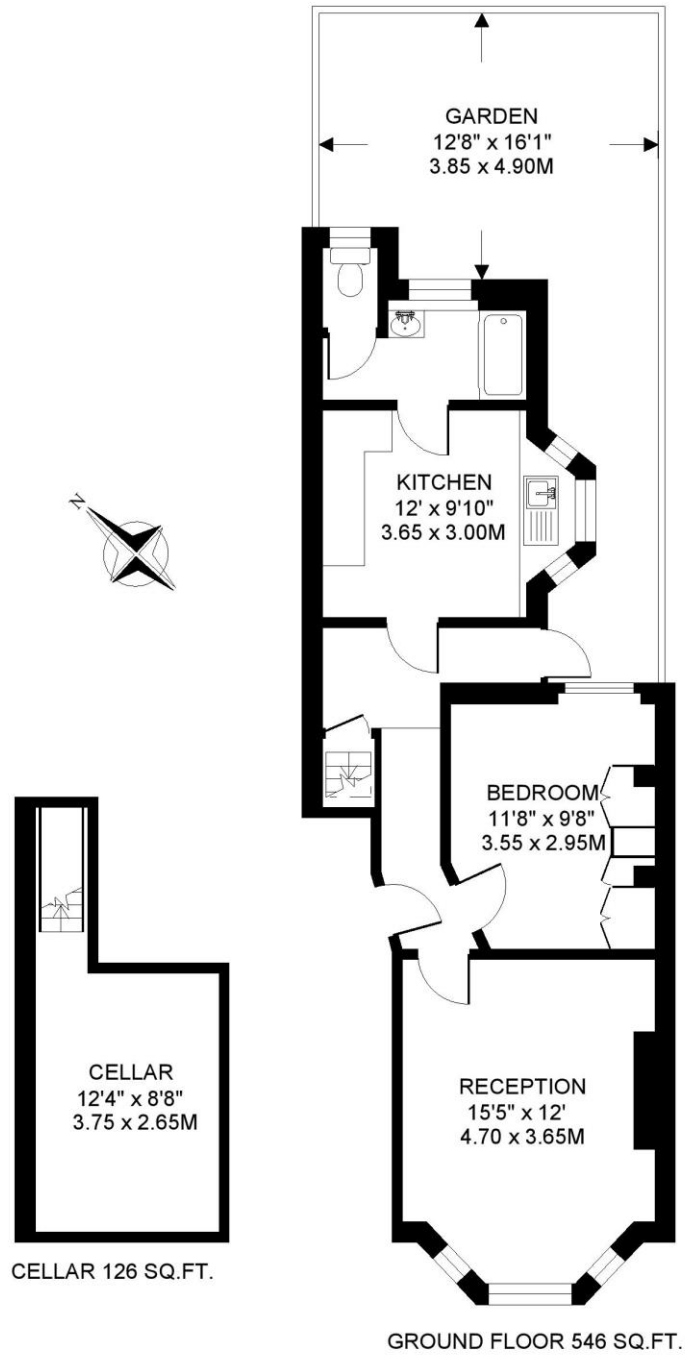
Rita Road is approximately 0.5 miles from Oval Underground Station (Northern & Victoria Line) and is 0.5 miles from Vauxhall Underground Station (BR & Victoria Line), with overground trains travelling in and out of the capital.





RITA ROAD. SW8
1 BEDROOM FLAT

Approximate gross floor area
672 SQ.FT / 62.4 SQ.M.



This floorplan is for illustration purposes only and is not to scale. The position and size of doors, windows, appliances and other features are approximate. Copyright: These plans should not be reproduced by any other person, without permission. Floorplan produced for Winkworth by Floorplanners 07801 228850

Kennington | 020 7587 0600 | kennington@winkworth.co.uk