



HIGHBURY GROVE, LONDON, N5
£700,000 LEASEHOLD

CHARMING 2 BEDROOM PERIOD CONVERSION WITH PRIVATE OUTSIDE SPACE IN PRIME HIGHBURY

Highbury | 0207 989 7000 | highbury@winkworth.co.uk

Winkworth



DESCRIPTION:

This stunning two-bedroom apartment is set on the lower floors of this charming, converted Victorian building, positioned moments from the ever popular Highbury Barn. The property boasts well proportioned rooms with direct access to a beautifully landscaped patio, perfect for outdoor entertaining. Refurbished to an exceptional standard, this apartment offers a wealth of features, including ample storage, expansive worktop space, original wooden floors, and bespoke bifold doors that seamlessly blend indoor and outdoor living spaces. The property is completed with a contemporary modern bathroom.

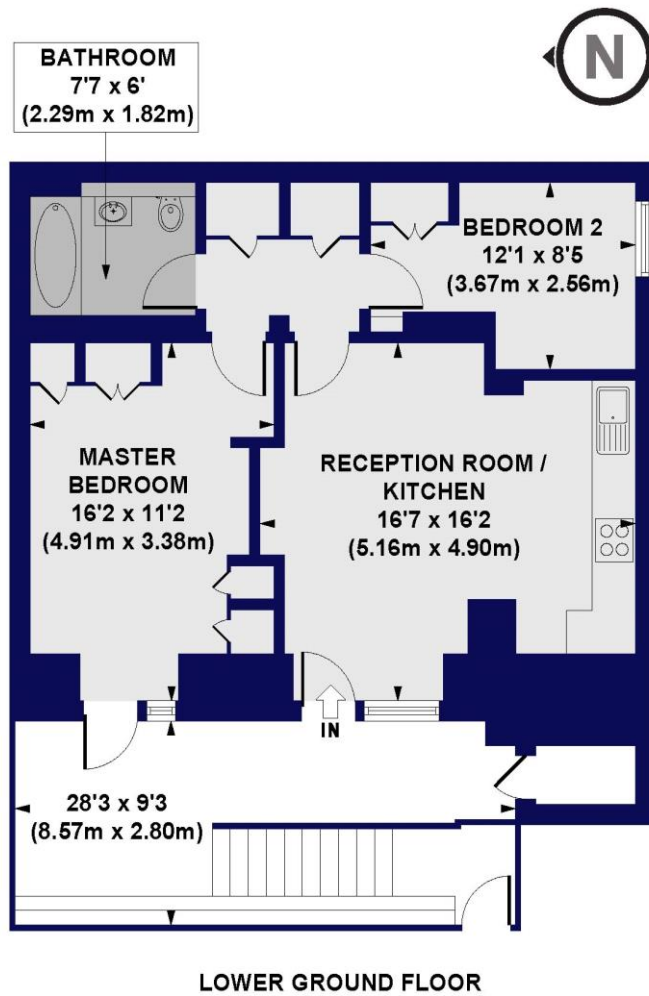
The property is located directly opposite Highbury Fields within seconds of the local delicatessens and cafes on Highbury Barn, such as Godfreys butchers, La Fromagerie, Bourne's Fishmongers and Highbury Vintners, all of which are hugely popular with locals as well as drawing those from further afield. Highbury & Islington tube station (Victorian Line & Overground) is 0.5 miles away while Arsenal tube station (Piccadilly Line) is also a short distance. A convenient bus stop is situated directly outside the property allowing for ease of access into The City and the West End.

Winkworth



Winkworth

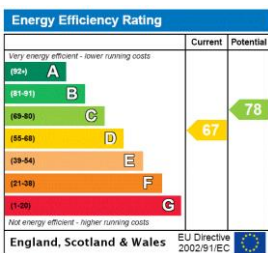
Highbury Grove, N5
 Approx. Gross Internal Floor Area 608 sq. ft / 56.51 sq. m



All measurements of walls, doors, windows, fittings and appliances, including their size and location, are shown as standard sizes and do not constitute any warranty or representation by the seller, their agent or CP Creative. Any intending purchaser must satisfy himself by inspection or otherwise as to the correctness of the information contained in these plans. This plan is for illustrative purposes only and should be used as such by any prospective purchasers.

Winkworth

This floorplan is for illustration purposes only and is not to scale. The position and size of doors, windows, appliances and other features are approximate.



Highbury | 0207 989 7000 | highbury@winkworth.co.uk



winkworth.co.uk

See things differently

Winkworth wishes to inform prospective buyers and tenants that these particulars are a guide and act as information only. All our details are given in good faith and believed to be correct at the time of printing but they don't form part of an offer or contract. No Winkworth employee has authority to make or give any representation or warranty in relation to this property. All fixtures and fittings, whether fitted or not are deemed removable by the vendor unless stated otherwise and room sizes are measured between internal wall surfaces, including furnishings.