



## ORMONDE TERRACE, ST JOHN'S WOOD, LONDON, NW8 £600,000 LEASEHOLD

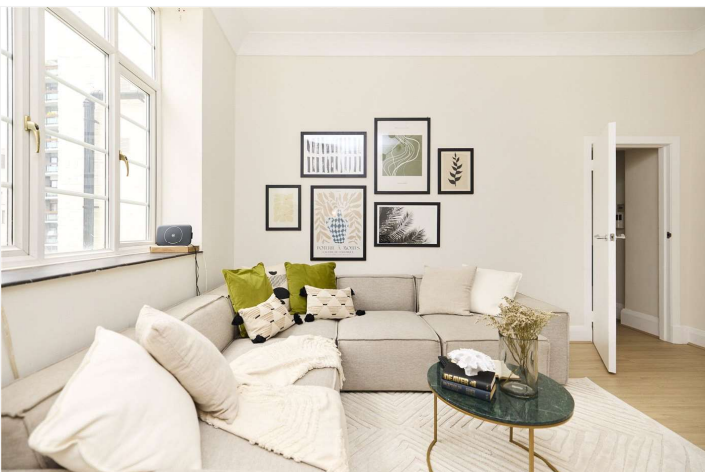
We are pleased to present this spacious one bedroom apartment, directly opposite Primrose Hill and Regent's Park. The property is in good decorative order throughout and further benefits from 2.8m ceiling heights, a separate kitchen and fitted floor-to-ceiling wardrobes in the bedroom. This peaceful setting is less than 200 metres from London Zoo and less than half a mile away from both St John's Wood High Street and Underground Station (Jubilee Line).

One Bedroom | Bathroom | Reception Room | Separate Kitchen | Lift Access | Leasehold

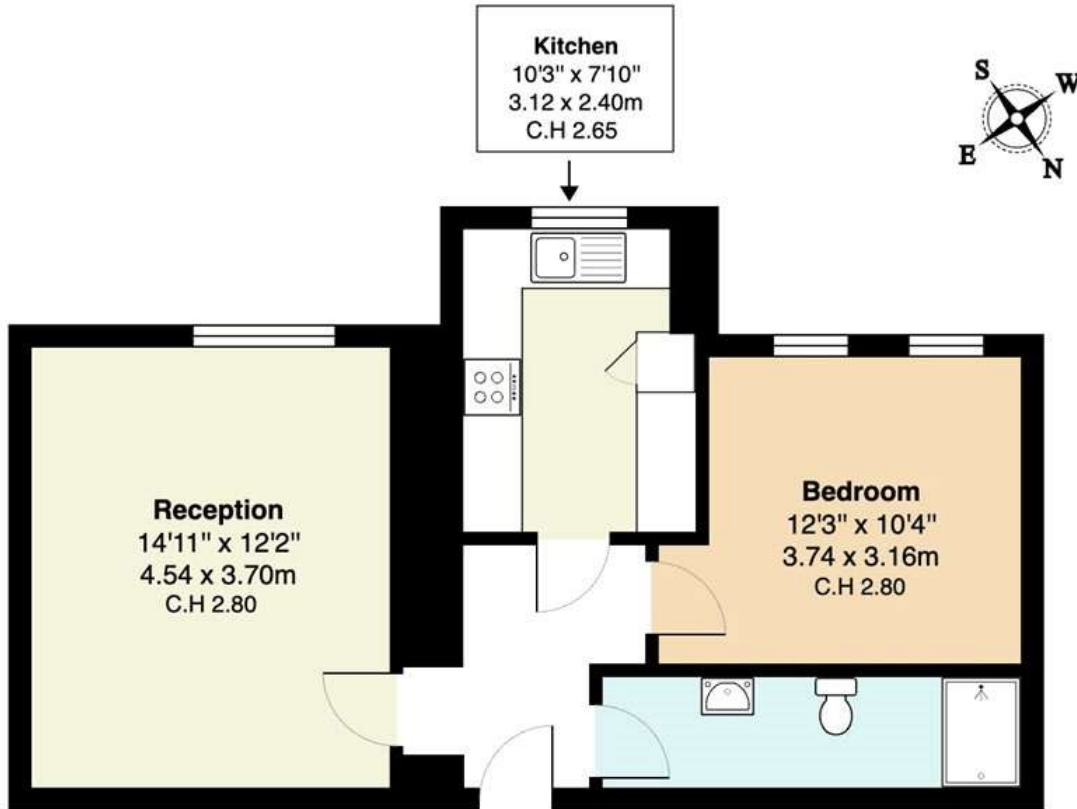
**Winkworth**

for every step...

[winkworth.co.uk/st-johns-wood](https://www.winkworth.co.uk/st-johns-wood)







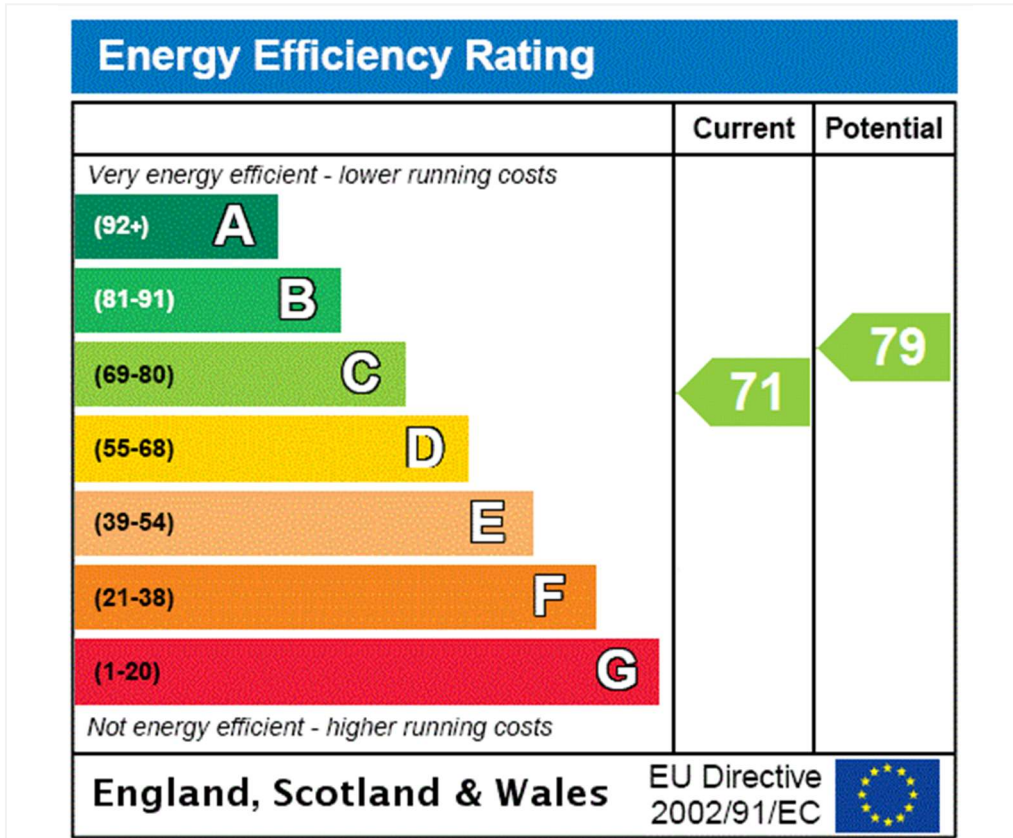
**2nd Floor**

**Ormonde Terrace NW8**

Total Gross Area: 531 ft<sup>2</sup> ... 49.3 m<sup>2</sup>

C.H : Ceiling Height

All measurements are approximate and for identification guideline purposes only, not to scale.  
Compliant with the RICS code of measuring practice



**Tenure:** Leasehold

**Term:** Expires - 25/12/2985

**Service Charge:** £7,423.74 per annum

**Ground Rent:** £1 Annually (subject to increase)

**Council Tax Band:** D

Where no figures are shown, we have been unable to ascertain the information. All figures that are shown were correct at the time of printing.

Where no figures are shown, we have been unable to ascertain the information. All figures that are shown were correct at the time of printing. These particulars are not an offer or contract, nor part of one. You should not rely on statements by Winkworth in the particulars or by word of mouth or in writing "information" as being factually accurate about the property, its condition or its value. Winkworth does not have any authority to make any representations about the property, and accordingly any information given is entirely without responsibility on the part of the agents, seller(s) or lessor(s). These particulars are prepared on the basis of the information supplied by our client and are a rough guide for information only. The photographs show only certain parts of the property. We are not able to check all of the information and therefore are unable to guarantee accuracy. All interested parties are therefore advised to undertake all necessary inspections and checks that they deem appropriate. Where displayed, the square footage is taken from the floor plans, which are created by an independent supplier. These measurements are approximate and included for illustrative purposes only. The measurements may vary. Winkworth does not make any representation as to the accuracy of these measurements and you should seek to verify them for yourself. Winkworth accept no liability for any loss you may suffer if you rely on these measurements. All fixtures and fittings, whether fitted or not are deemed removable by the vendor unless stated. Any reference to alterations to, or use of, any part of the property does not mean that any necessary planning, building regulations or other consent has been obtained. Amenities and appliances have not been tested

St John's Wood | 103-104 St. Johns Wood Terrace, London, NW8 6PL | 020 7586 7001 |



for every step...

[winkworth.co.uk/st-johns-wood](http://winkworth.co.uk/st-johns-wood)

Winkworth wishes to inform prospective buyers and tenants that these particulars are a guide and act as information only. All our details are given in good faith and believed to be correct at the time of printing but they don't form part of an offer or contract. No Winkworth employee has authority to make or give any representation or warranty in relation to this property. All fixtures and fittings, whether fitted or not are deemed removable by the vendor unless stated otherwise and room sizes are measured between internal wall surfaces, including furnishings.