



ROBESON WAY, HERTFORDSHIRE, WD6  
**£650,000 FREEHOLD**

## CHAIN FREE THREE BEDROOM END OF TERRACE HOUSE

Borehamwood | 020 8953 8899 | borehamwood@winkworth.co.uk



## DESCRIPTION:

Located in a highly desirable part of Borehamwood is this end of terrace family house. The property comprises a large lounge/diner, kitchen/breakfast room and guest WC to the ground floor and three bedrooms and family bathroom to the first floor. In addition there is an integral garage and off street parking to the front and a private garden to the rear. This house is being sold chain free.

Robeson Way is found on the highly sought after Studio Way development and has become increasingly popular with young families due to its proximity to central Borehamwood with its wide range of shops, amenities and schools. The closest rail access to Central London is from Elstree & Borehamwood Station as well as being in close proximity to the A1 which provides routes North but also to other parts of London via the M25. Viewing comes highly recommended.

## AT A GLANCE

- 3 Bedrooms
- Lounge/Diner
- Kitchen
- Guest Wc
- Bathroom
- Off Street Parking & Garage
- Private Garden





Approximate Gross Internal Area  
(Including Garage)  
102.4 sq m / 1102 sq ft

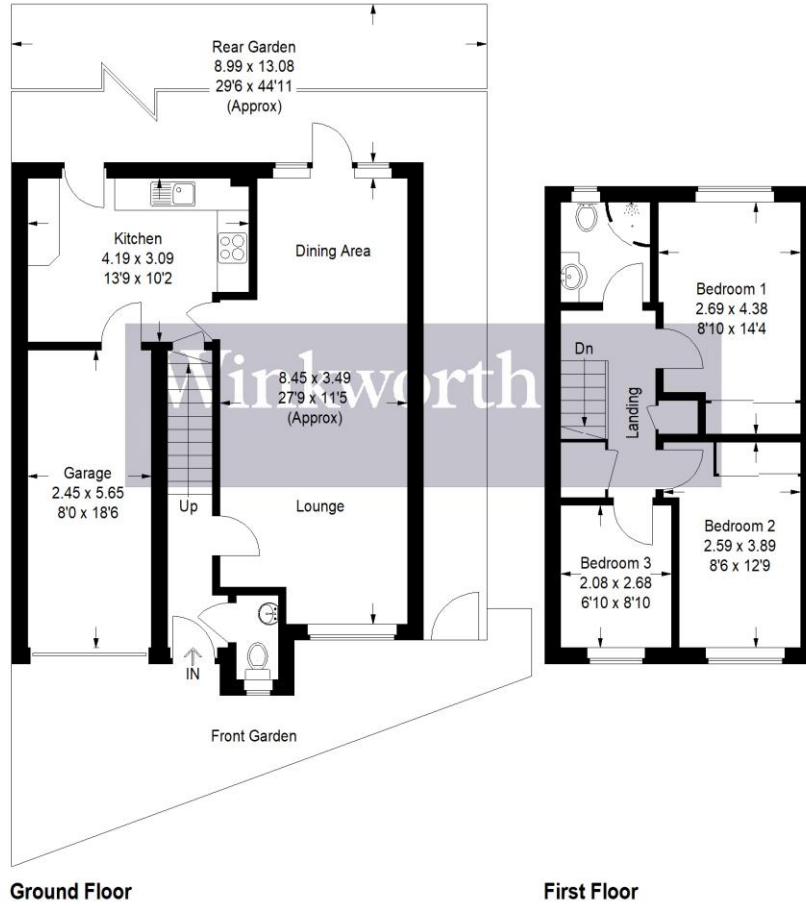
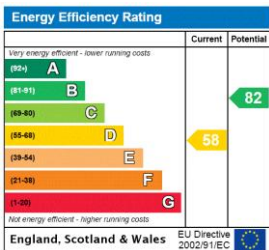


Illustration for identification purposes only, measurements are approximate, not to scale. Winkworth © 2025 (1175758)

This floorplan is for illustration purposes only and is not to scale. The position and size of doors, windows, appliances and other features are approximate.



**Tenure:** Freehold

**Term:** 0 year and 0 months

**Service Charge:** £0 per annum

**Ground Rent:** £ 0 Annually (subject to increase)

**Council Tax Band:** E

Where no figures are shown, we have been unable to ascertain the information. All figures that are shown were correct at the time of printing.