



**QUEEN ALEXANDRA MANSIONS, HASTINGS STREET, WC1H  
£499,950 SHARE OF FREEHOLD**

**A VERY ATTRACTIVE 1-BEDROOM ( 4TH FLOOR ) FLAT IN A POPULAR  
RED BRICK MANSION BLOCK IN NORTH BLOOMSBURY ON HASTINGS  
STREET.**

Leasehold: approx. 959 years remaining plus share of freehold | Service charges: approx. £2,900.14 per annum | Ground Rent: NIL | Council Tax: Band D, £2,011 per annum.

West End | 020 7240 3322 | westend@winkworth.co.uk

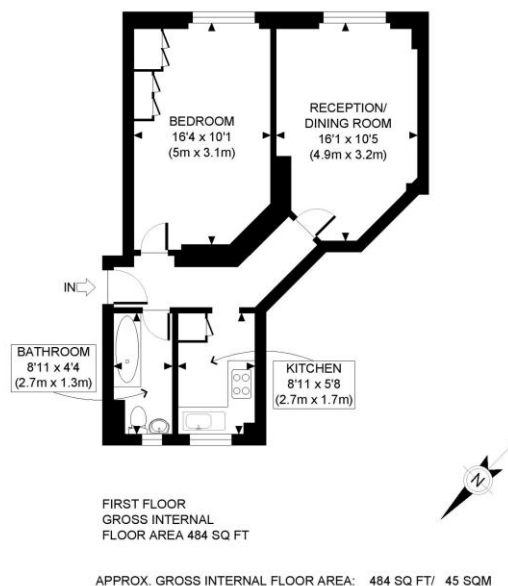
**Winkworth**

for every step...

*winkworth.co.uk*

## DESCRIPTION:

The flat has good width and has been looked after and kept very well. The flat has excellent light throughout. There is an onsite Caretaker. Queen Alexander Mansions is very central to Kings Cross Euston and the Brunswick Centre. The area has quite a few public parks and close to the Universities of LSE, UCL and Kings.

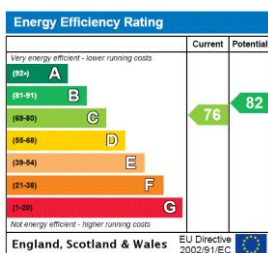


Winkworth

This plan is for illustrative purposes only and should be used as such by any prospective client. Whilst every attempt has been made to ensure the accuracy of the Floor Plan contained here, measurements of the doors, windows, rooms and any other items are approximate and no responsibility is taken for any errors, omissions, or misstatement. The services, systems and appliances shown have not been tested and no guarantee as to the operability or efficiency can be given.

PROPERTY PHOTO PLANS

This floorplan is for illustration purposes only and is not to scale. The position and size of doors, windows, appliances and other features are approximate.



**Tenure:** Leasehold

**Term:** 959 year and 11 months

**Service Charge:** £2900.14 per annum

**Ground Rent:** NIL

**Council Tax Band:** D

Where no figures are shown, we have been unable to ascertain the information. All figures that are shown were correct at the time of printing.

West End | 020 7240 3322 | westend@winkworth.co.uk

Winkworth

for every step...

winkworth.co.uk

Winkworth wishes to inform prospective buyers and tenants that these particulars are a guide and act as information only. All our details are given in good faith and believed to be correct at the time of printing but they don't form part of an offer or contract. No Winkworth employee has authority to make or give any representation or warranty in relation to this property. All fixtures and fittings, whether fitted or not are deemed removable by the vendor unless stated otherwise and room sizes are measured between internal wall surfaces, including furnishings.