



PARK AVENUE MEWS, CR4  
£335,000 FREEHOLD

## A SPLIT LEVEL ONE DOUBLE BEDROOM APARTMENT.

Tooting | 020 8767 5221 | tooting@winkworth.co.uk

**Winkworth**

for every step...

[winkworth.co.uk](http://winkworth.co.uk)



## DESCRIPTION:

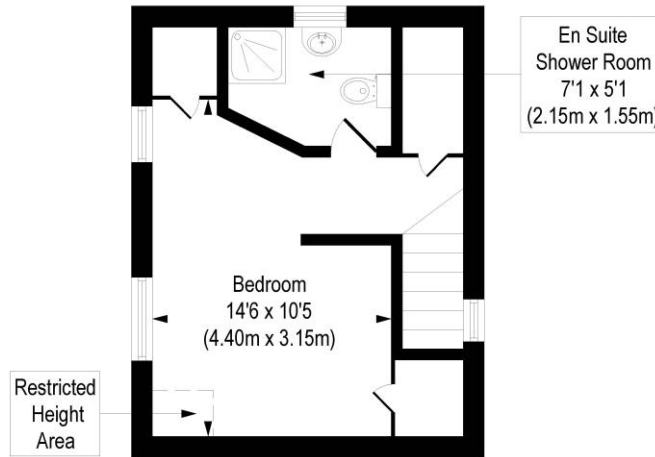
This bright and beautifully presented split-level apartment features one spacious double bedroom. The ground floor offers an open-plan modern kitchen and reception room, along with a handy under-stair storage cupboard. Upstairs, the double bedroom includes a contemporary ensuite shower room and two built-in storage cupboards.

Located in Park Avenue Mews, Mitcham (CR4), this quiet residential area is known for its modern, mews-style homes. It offers a peaceful suburban atmosphere with easy access to green spaces like Mitcham Common. Mitcham Eastfields station (0.9miles) and Streatham Common station (1.0miles) are also nearby, providing fast rail links to Central London. Local amenities, shops, and recreational facilities are close at hand, making the area popular with families and professionals seeking a balance of suburban comfort and city convenience.

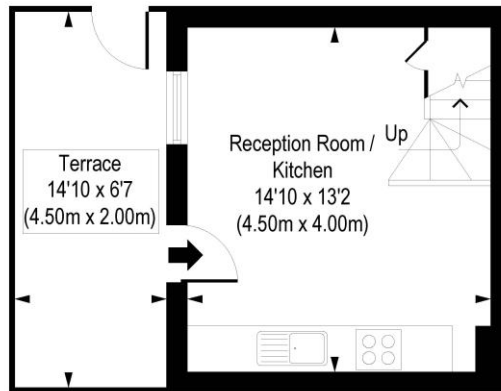


# Park Avenue Mews, CR4

Approx. Gross Internal Floor Area 430 sq. ft / 39.92 sq. m (Including Restricted Height Area)  
 Approx. Gross Internal Floor Area 425 sq. ft / 39.44 sq. m (Excluding Restricted Height Area)



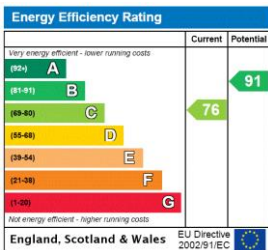
First Floor  
 Gross Internal  
 Floor Area 236 sq ft



Ground Floor  
 Gross Internal  
 Floor Area 194 sq ft

COMPLIANT WITH RICS CODE OF MEASURING PRACTICE. Floorplan is for illustrative purposes only and is not to scale. Every attempt has been made to ensure the accuracy of the floorplan shown, however all measurements, fixtures, fittings and data shown are an approximate interpretation for illustrative purposes only. Liability for errors, omissions or mis-statement through negligence or otherwise is hereby excluded.

This floorplan is for illustration purposes only and is not to scale. The position and size of doors, windows, appliances and other features are approximate.



for every step...

Tooting | 020 8767 5221 | tooting@winkworth.co.uk

winkworth.co.uk

Winkworth wishes to inform prospective buyers and tenants that these particulars are a guide and act as information only. All our details are given in good faith and believed to be correct at the time of printing but they don't form part of an offer or contract. No Winkworth employee has authority to make or give any representation or warranty in relation to this property. All fixtures and fittings, whether fitted or not are deemed removable by the vendor unless stated otherwise and room sizes are measured between internal wall surfaces, including furnishings.