



53 Pembroke Road

Muswell Hill, London, N10 2HX

Freehold development opportunity for multiple family homes.

0.32 Acres
(0.13 Hectares)

- Freehold development site.
- Planning Permission:
Implemented for 3 x three-
bedroom houses (GIA: 300
sq.m / 3,229 sq.ft).
- Existing House: Gross Internal
Area (GIA) of 197.88 sq.m
(2,130 sq.ft), with potential for
refurbishment or conversion to
an HMO or flats (subject to
planning permission).
- Affluent North London area.

53 Pembroke Road, Muswell Hill, London, N10 2HX

Summary

Available Size	0.32 Acres
Price	£2,200,000 Guide Price
EPC Rating	D (64)

Description

The property includes a large 9-bedroom house, gardens, a greenhouse, and a separate brick-built workshop/storage building, all on a 0.32-acre site. It has access from both Pembroke Road and Hampden Road.

Planning permission has been granted and implemented for the "demolition of the existing building and the erection of three two-story houses with associated car parking and landscaping" on the portion known as "land to the rear of Hampden Court." Relevant documents, including the Certificate of Lawful Use and CIL payment receipt of £6,198.58, confirm the planning under references 15/02182/FUL and 17/5028/S73 and are available for download on our website.

The main house at 53 Pembroke Road is a mid-terrace home with a rear garden adjoining the rear Hampden Court land. This substantial property spans ground, first, and second floors. A driveway with a dropped curb provides direct access to Pembroke Road. The house would benefit from a complete refurbishment and also offers potential for conversion into an HMO or self contained flats, subject to necessary consents.

Location

The property is located on the west side of Pembroke Road, between Hampden Road and Roman Road, in the northern part of Muswell Hill, near Friern Barnet. This affluent North London suburb is about 6.5 miles north of Central London.

Muswell Hill and Friern Barnet offer a wide range of shopping and leisure options, including Marks & Spencer, WH Smiths, Sainsbury's, Boots, Oliver Bonas, B&Q, PC World, Costa Coffee, HSBC, Pure Gym, Pizza Express, along with many independent shops, restaurants, bars, and pubs.

Transport links are excellent, with Southgate Rail Station to the north and Bounds Green Underground Station on the Piccadilly Line to the east, offering easy access to Central London in approximately 25 minutes.

Terms

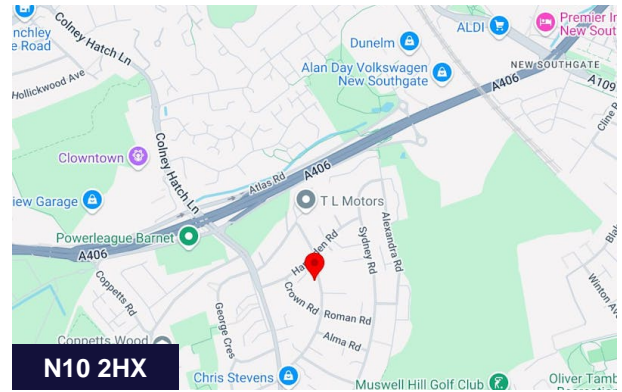
LEGAL TITLE & TENURE: The Freehold Title is as follows:-

53 Pembroke Road (Title Number NGL404135). This will be sold with full vacant possession on completion of the legal formalities.

SERVICES: It is our understanding that mains water, electricity, gas and drainage are provided. However, it is the responsibility of the purchaser to ensure that services are available and adequate for any proposed development.

VAT: To be confirmed.

VIEWINGS: The property may be inspected internally strictly through prior appointment. Prospective purchasers should be aware that inspections are made entirely at their own risk and no liability is accepted by the vendor or their agent.



Viewing & Further Information



Adam Stackhouse

07889 510036 | 020 7355 0285
astackhouse@winkworth.co.uk



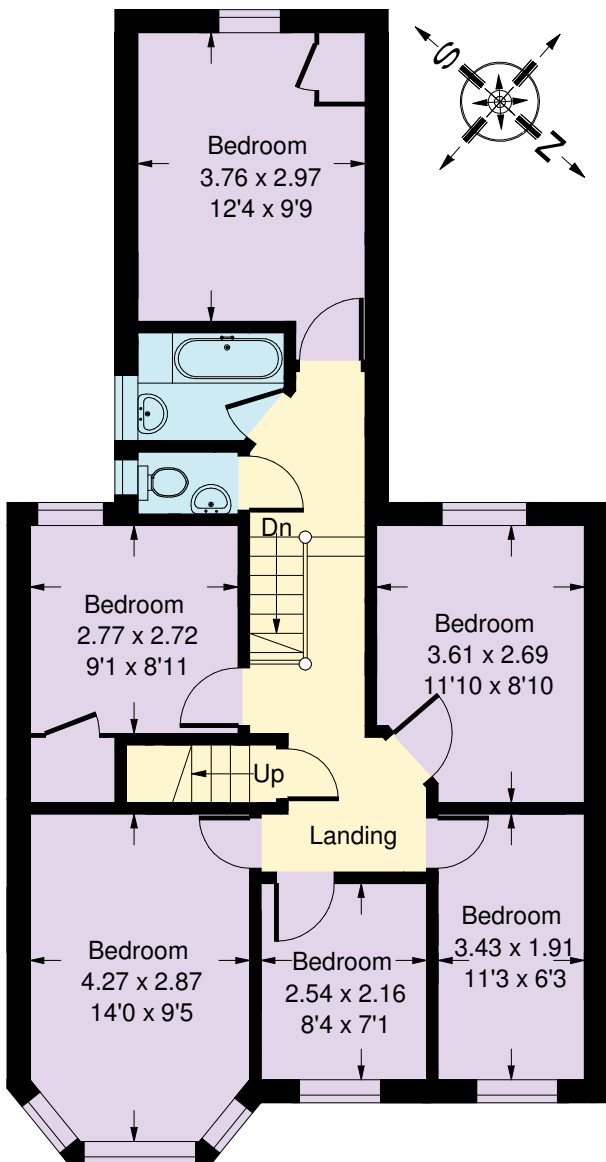
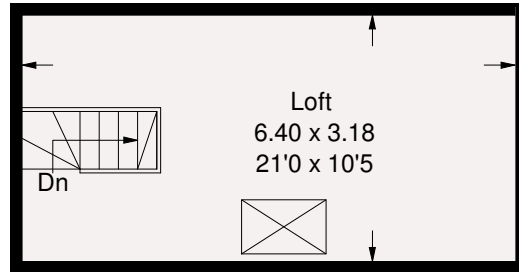
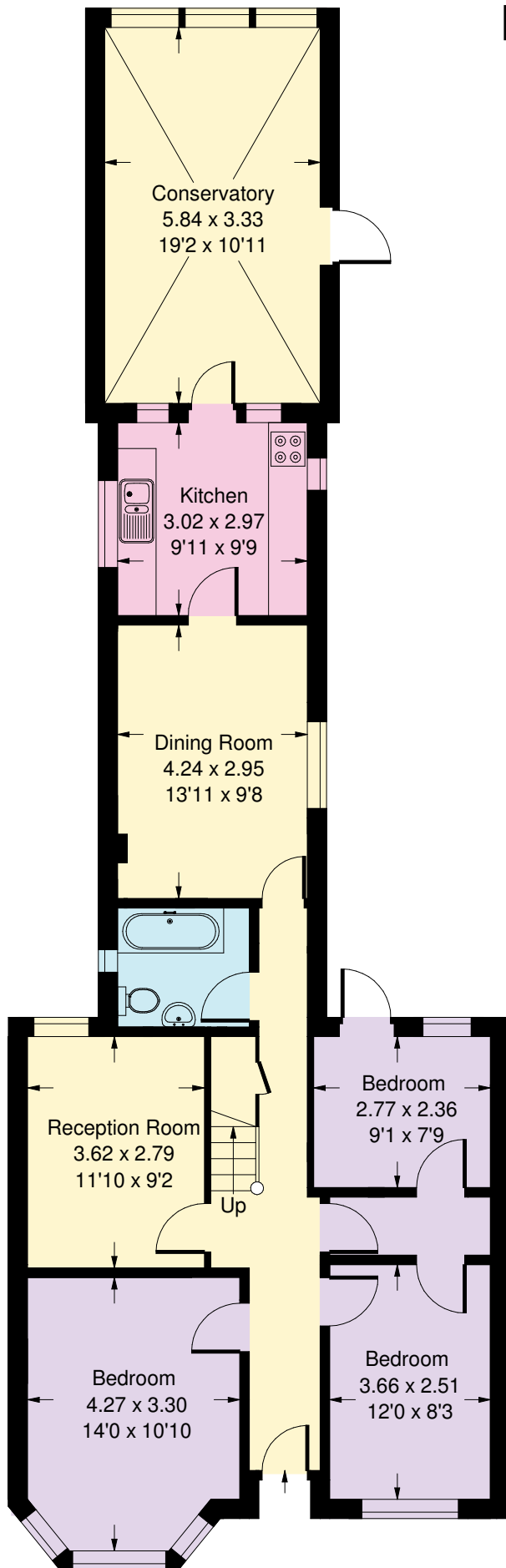
Chris Ryan

07385 413368 | 020 7355 0285
cryan@winkworth.co.uk

The above information contained within this email is sent subject to contract. These particulars are for general information only and do not constitute any part of an offer or contract. All statements contained therein are made without responsibility on the part of the vendors or lessors and are not to be relied upon as statement or representation of fact. Intending purchasers or lessees must satisfy themselves, by inspection, or otherwise, as to the correctness of each of the statements of dimensions contained in these particulars. Generated on 20/12/2024

Pembroke Road, N10

Approx. Gross Internal Area
197.8 sq m / 2130 sq ft
(Including loft)



Ground Floor

First Floor

Whilst every attempt has been made to ensure the accuracy of the floor plan, measurements are approximate and not to scale. No guarantee is given on the total square footage of the property quoted on the plan. Figures given are for guidance. Plan is for illustration purposes only, not to be used for valuations.