



Churchill Gardens, UK, SW1V

£2,300 PER MONTH

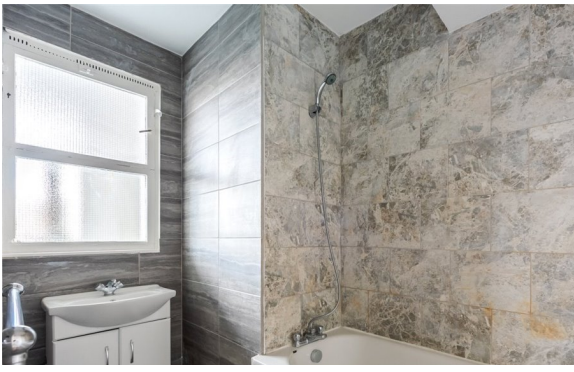
UNFURNISHED

AT A GLANCE

- Hot Water and Heating Included
- Two Double Bedrooms
- Large Reception
- Kitchen / Breakfast Room
- Private Balcony

Winkworth

for every step...



| Energy Efficiency Rating | | Current | Potential |
|---------------------------------------------|----------|-------------------------|-----------|
| Very energy efficient - lower running costs | | | |
| (92-100) | A | | |
| (81-91) | B | | |
| (69-80) | C | 69 | 76 |
| (55-68) | D | | |
| (39-54) | E | | |
| (21-38) | F | | |
| (1-20) | G | | |
| Not energy efficient - higher running costs | | | |
| England, Scotland & Wales | | EU Directive 2002/91/EC | |

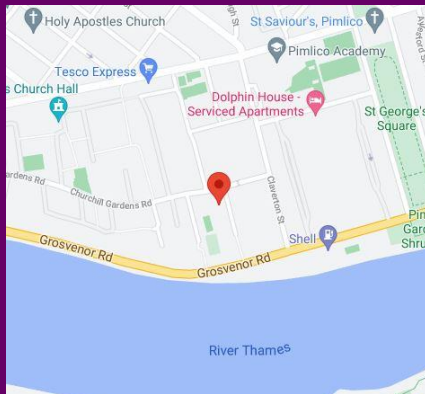
CHURCHILL GARDENS, UK, SW1V

£2,300 PER MONTH
UNFURNISHED

A well presented, two double bedroom flat located in this well maintained purpose built block on the edge of the popular Churchill Gardens. The property boasts wonderful views towards the River Thames and Battersea Power Station.

Accommodation comprises a large bright reception room, modern fitted kitchen, two double bedrooms with storage, family bathroom and separate W.C. To the rear of the property there is a generous private balcony which is perfect al fresco dining.

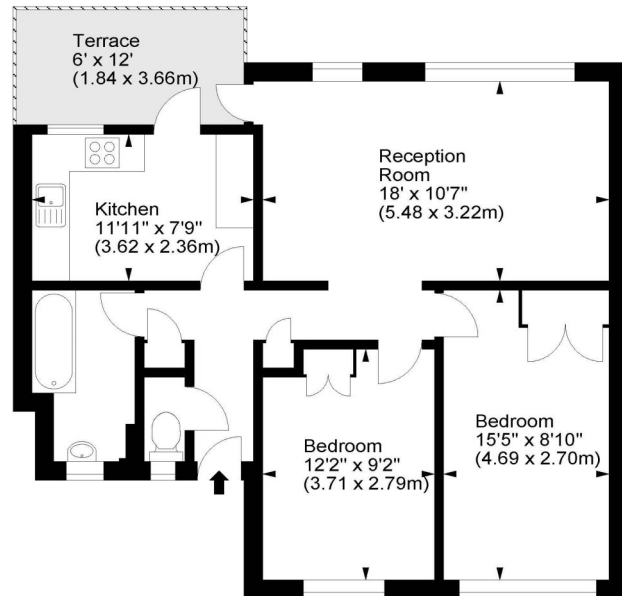
Situated within moments of the superb selection of local shops, cafes and restaurants on Lupus Street, the 'Moreton Triangle' and Wilton Road. The extensive collection of retail outlets and theatres at nearby Victoria are also within walking distance as are the green open spaces of St George's Square and Battersea Park.



winkworth wishes to inform prospective buyers and tenants that these particulars are a guide and act as information only. All our details are given in good faith and believed to be correct at the time of printing but they don't form part of an offer or contract. No winkworth employee has authority to make or give any representation or warranty in relation to this property. All fixtures and fittings, whether fitted or not are deemed removable by the vendor unless stated otherwise and room sizes are measured between internal wall surfaces, including fire doors.

Keats House, SW1

Approx. Gross Internal Area
684 Sq Ft - 63.54 Sq M



Fifth Floor

For illustration purposes only. Not to scale.
All measurements are taken and shown at floor level.
www.r3photography.co.uk © Photography / Floor Plans / Lease Plans / EPCs



Pimlico & Westminster | 020 7828 1786 |
pimlico@winkworth.co.uk

winkworth.co.uk/pimlico

Winkworth

for every step...