



LEIGH HOUSE, HALCROW STREET, E1
£320 PER WEEK FURNISHED

A ONE BEDROOM THIRD FLOOR APARTMENT BETWEEN SHADWELL DLR AND WHITECHAPEL STATION.

Shoreditch | 020 7749 7650 | shoreditch@winkworth.co.uk

Winkworth

Tenant Fees Apply: Details of fees for tenant referencing, tenancy agreement admin fees and renewal fees are available on the Winkworth website and the link can be found with the displayed rent for the property. Tenants should ensure they are fully conversant with these upfront fees and other costs that are involved at the outset of the tenancy before making an offer to rent and your local Winkworth office will provide written details upon request.

winkworth.co.uk

See things differently



DESCRIPTION:

A distinctive, spacious one bedroom apartment in this sought after enclave of Whitechapel by Ford Square and convenient for both the DLR at Shadwell as well as the East London Line and underground at Whitechapel. This lovely apartment has a spacious double bedroom, large reception room, modern kitchen, modern bathroom and extra fitted storage space.

Whitechapel tube station is just minutes away and the city is also within easy reach being less than half a mile away from the property.

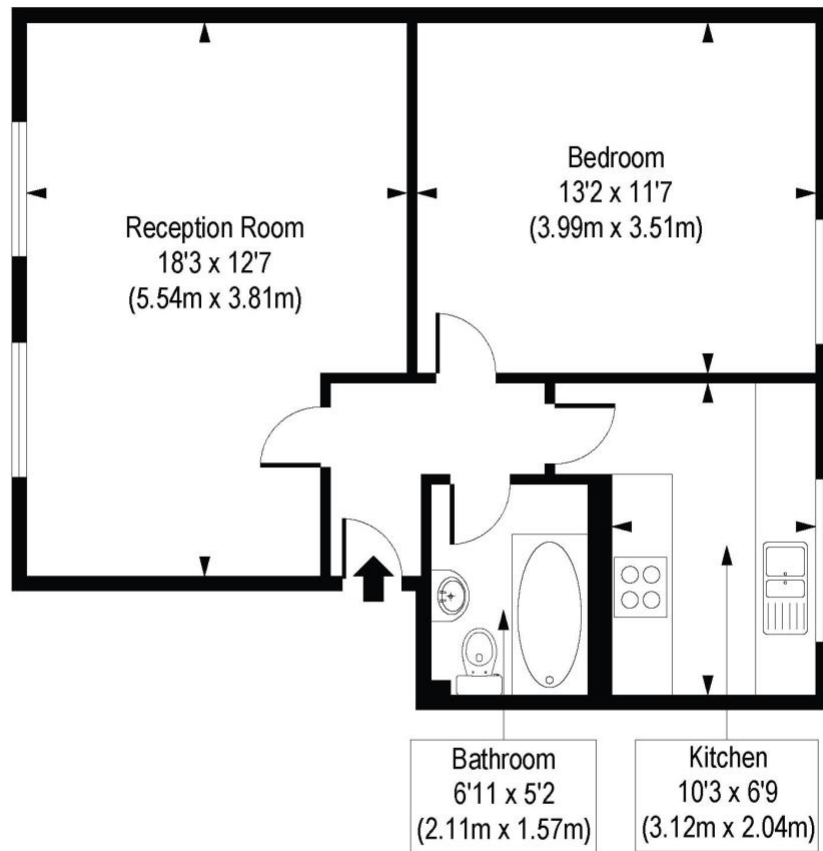
Winkworth



Winkworth

Halcrow Street, E1

Approx. Gross Internal Area 520 sq. ft / 48.34 sq. m



Third Floor

COMPLIANT WITH RICS CODE OF MEASURING PRACTICE. Floorplan is for illustrative purposes only and is not to scale. Every attempt has been made to ensure the accuracy of the floorplan shown, however all measurements, fixtures, fittings and data shown are an approximate interpretation for illustrative purposes only. Liability for errors, omissions or mis-statement through negligence or otherwise is hereby excluded.

This floorplan is for illustration purposes only and is not to scale. The position and size of doors, windows, appliances and other features are approximate.

Shoreditch | 020 7749 7650 | shoreditch@winkworth.co.uk

Winkworth

winkworth.co.uk

See things differently

Winkworth wishes to inform prospective buyers and tenants that these particulars are a guide and act as information only. All our details are given in good faith and believed to be correct at the time of printing but they don't form part of an offer or contract. No Winkworth employee has authority to make or give any representation or warranty in relation to this property. All fixtures and fittings, whether fitted or not are deemed removable by the vendor unless stated otherwise and room sizes are measured between internal wall surfaces, including furnishings.