



FFF 2, 40 ENNISMORE AVENUE, LONDON, W4
£1,650 PER MONTH FURNISHED

LOVELY TWO BED APARTMENT TO RENT ON PRETTY ROAD IN CHISWICK

SUMMARY:

Spacious and well-presented two bedroom apartment in pretty period conversion in Chiswick. This lovely first-floor apartment comprises light, good-size reception, separate kitchen and two double bedrooms. Located on a quiet street just off the Chiswick High Road, close to all the shops and cafes and both Turnham Green and Stamford Brook tube stations. Available Mid August. Furnished.

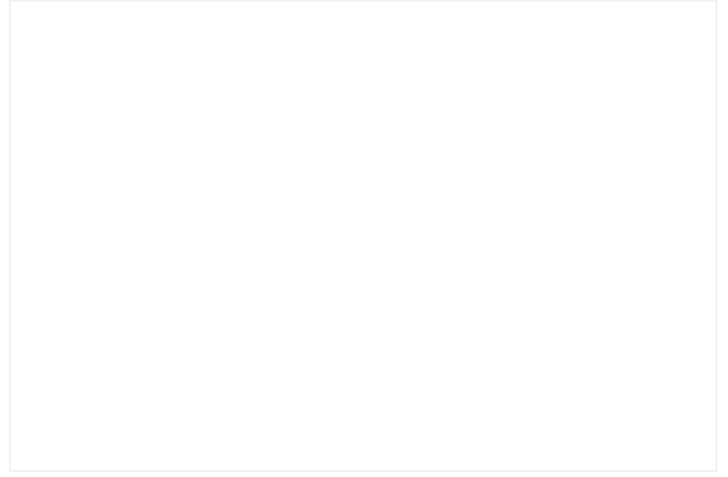
AT A GLANCE

- Two Double Bedrooms
- Reception Room
- Kitchen
- Bathroom
- Furnished
- Council Tax Band E
- Available August
- Fees Apply

Chiswick | 020 8994 7096 | chiswick@winkworth.co.uk

Winkworth





ACCOMMODATION

Two Bedrooms

Reception Room

Kitchen

Bathroom

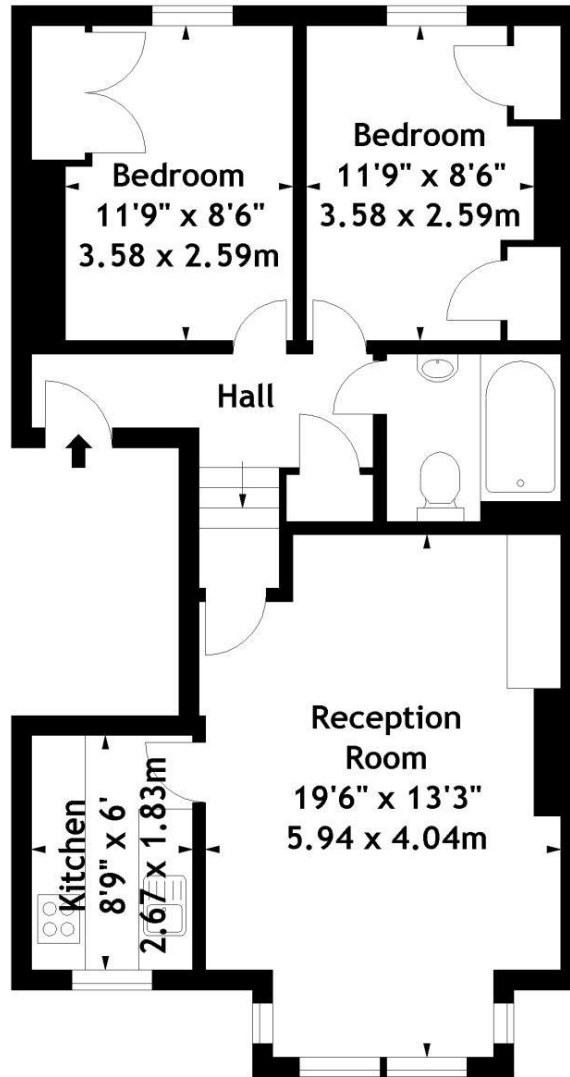
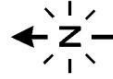
Furnished

Council Tax Band E

EPC Rating Band D

Available 3rd July

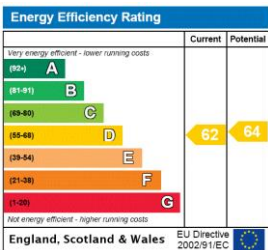
Ennismore Avenue, W4
 Approx. Gross Internal Area
 651 Sq Ft - 60.48 Sq M



First Floor

Measured in accordance with RICS guidelines. Every attempt is made to ensure accuracy, however all measurements are approximate. This floor plan is for illustrative purposes only and is not to scale. © Luke Casserly Photography 2011

This floorplan is for illustration purposes only and is not to scale. The position and size of doors, windows, appliances and other features are approximate.



Chiswick | 020 8994 7096 | chiswick@winkworth.co.uk



winkworth.co.uk

See things differently

Winkworth wishes to inform prospective buyers and tenants that these particulars are a guide and act as information only. All our details are given in good faith and believed to be correct at the time of printing but they don't form part of an offer or contract. No Winkworth employee has authority to make or give any representation or warranty in relation to this property. All fixtures and fittings, whether fitted or not are deemed removable by the vendor unless stated otherwise and room sizes are measured between internal wall surfaces, including furnishings.