



MILNER SQUARE, ANGEL, N1
£790 PER WEEK FURNISHED

**A STUNNING THREE DOUBLE BEDROOM APARTMENT
IS IN EXCELLENT CONDITION AND A PRIME
LOCATION**

Shoreditch | 020 7749 7650 | shoreditch@winkworth.co.uk

Winkworth

Tenant Fees Apply: Details of fees for tenant referencing, tenancy agreement admin fees and renewal fees are available on the Winkworth website and the link can be found with the displayed rent for the property. Tenants should ensure they are fully conversant with these upfront fees and other costs that are involved at the outset of the tenancy before making an offer to rent and your local Winkworth office will provide written details upon request.

winkworth.co.uk

See things differently



DESCRIPTION:

Set on one of Islington's most desirable square's, this newly refurbished three bedroom apartment is in excellent condition and a prime location. The property offers a stunning living space bathed in natural light, and is split over two levels and comprises; a large open plan kitchen/ living area, three large double bedrooms, one en-suite, and a further bathroom. Boasting a wonderfully central location in Barnsbury, one of Islington's most desirable neighbourhoods with quiet residential streets the apartment is close to Upper Street and all the fashionable shops, restaurants and bars it offers. The nearest stations are Angel (Northern Line) and Highbury and Islington (Victoria line, National Rail and North London Overground Line). Furnished.

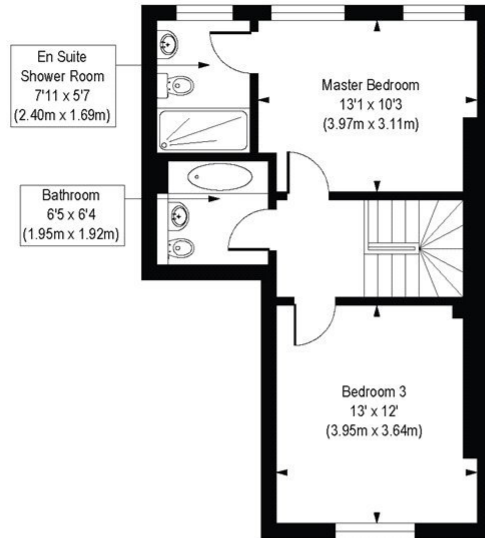
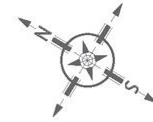
Winkworth



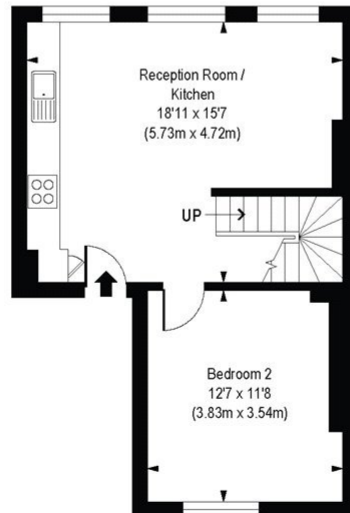
Winkworth

Milner Square, N1

Approx. Gross Internal Floor Area 904 sq. ft / 83.94 sq. m



First Floor
Gross Internal
Floor Area 461 sq ft



Ground Floor
Gross Internal
Floor Area 443 sq ft

COMPLIANT WITH RICS CODE OF MEASURING PRACTICE. Floorplan is for illustrative purposes only and is not to scale. Every attempt has been made to ensure the accuracy of the floorplan shown, however all measurements, fixtures, fittings and data shown are an approximate interpretation for illustrative purposes only. Liability for errors, omissions or mis-statement through negligence or otherwise is hereby excluded.

This floorplan is for illustration purposes only and is not to scale. The position and size of doors, windows, appliances and other features are approximate.

Shoreditch | 020 7749 7650 | shoreditch@winkworth.co.uk

Winkworth

winkworth.co.uk

See things differently

Winkworth wishes to inform prospective buyers and tenants that these particulars are a guide and act as information only. All our details are given in good faith and believed to be correct at the time of printing but they don't form part of an offer or contract. No Winkworth employee has authority to make or give any representation or warranty in relation to this property. All fixtures and fittings, whether fitted or not are deemed removable by the vendor unless stated otherwise and room sizes are measured between internal wall surfaces, including furnishings.