

BRITTEN HOUSE | SW3



Winkworth

Britten House SW3

RENT: £519pw / £2,249.00pcm

- Studio Flat
- Second Floor (with lift)
- Concierge Service
- Furnished

LOCAL AUTHORITY: Royal Borough of Kensington & Chelsea

COUNCIL TAX BAND: Band D



| Energy Efficiency Rating | | |
|---|----------------------------|-----------|
| | Current | Potential |
| Very energy efficient - lower running costs | | |
| (92+) A | | |
| (81-91) B | | |
| (69-80) C | 71 | 80 |
| (55-68) D | | |
| (39-54) E | | |
| (21-38) F | | |
| (1-20) G | | |
| Not energy efficient - higher running costs | | |
| England, Scotland & Wales | EU Directive 2002/91/EC | |

Knightsbridge & Chelsea | 020 7589 6616
knightsbridge@winkworth.co.uk

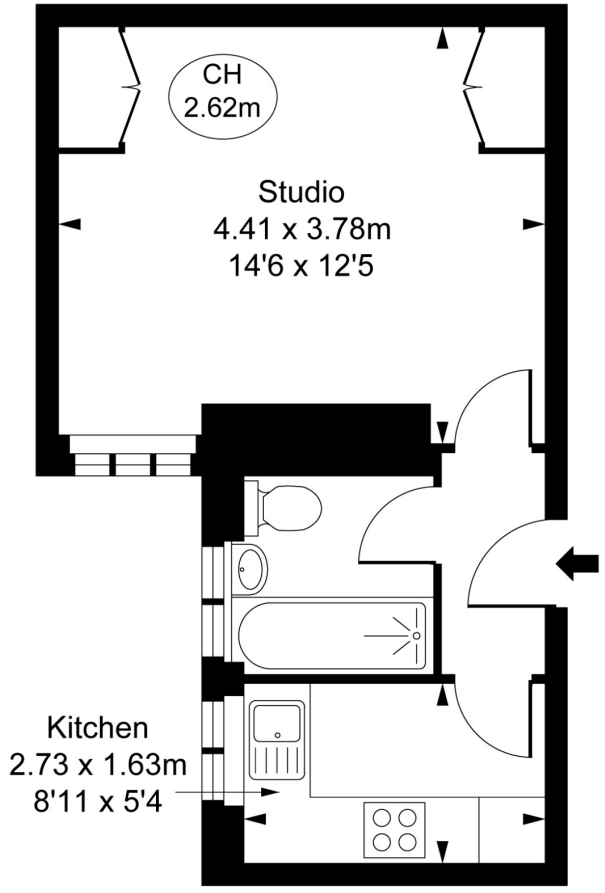


for every step...

winkworth.co.uk

Winkworth wishes to inform prospective buyers and tenants that these particulars are a guide and act as information only. All our details are given in good faith and believed to be correct at the time of printing but they don't form part of an offer or contract. No Winkworth employee has authority to make or give any representation or warranty in relation to this property. All fixtures and fittings, whether fitted or not are deemed removable by the vendor unless stated otherwise and room sizes are measured between internal wall surfaces, including furnishings.

**Britten House,
Britten Street, SW3**
Approximate Gross Internal Area
27.03 sq m / 291 sq ft
(CH = Ceiling Heights)



Second Floor

This plan is not to scale. It is for guidance and not for valuation purposes.
All measurements and areas are approximate only, and have been prepared in accordance with the current edition of the RICS Code of Measuring Practice.
© Fulham Performance