

## Jeffrey's Court, Jeffrey's Road, London, SW4

£249,950 Leasehold

A stunning studio flat on the lower ground floor of this period property which is conveniently located close to Stockwell Underground Station. EPC rating C.

## LOCATION

Jeffreys Road runs between Clapham Road and Larkhall Lane, close to Larkhall Park. The local area has a vast range of amenities to choose from, especially from Clapham High Street.

## DESCRIPTION

When you enter the flat from the communal hallway on the lower ground floor, you'll find an open-plan bedroom and living area. The room has space for a double bed and freestanding furniture, plus built-in storage. It also offers a view of the rear garden and car park.

The modern kitchen comes with wooden worktops, providing plenty of storage and counter space. There is also room for a washing machine and a fridge freezer.

Next to the kitchen, the bathroom includes a WC, sink, and a bath with a shower.

## SERVICE CHARGE, GROUND RENT, COUNCIL TAX

Service Charge - £1,246 per annum

Ground Rent - Nil

Council Tax Band - A

## PARKING

On-street parking can be obtained via Lambeth Council

## UTILITIES

Electricity – mains

Gas – mains

Water – mains

Heating – gas

Sewerage – mains

Broadband – ultrafast broadband

## LOCAL AUTHORITY

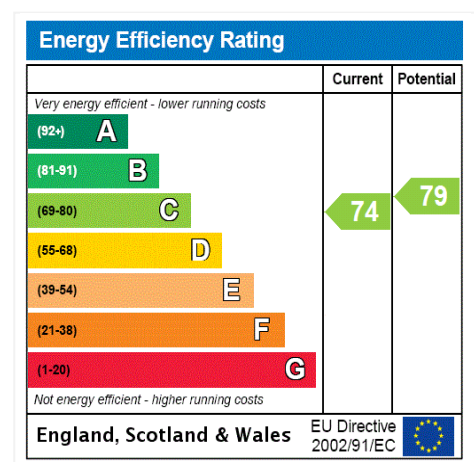
Lambeth

## TENURE

Leasehold - 999 years from 1 January 2021

## DIRECTIONS

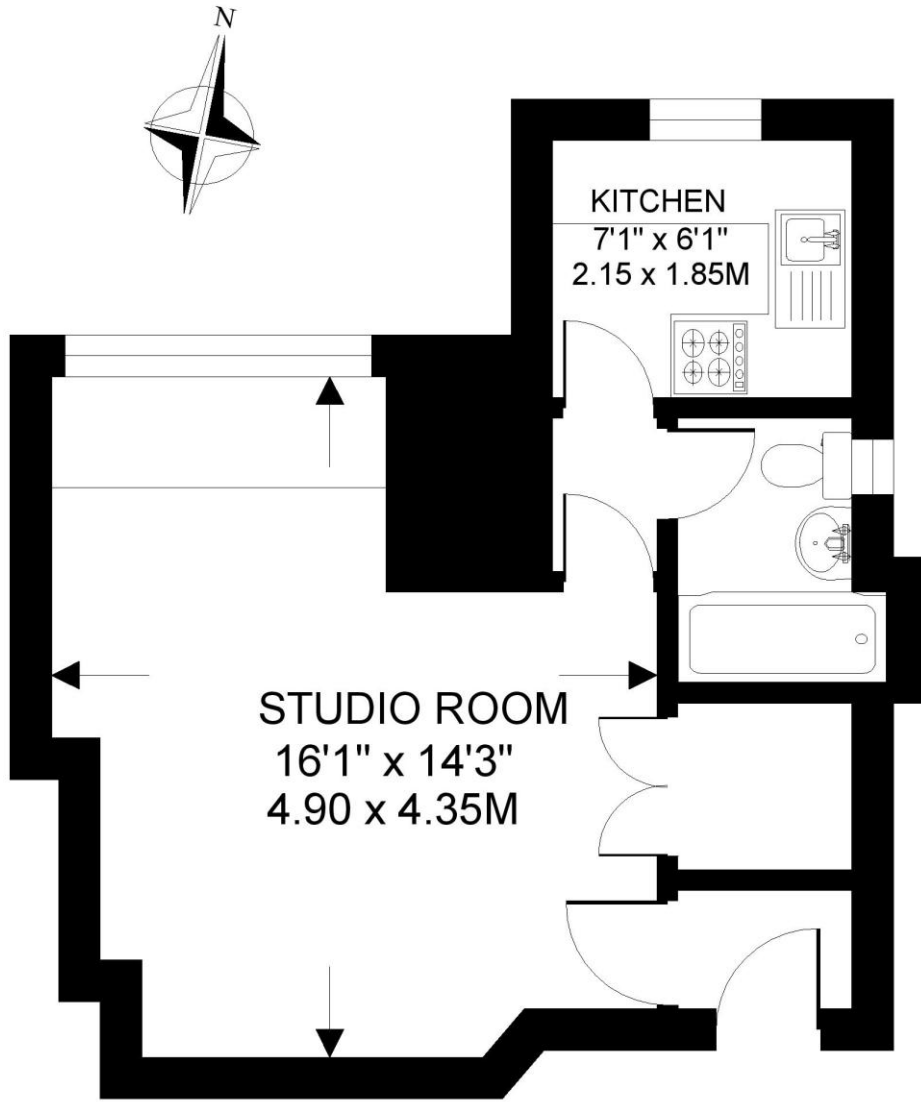
Jeffreys Road is located off Clapham Road, which is approximately 0.3 miles away from Stockwell Underground Station (Victoria and Northern Line) and 0.5 miles away from Clapham North Underground Station (Northern Line). The flat is approximately 75 metres off Clapham Road which is well served with bus routes into the City and West End.





JEFFREYS COURT. SW4  
STUDIO FLAT

Approximate gross floor area  
304 SQ.FT / 28.2 SQ.M.



LOWER GROUND FLOOR

*This floorplan is for illustration purposes only and is not to scale. The position and size of doors, windows, appliances and other features are approximate.*  
Copyright: These plans should not be reproduced by any other person, without permission.  
This floor plan produced for Winkworth by Floorplanners 07801 228850

**Kennington** | 020 7587 0600 | [kennington@winkworth.co.uk](mailto:kennington@winkworth.co.uk)