



ST. THOMAS'S ROAD, FINSBURY PARK, N4
£495 PER WEEK PART FURNISHED

A MODERN TWO BED FIRST FLOOR CONVERSION APARTMENT SET IN A QUIET GATED DEVELOPMENT WITH EXCELLENT TRANSPORT LINKS

SUMMARY:

Set within this quiet gated development is this modern two bed first floor conversion apartment. This charming property consists of a larger than average living area, with ample dining room, making it the perfect entertaining space. There is one double room and a large master suite with bathroom. There is a further second bathroom, both with a modern and contemporary feel. The property is in immaculate condition throughout and is set back from the road, overlooking the public allotment opposite making it lovely and peaceful. St Thomas Road is set within walking distance of both Arsenal tube (Piccadilly Line) and Finsbury Park tube (Victoria and Piccadilly Line). There are also strong bus route's both into the City and West End. The cafe's, restaurants and amenities of Blackstock Road and Highbury Barn are both within walking distance.

Islington | 0207 354 2480 | islington@winkworth.co.uk

Winkworth

Tenant Fees Apply: Details of fees for tenant referencing, tenancy agreement admin fees and renewal fees are available on the Winkworth website and the link can be found with the displayed rent for the property. Tenants should ensure they are fully conversant with these upfront fees and other costs that are involved at the outset of the tenancy before making an offer to rent and your local Winkworth office will provide written details upon request.

winkworth.co.uk

See things differently



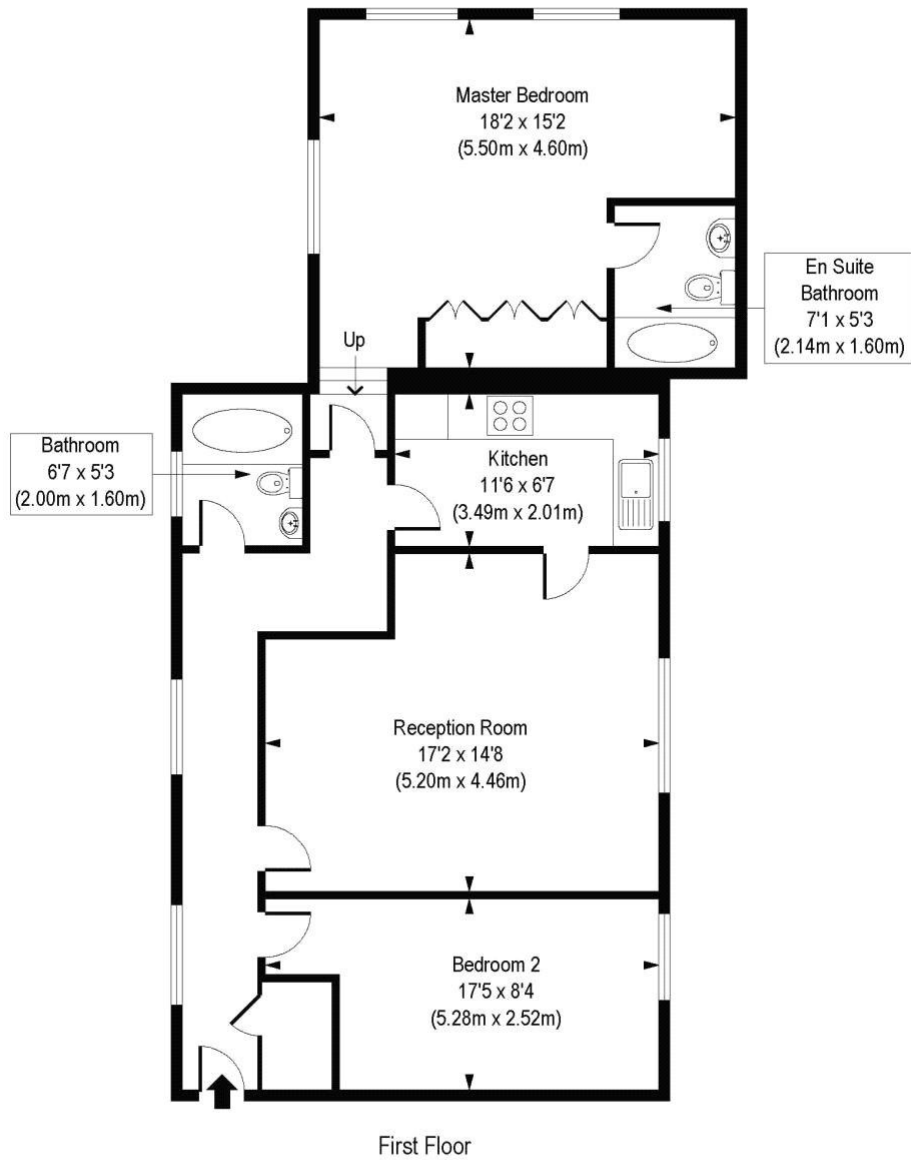


ACCOMMODATION

Long Let, 2 Bedrooms, 1 Reception Room, 2 Bathrooms, Flat/Apartment, First Floor, Period, Part Furnished

St Thomas Road, N4

Approx. Gross Internal Area 912 sq. ft / 84.77 sq. m



COMPLIANT WITH RICS CODE OF MEASURING PRACTICE Floorplan is for illustrative purposes only and is not to scale. Every attempt has been made to ensure the accuracy of the floorplan shown, however all measurements, fixtures, fittings and data shown are an approximate interpretation for illustrative purposes only. Liability for errors, omissions or mis-statement through negligence or otherwise is hereby excluded.

This floorplan is for illustration purposes only and is not to scale. The position and size of doors, windows, appliances and other features are approximate.

Islington | 0207 354 2480 | islington@winkworth.co.uk

Winkworth

winkworth.co.uk

See things differently

Winkworth wishes to inform prospective buyers and tenants that these particulars are a guide and act as information only. All our details are given in good faith and believed to be correct at the time of printing but they don't form part of an offer or contract. No Winkworth employee has authority to make or give any representation or warranty in relation to this property. All fixtures and fittings, whether fitted or not are deemed removable by the vendor unless stated otherwise and room sizes are measured between internal wall surfaces, including furnishings.