



FIRST FLOOR FLAT, ELSINORE ROAD, LONDON, UNITED KINGDOM, SE23
ASKING PRICE - £475,000.00

Charming 2-Bedroom Victorian Conversion – First Floor, Elsinore Road, Forest Hill SE23. Situated on the desirable Elsinore Road in the heart of Forest Hill, this beautiful 2-bedroom, first-floor Victorian conversion effortlessly combines period charm with modern comfort. The spacious open-plan reception and kitchen area offers a light and airy space, perfect for both relaxing and entertaining.

DESCRIPTION:

Nestled in the heart of Forest Hill, this property is ideally located just 0.6 miles from both Forest Hill and Honor Oak Park Stations, offering excellent transport links. The nearby Horniman Gardens, only 0.7 miles away, provide a beautiful green space, while Dulwich Park is just 1.5 miles away for expansive outdoor leisure. With local schools, shops, and cafés within easy reach, this location offers the perfect balance of convenience and relaxation.

- 2 Bedrooms.
- Open-Plan Reception and Kitchen
- Newly Fitted Shower Room
- High Ceilings
- Double Glazing
- Front Garden
- Share of Freehold

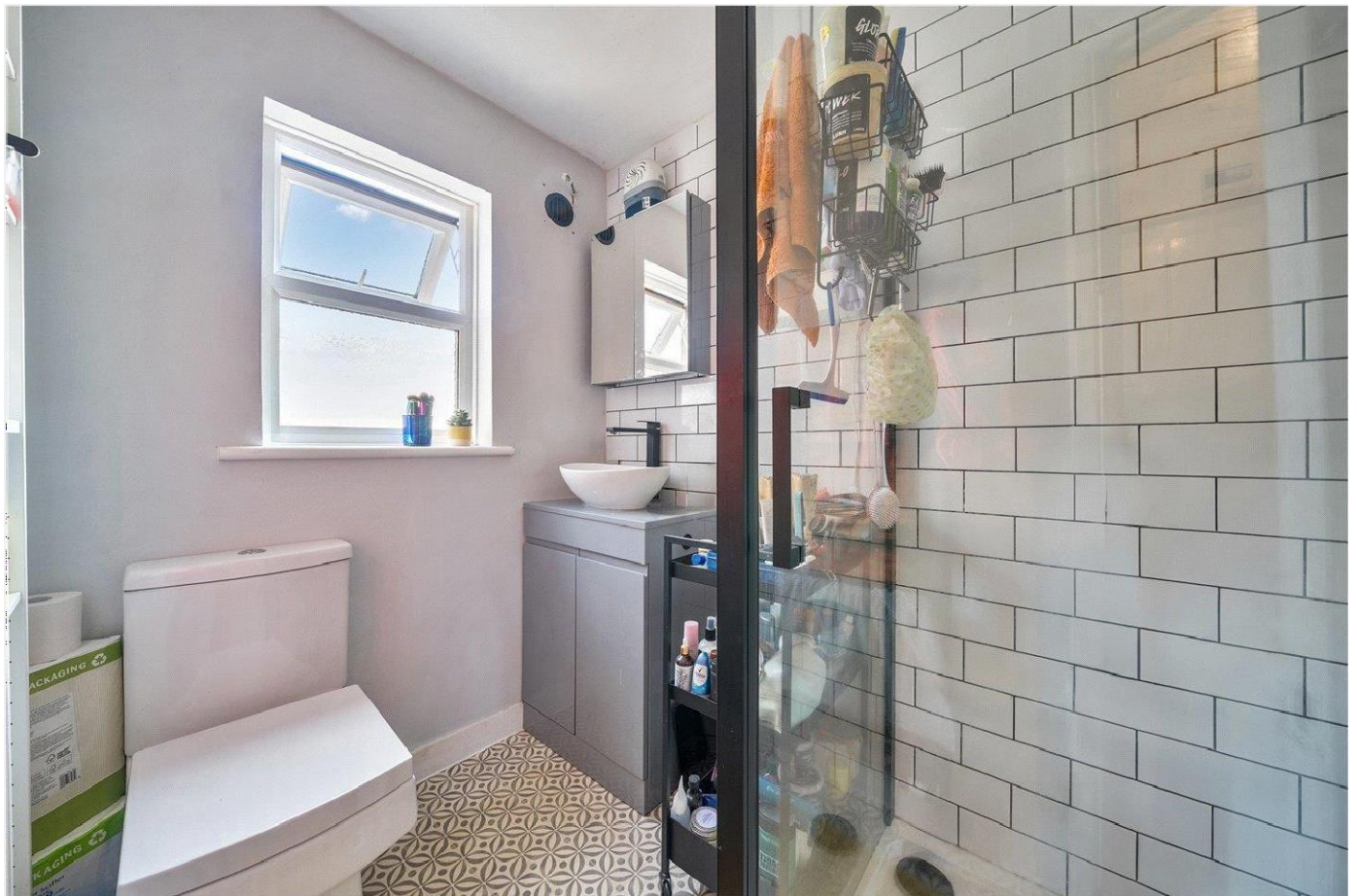
Forest Hill | | foresthill@winkworth.co.uk

winkworth.co.uk

Winkworth

for every step...

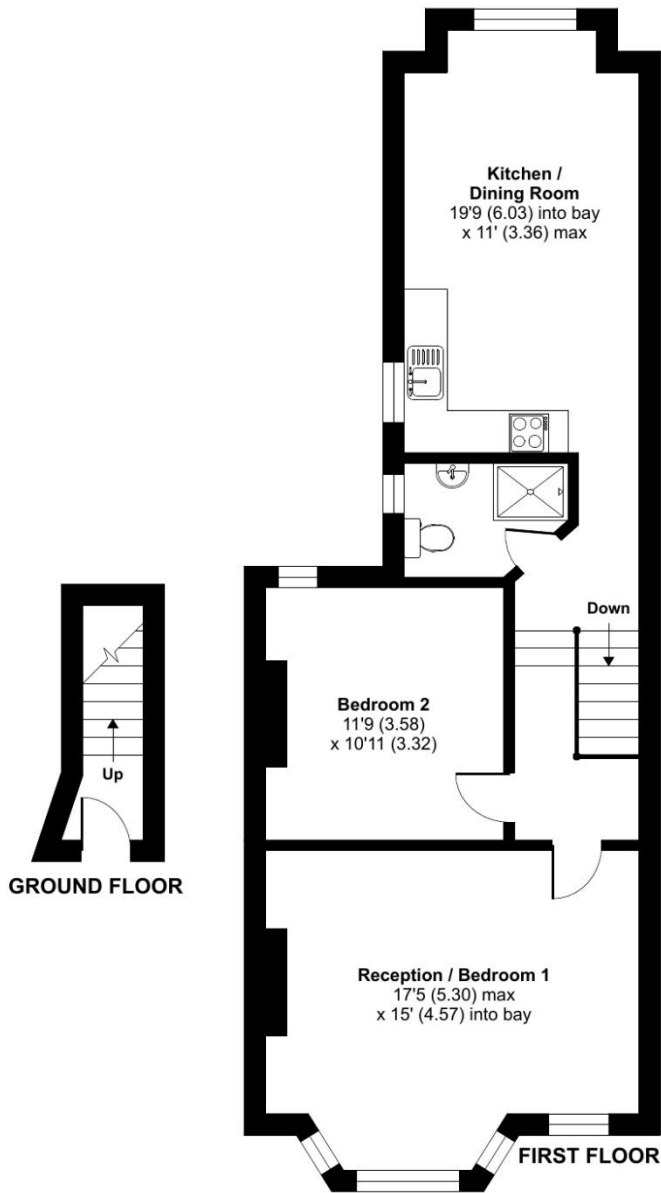




Elsinore Road, London, SE23

Approximate Area = 763 sq ft / 70.9 sq m

For identification only - Not to scale



 Floor plan produced in accordance with RICS Property Measurement Standards incorporating International Property Measurement Standards (IPMS2 Residential). © nchecon 2025. Produced for Winkworth Forest Hill and New Cross. REF: 1254307

This floorplan is for illustration purposes only and is not to scale. The position and size of doors, windows, appliances and other features are approximate.

Tenure: To be advised

Term: 0 year and 0 months

Service Charge: £0 per annum

Ground Rent: £ 0 Annually (subject to increase)

Council Tax Band:

Where no figures are shown, we have been unable to ascertain the information. All figures that are shown were correct at the time of printing.

Forest Hill | | foresthill@winkworth.co.uk

Winkworth

for every step...

[winkworth.co.uk](https://www.winkworth.co.uk)

Winkworth wishes to inform prospective buyers and tenants that these particulars are a guide and act as information only. All our details are given in good faith and believed to be correct at the time of printing but they don't form part of an offer or contract. No Winkworth employee has authority to make or give any representation or warranty in relation to this property. All fixtures and fittings, whether fitted or not are deemed removable by the vendor unless stated otherwise and room sizes are measured between internal wall surfaces, including furnishings.