



VINCENT SQUARE, UK, SW1P

£1,150,000

LEASEHOLD

At a glance...

- Two Bedrooms
- Two Bathrooms (One Ensuite)
- Quiet and Private
- Lift, Gym, Porter & Parking
- Excellent Condition

Winkworth

for every step...



Energy Efficiency Rating		
	Current	Potential
Very energy efficient - lower running costs		
(92+) A		
(81-91) B	83	83
(69-80) C		
(55-68) D		
(39-54) E		
(21-38) F		
(1-20) G		
Not energy efficient - higher running costs		
England, Scotland & Wales	EU Directive 2002/91/EC	

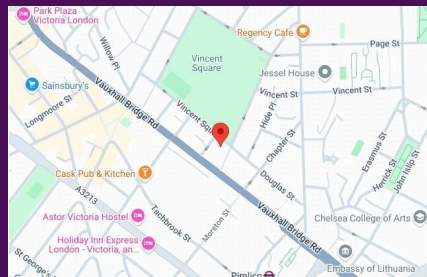
VINCENT SQUARE, UK, SW1P

£1,150,000
LEASEHOLD

A fantastic apartment which offers a larger than usual layout meaning the accommodation is well proportioned and spacious throughout.

Positioned on the 1st floor (with lift) of this exclusive modern building on Vincent Square the flat covers some 931 square feet and all the rooms overlook the internal courtyard meaning the flat feels private and is also incredibly quiet.

The current owners have carried out some refurbishment meaning the flat is presented in excellent condition allowing an incoming purchaser to move straight in. The large reception room is bright and has a small balcony over the courtyard. The separate kitchen is clean and modern and both bedrooms are a good size, the master particularly large with excellent storage. There is a great family bathroom with bath and large ensuite with walk-in shower to the master and both bathrooms are particularly smart.

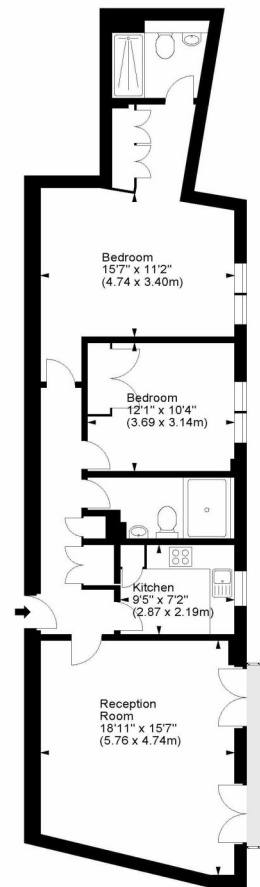


winkworth wishes to inform prospective buyers and tenants that these particulars are a guide and act as information only. All our details are given in good faith and believed to be correct at the time of printing but they don't form part of an offer or contract. No winkworth employee has authority to make or give any representation or warranty in relation to this property. All fixtures and fittings, whether fitted or not are deemed removable by the vendor unless stated otherwise and room sizes are measured between internal wall surfaces - including fire-chimneys.

Vincent Square, SW1



Approx. Gross Internal Area
931 Sq Ft - 86.49 Sq M



First Floor

For illustration purposes only. Not to scale.
All measurements are taken and shown at floor level.
www.r3photography.co.uk © Photography / Floor Plans / Lease Plans / EPCs



Pimlico & Westminster

020 7828 1786

pimlico@winkworth.co.uk

winkworth.co.uk/pimlico-westminster

Winkworth

for every step...