



Bramham Gardens, Earl's Court, London, SW5

£425 per week* / £1,841.67 per month – Furnished

A fantastic opportunity to rent this first floor studio flat with mezzanine sleeping level in a well-maintained Victorian conversion.

Studio Room | Mezzanine Sleeping Area | 1 Bathroom | First Floor Flat | 321 Approx sq ft | EPC: D

APPLICANT FEES MAY BE APPLICABLE
HOLDING DEPOSIT OF 1 WEEK'S RENT
SECURITY DEPOSIT OF 5 WEEKS' RENT

Winkworth



DESCRIPTION

This well-proportioned studio flat benefits from a contemporary feel, high ceilings and is well-fitted throughout. Heating and hot water is included. The property is available from the start of October on a furnished basis.

Bramham Gardens is conveniently located within easy access to both South Kensington and Gloucester Road.



ACCOMMODATION

Studio Room, Mezzanine Sleeping Area, 1 Bathroom, First Floor Flat, Furnished, 321 Approx Sq ft

COUNCIL TAX BAND

Band C

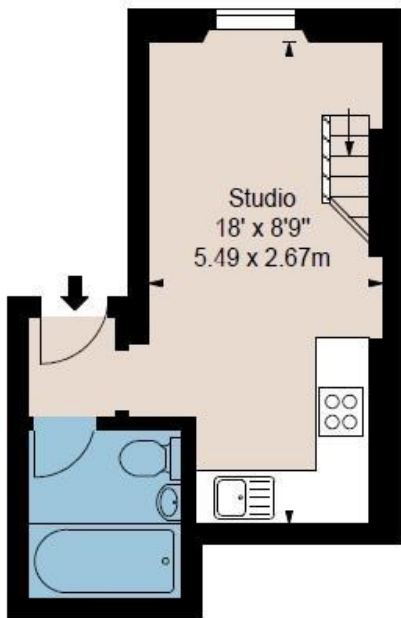


BRAMHAM GARDENS SW5

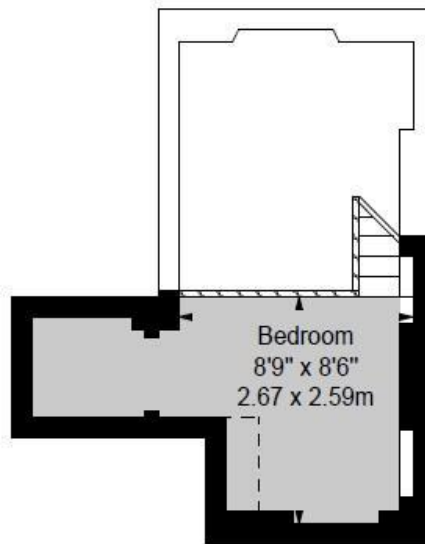
Approx. Gross Internal Area *
321 Ft² - 29.82 M²

Illustration For Identification Only, Not to Scale
All Calculations include Any/All Areas Under 1.5m Head Height.

* As Defined by RICS - Code of Measuring Practice
(Measurements Taken From Supplied Plans)



First Floor



Mezzanine



www.bkrfloorplans.co.uk

T: 0845 257 2023

© BKR 2015

Energy Efficiency Rating		Current	Potential
Very energy efficient - lower running costs			
(92+)	A		
(81-91)	B		
(69-80)	C		
(55-68)	D	62	72
(39-54)	E		
(21-38)	F		
(1-20)	G		
Not energy efficient - higher running costs			
England, Scotland & Wales		EU Directive 2002/91/EC	

This floorplan is for illustration purposes only and is not to scale. The position and size of doors, windows, appliances and other features are approximate.

*Please note, rent cannot be paid on a weekly basis.

South Kensington Lettings | 020 7370 6767 | lettings.southken@winkworth.co.uk

winkworth.co.uk

Winkworth

for every step...

Winkworth wishes to inform prospective buyers and tenants that these particulars are a guide and act as information only. All our details are given in good faith and believed to be correct at the time of printing but they don't form part of an offer or contract. No Winkworth employee has authority to make or give any representation or warranty in relation to this property. All fixtures and fittings, whether fitted or not are deemed removable by the vendor unless stated otherwise and room sizes are measured between internal wall surfaces, including furnishings.