



CITY GATE, READING, BERKSHIRE, RG1 2QW
£1,300 PER MONTH UNFURNISHED

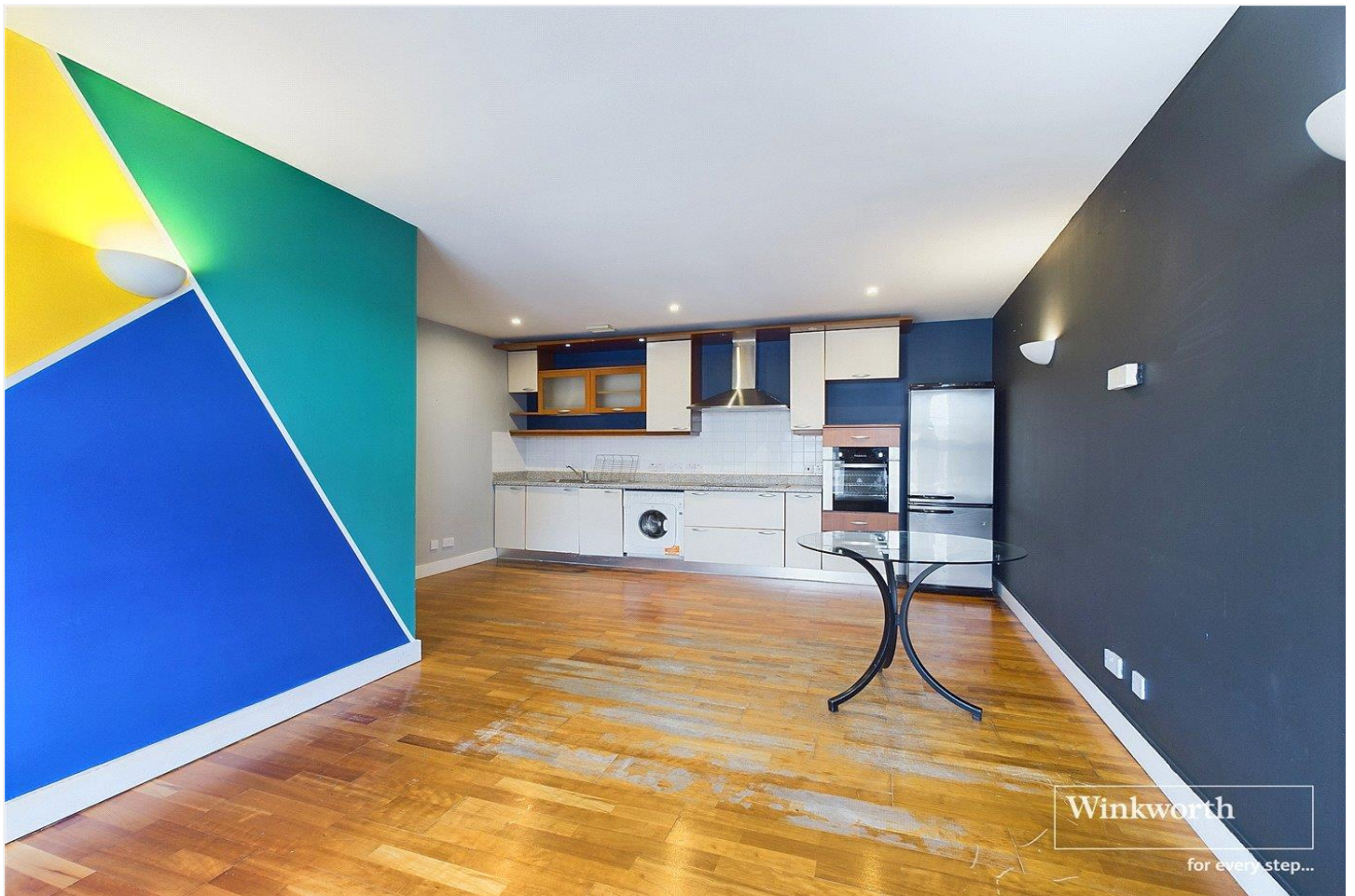
TWO BEDROOM EXECUTIVE APARTMENT IN THE HEART OF READING TOWN CENTRE

Reading | 0118 4022 300 | reading@winkworth.co.uk

Winkworth

for every step...

winkworth.co.uk



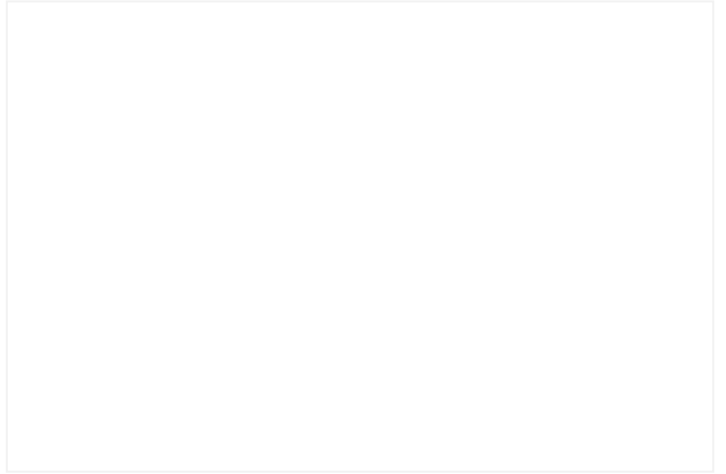
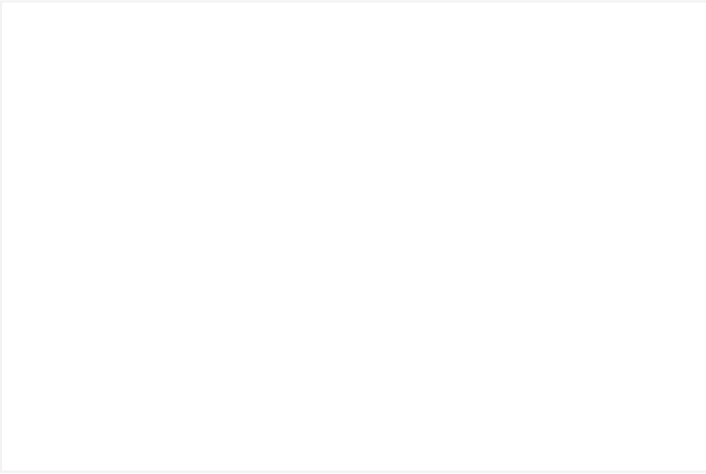
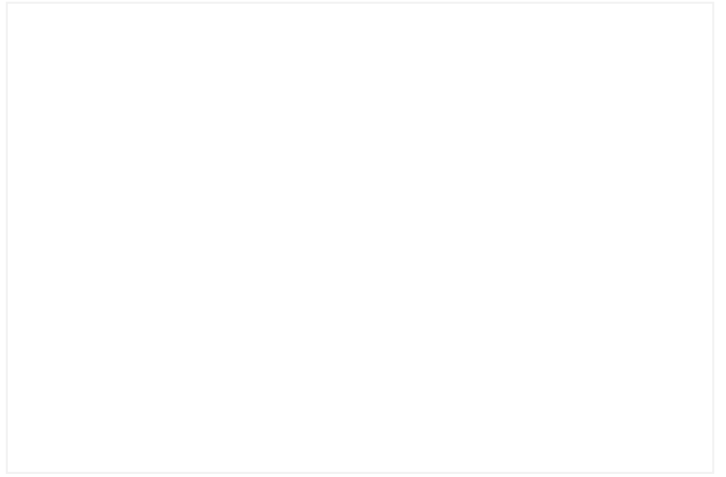
DESCRIPTION:

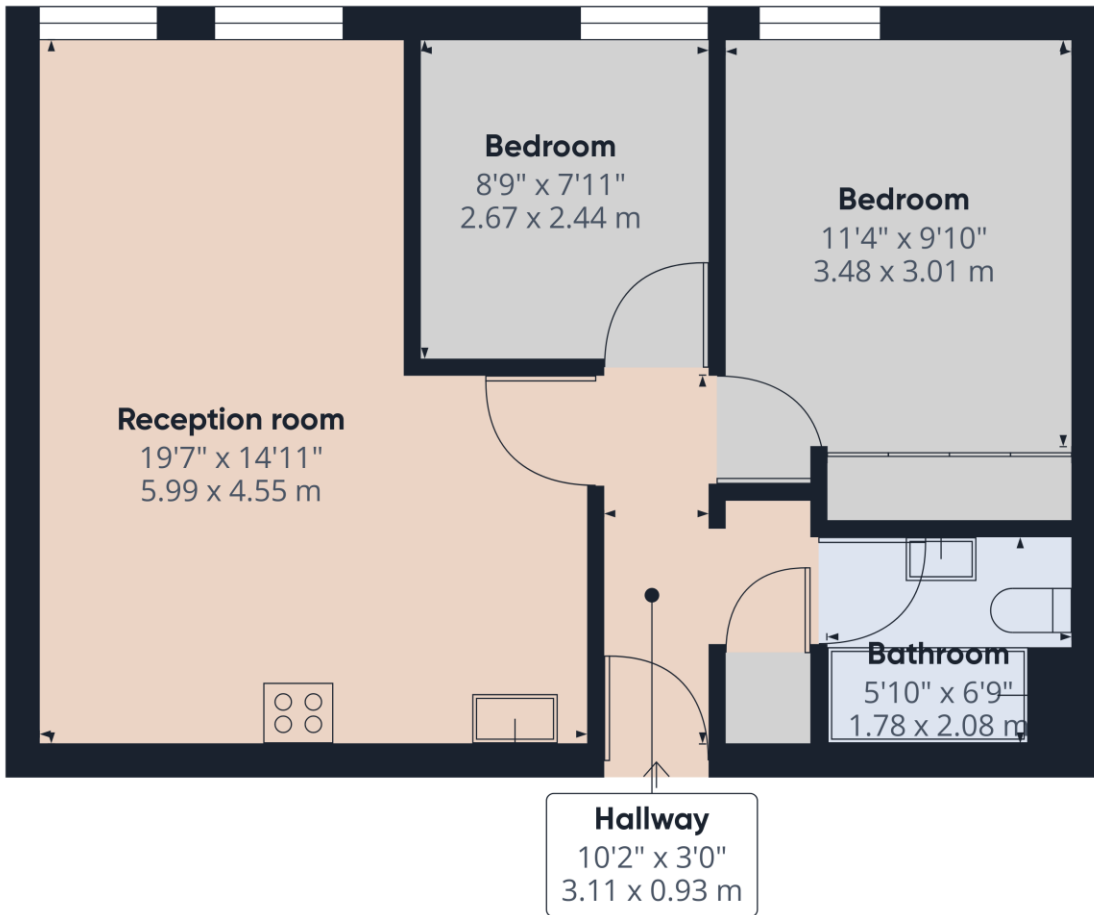
Modern two bedroom apartment in the heart of Reading Town Centre situated just a few minutes' walk from the Oracle shopping and leisure complex and Reading station. The property comprises open plan living room/kitchen, two bedrooms and a three piece bathroom. Additional benefits include secure allocated parking and lift access. Available now. Unfurnished.

AT A GLANCE

- One double bedroom
- Open plan kitchen and living area
- Lift to all floors
- Council tax band C
- Secure parking
- Furnished
- Available now







Approximate total area⁽¹⁾
 536.26 ft²
 49.82 m²

(1) Excluding balconies and terraces

While every attempt has been made to ensure accuracy, all measurements are approximate, not to scale. This floor plan is for illustrative purposes only.
 Calculations are based on RICS IPMS 3C standard.
 GIRAFFE360

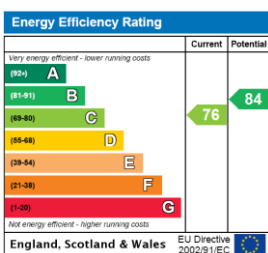
This floorplan is for illustration purposes only and is not to scale. The position and size of doors, windows, appliances and other features are approximate.

Deposit: £1,500.00

Holding Deposit: £300.00

Council Tax Band: C

Where no figures are shown, we have been unable to ascertain the information. All figures that are shown were correct at the time of printing.



Reading | 0118 4022 300 | reading@winkworth.co.uk



for every step...

winkworth.co.uk

Winkworth wishes to inform prospective buyers and tenants that these particulars are a guide and act as information only. All our details are given in good faith and believed to be correct at the time of printing but they don't form part of an offer or contract. No Winkworth employee has authority to make or give any representation or warranty in relation to this property. All fixtures and fittings, whether fitted or not are deemed removable by the vendor unless stated otherwise and room sizes are measured between internal wall surfaces, including furnishings.