



**FLAT 75, CLAREWOOD COURT, CRAWFORD STREET, LONDON, W1H
£1,200 PER WEEK UNFURNISHED**

A FANTASTICALLY LOCATED THREE BEDROOM APARTMENT SET ON THE TOP FLOOR OF A PORTERED MANSION BUILDING IN THE HEARTH OF MARYLEBONE.

DESCRIPTION:

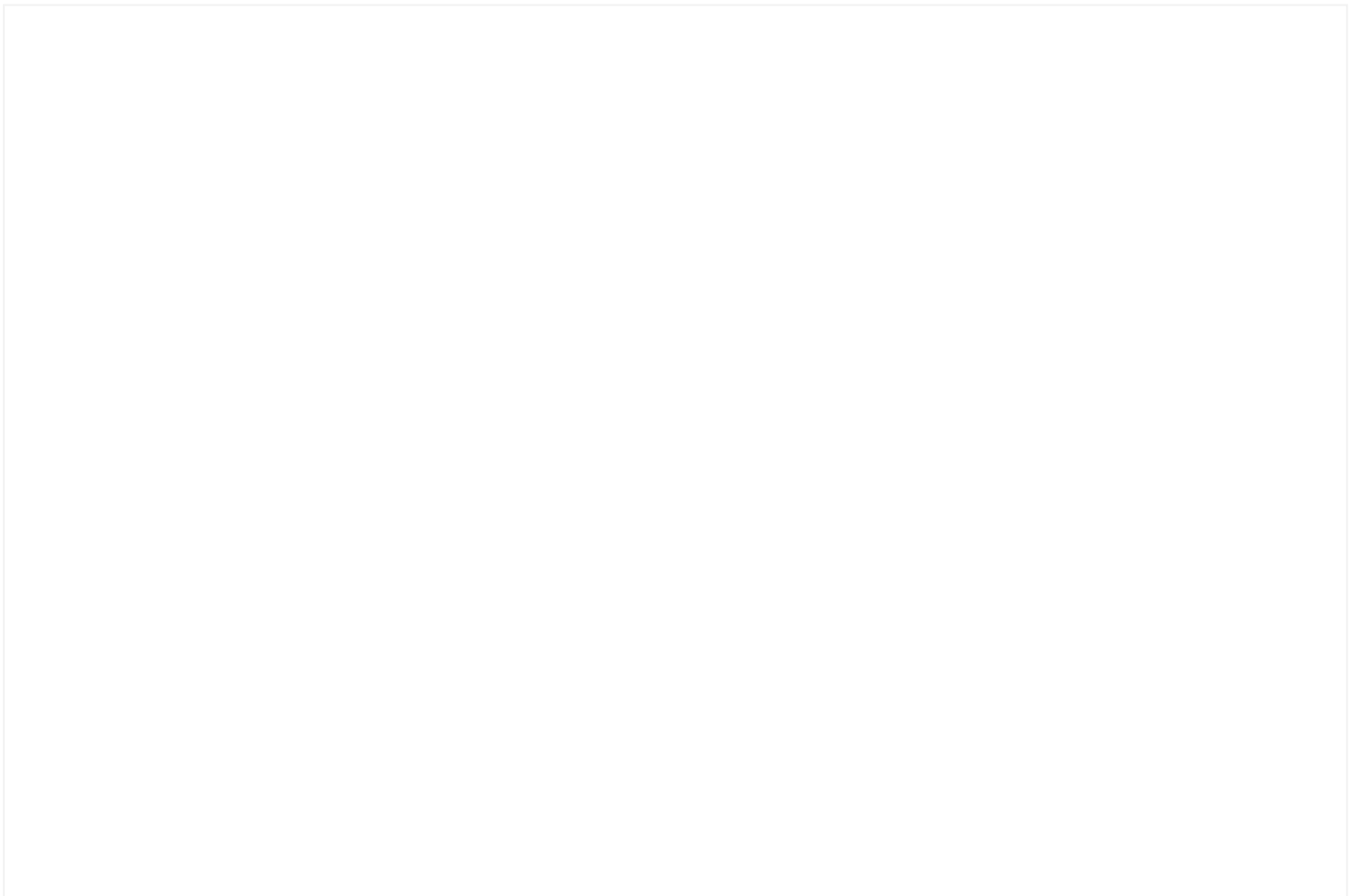
The property benefits from great panoramic views and a very large reception room. It also features a principal bedroom with a separate family bathroom, a second bedroom with an en-suite shower room, a further bedroom and a fitted kitchen. Clarewood Court is ideally located near Regent's Park, Hyde Park, and Marylebone's shops and restaurants. The flat also benefits from excellent transport links via Edgware Road, Marble Arch, Marylebone, and Paddington stations.

AT A GLANCE

- 1190 sq ft
- Top floor with lift
- 3 bedrooms
- 2 bathrooms
- Unfurnished

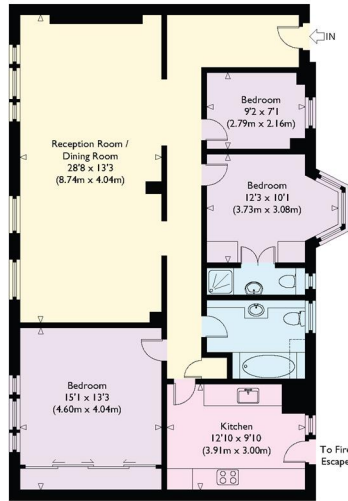
Knightsbridge & Chelsea | 0207 589 6616 | knightsbridge@winkworth.co.uk





Crawford Street, W1

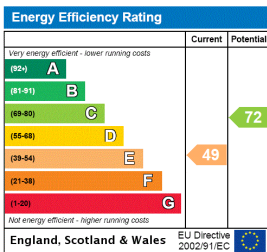
Approximate Gross Internal Floor Area : 1190 sq ft / 110.6 sq m



Sixth Floor

Illustration for identification purposes only, measurements are approximate, not to scale.

This floorplan is for illustration purposes only and is not to scale. The position and size of doors, windows, appliances and other features are approximate.



Deposit: equivalent of five week rent of rent agreed

Holding Deposit: equivalent to one week rent of rent agreed

Council Tax Band: G

Where no figures are shown, we have been unable to ascertain the information. All figures that are shown were correct at the time of printing.