



## Harrington Gardens, South Kensington, London, SW7

£692.31 per week\* / £3,000 per month – Furnished or Unfurnished

Freshly redecorated throughout, a wonderfully light two bedroom apartment with access to award-winning communal gardens.

2 Bedrooms | 1 Reception Room | 1 Bathroom | Third Floor Flat | Access to Communal Gardens (by separate arrangement) | 608 Approx sq ft | EPC: C

APPLICANT FEES MAY BE APPLICABLE  
DEPOSIT OF 5 WEEKS' RENT  
HOLDING DEPOSIT OF 1 WEEK'S RENT

**Winkworth**



## DESCRIPTION

Situated on the 3rd floor of an attractive period building, this property offers a spacious split-level living space and beautiful hard-wood flooring throughout. The primary bedroom is located to the rear of the building and features ample built-in storage. The smaller second bedroom is separated from the reception room by large double doors and would also make a lovely office space.

The flat further benefits from access to stunning communal gardens (by separate arrangement), and is available immediately on a furnished or unfurnished basis.



## ACCOMMODATION

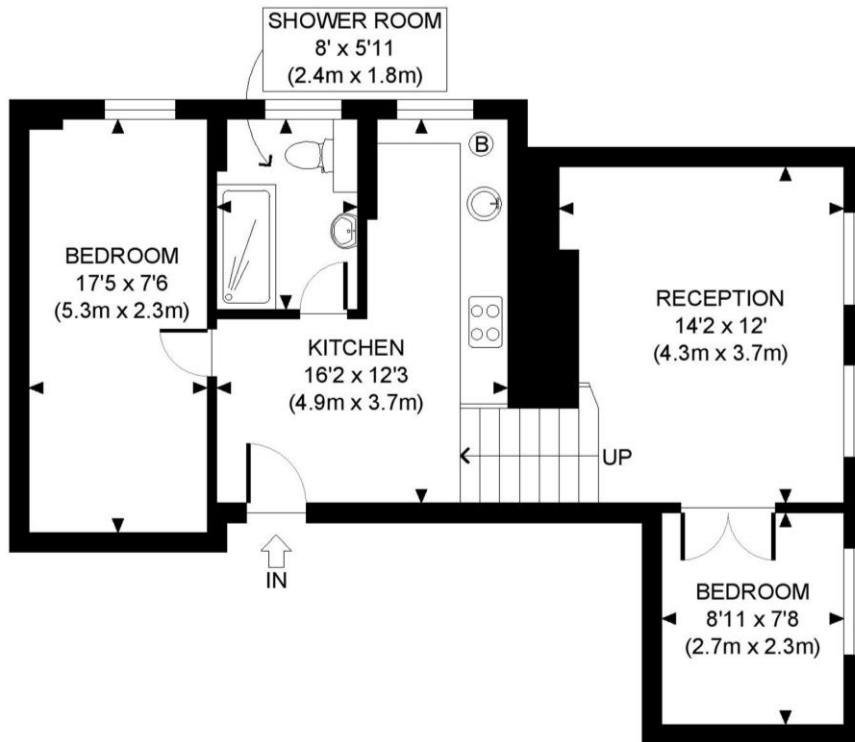
2 Bedrooms, 1 Reception Room,  
1 Bathroom, Study, Third Floor Flat,  
Access to Communal Garden  
(by separate arrangement),  
Unfurnished, 608 Approx Sq ft

## COUNCIL TAX BAND

Band F



Energy Efficiency Rating		
	Current	Potential
Very energy efficient - lower running costs		
(92-) <b>A</b>		
(81-91) <b>B</b>		
(69-80) <b>C</b>	79	83
(55-68) <b>D</b>		
(39-54) <b>E</b>		
(21-38) <b>F</b>		
(1-20) <b>G</b>		
Not energy efficient - higher running costs		
<b>England, Scotland &amp; Wales</b>	EU Directive 2002/91/EC	



THIRD FLOOR  
GROSS INTERNAL  
FLOOR AREA 608 SQ FT



APPROX. GROSS INTERNAL FLOOR AREA: 608 SQ FT/ 56 SQM

**Winkworth**

This plan is for illustrative purposes only and should be used as such by any prospective client. Whilst every attempt has been made to ensure the accuracy of the Floor Plan contained here, measurements of the doors, windows, rooms and any other items are approximate and no responsibility is taken for any errors, omissions, or misstatement. The services, systems and appliances shown have not been tested and no guarantee as to the operability or efficiency can be given.

**PROPERTY PHOTO PLANS**.CO.UK  
ONE STOP SHOP FOR PROPERTY MARKETING

**Winkworth**

\*Please note, the rent cannot be paid on a weekly basis

South Kensington Lettings | 020 7370 6767 | lettings.southken@winkworth.co.uk

[winkworth.co.uk](http://winkworth.co.uk)

for every step...

Winkworth wishes to inform prospective buyers and tenants that these particulars are a guide and act as information only. All our details are given in good faith and believed to be correct at the time of printing but they don't form part of an offer or contract. No Winkworth employee has authority to make or give any representation or warranty in relation to this property. All fixtures and fittings, whether fitted or not are deemed removable by the vendor unless stated otherwise and room sizes are measured between internal wall surfaces, including furnishings.