



STUTTLE HOUSE, BUXTON STREET, LONDON, E1
£425,000 LEASEHOLD

BRIGHT AND SPACIOUS TWO-BEDROOM APARTMENT OFF BRICK LANE

Shoreditch | 020 7749 7650 | shoreditch@winkworth.co.uk

Winkworth

winkworth.co.uk

See things differently



DESCRIPTION:

This bright and spacious 712 sqft two-bedroom apartment is situated on the first floor, just half a mile from the iconic Spitalfields Market. Westerly facing, the property is filled with an abundance of natural light throughout the day, creating a warm and welcoming atmosphere.

Inside, the property comprises a large entrance hall, two generously sized double bedrooms, and a three-piece family bathroom. The kitchen is separate from the living room, with both rooms being bright and spacious, thanks to the large westerly facing windows that fill the spaces with natural light.

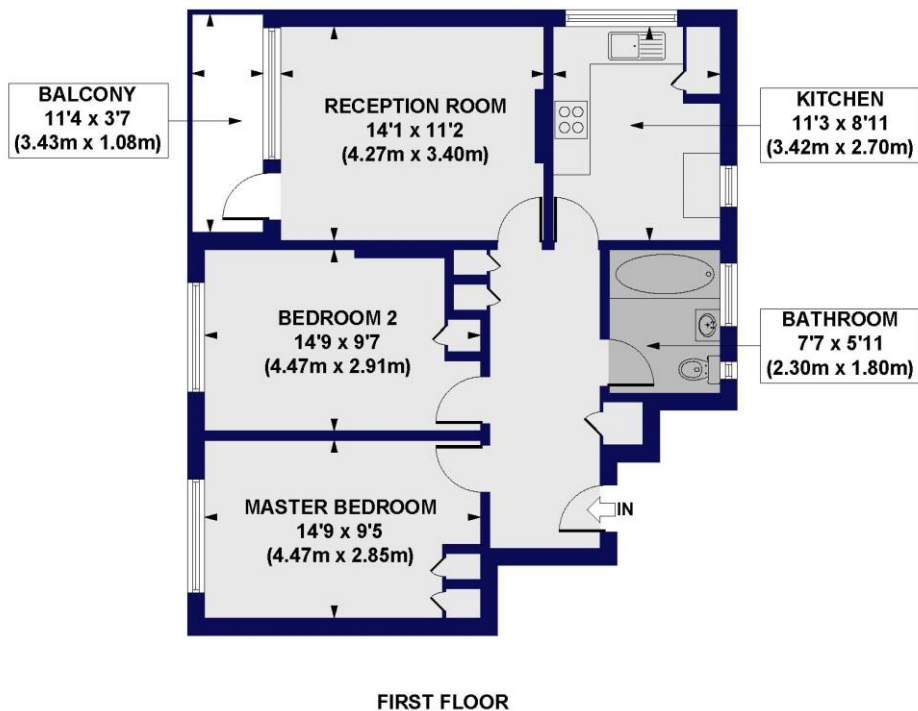
The property is within close proximity to a wide range of transport options such as Shoreditch High Street Overground Station (0.4 miles), Whitechapel Station (0.5 miles), Bethnal Green Overground Station (0.6 miles), Liverpool Street Station (0.7 miles), along with a vast range of local amenities, boutique shops, cafes, bars and restaurants on your doorstep.

Winkworth



Winkworth

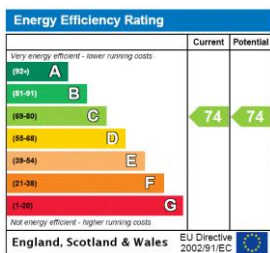
Stuttle House, Buxton Street, E1
 Approx. Gross Internal Floor Area 712 sq. ft / 66.18 sq. m



All measurements of walls, doors, windows, fittings and appliances, including their size and location, are shown as standard sizes and do not constitute any warranty or representation by the seller, their agent or CP Creative. Any intending purchaser must satisfy himself by inspection or otherwise as to the correctness of the information contained in these plans. This plan is for illustrative purposes only and should be used as such by any prospective purchasers.

Winkworth

This floorplan is for illustration purposes only and is not to scale. The position and size of doors, windows, appliances and other features are approximate.



Shoreditch | 020 7749 7650 | shoreditch@winkworth.co.uk



winkworth.co.uk

See things differently

Winkworth wishes to inform prospective buyers and tenants that these particulars are a guide and act as information only. All our details are given in good faith and believed to be correct at the time of printing but they don't form part of an offer or contract. No Winkworth employee has authority to make or give any representation or warranty in relation to this property. All fixtures and fittings, whether fitted or not are deemed removable by the vendor unless stated otherwise and room sizes are measured between internal wall surfaces, including furnishings.