



WILSON TOWER, 16 CHRISTIAN STREET, LONDON, E1
£380 PER WEEK FURNISHED

CONTEMPORARY ONE BEDROOM APARTMENT WITH PRIVATE ROOF TERRACE AND STUNNING VIEWS OF THE CITY

Shoreditch | 020 7749 7650 | shoreditch@winkworth.co.uk



Tenant Fees Apply: Details of fees for tenant referencing, tenancy agreement admin fees and renewal fees are available on the Winkworth website and the link can be found with the displayed rent for the property. Tenants should ensure they are fully conversant with these upfront fees and other costs that are involved at the outset of the tenancy before making an offer to rent and your local Winkworth office will provide written details upon request.

winkworth.co.uk

See things differently



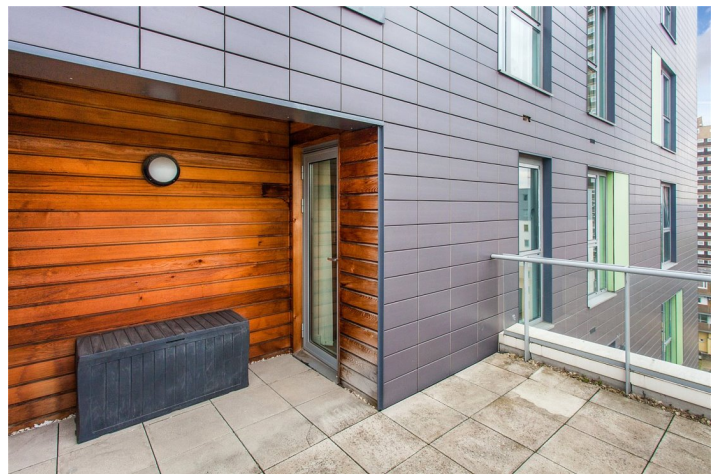
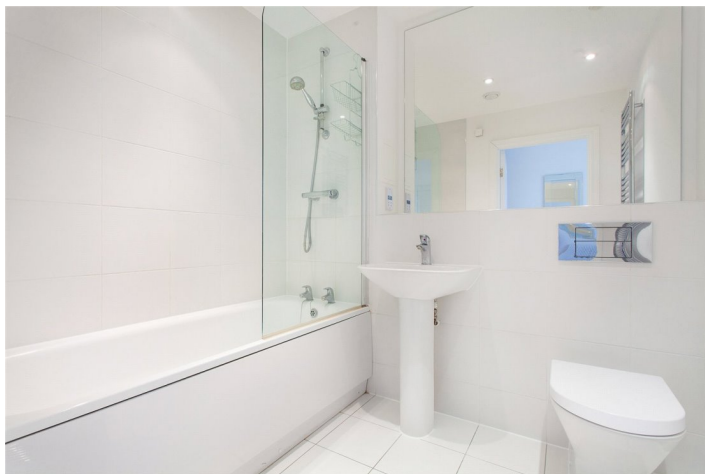
DESCRIPTION:

An outstanding apartment just 0.5 of a mile from Aldgate East Station and situated in a highly desirable development that benefits from concierge, resident gymnasium and two communal roof terraces.

The apartment is a spacious one bed that also has a high specification fitted kitchen (open-plan), reception room, modern bathroom suite and a large private roof terrace with beautiful views of the city skyline.

The development is located just 10 minutes' walk from Leaman Street and is also close to Aldgate East Tube. Offered furnished and perfect for a professional couple.

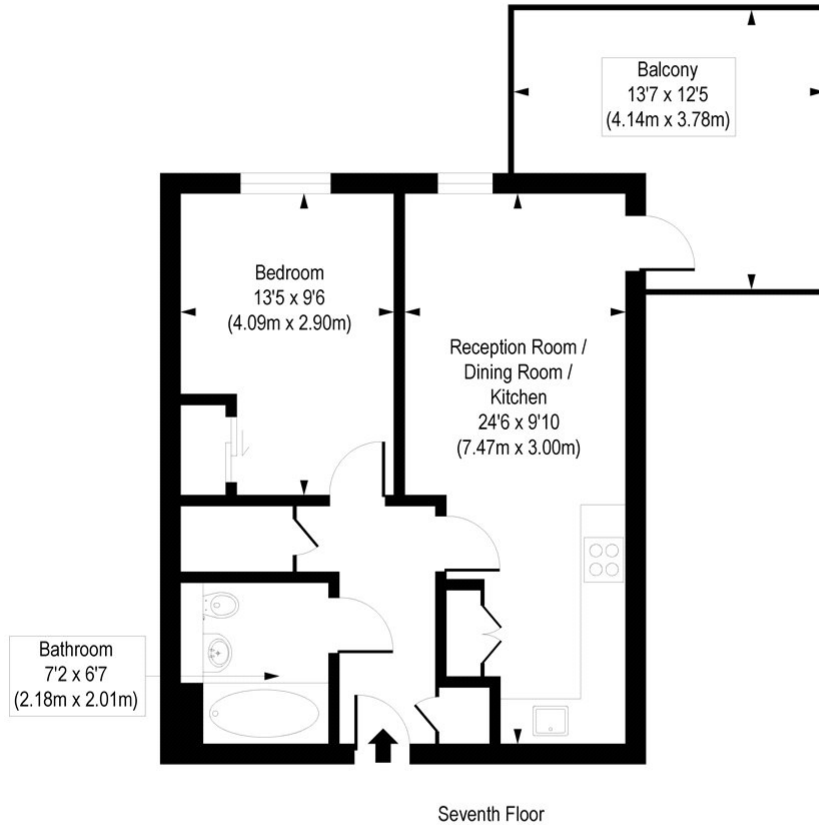
Winkworth



Winkworth

Wilson Tower, Christian Street, E1

Approx. Gross Internal Floor Area 486 sq. ft / 45.15 sq. m



COMPLIANT WITH RICS CODE OF MEASURING PRACTICE. Floorplan is for illustrative purposes only and is not to scale. Every attempt has been made to ensure the accuracy of the floorplan shown, however all measurements, fixtures, fittings and data shown are an approximate interpretation for illustrative purposes only. Liability for errors, omissions or mis-statement through negligence or otherwise is hereby excluded.

This floorplan is for illustration purposes only and is not to scale. The position and size of doors, windows, appliances and other features are approximate.

Shoreditch | 020 7749 7650 | shoreditch@winkworth.co.uk

Winkworth

winkworth.co.uk

See things differently

Winkworth wishes to inform prospective buyers and tenants that these particulars are a guide and act as information only. All our details are given in good faith and believed to be correct at the time of printing but they don't form part of an offer or contract. No Winkworth employee has authority to make or give any representation or warranty in relation to this property. All fixtures and fittings, whether fitted or not are deemed removable by the vendor unless stated otherwise and room sizes are measured between internal wall surfaces, including furnishings.