



BIRD IN HAND MEWS, LONDON, SE23
£310,000 SHARE OF FREEHOLD

Nestled in the heart of SE23, this delightful one-bedroom mews property offers the perfect blend of comfort and convenience.

Winkworth

for every step...

Forest Hill | foresthill@winkworth.co.uk
winkworth.co.uk



DESCRIPTION:

Nestled in the heart of SE23, this delightful one-bedroom mews property offers the perfect blend of comfort and convenience. The property is offered chain-free, making it an attractive option for those seeking a smooth and swift move.



Winkworth

for every step...



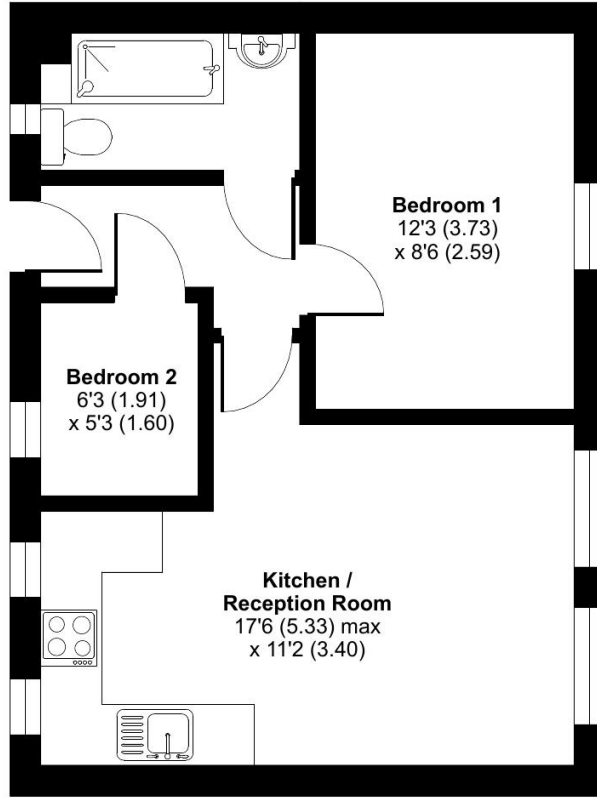
Winkworth

for every step...

Bird In Hand Mews, London, SE23

Approximate Area = 420 sq ft / 39 sq m

For identification only - Not to scale



THIRD FLOOR



Floor plan produced in accordance with RICS Property Measurement Standards incorporating International Property Measurement Standards (IPMS2 Residential). © nchecon 2025. Produced for Winkworth Forest Hill and New Cross. REF: 1235732

This floorplan is for illustration purposes only and is not to scale. The position and size of doors, windows, appliances and other features are approximate.

Energy Efficiency Rating		Current	Potential
Very energy efficient - lower running costs			
(92-100)	A		
(81-91)	B		
(69-80)	C	75	76
(55-68)	D		
(39-54)	E		
(21-38)	F		
(1-20)	G		
Not energy efficient - higher running costs			
England, Scotland & Wales		EU Directive 2002/91/EC	

Tenure: Share of Freehold

Council Tax Band: C

Local Authority: Lewisham

Where no figures are shown, we have been unable to ascertain the information. All figures that are shown were correct at the time of printing.



for every step...

Forest Hill | foresthill@winkworth.co.uk

winkworth.co.uk

Winkworth wishes to inform prospective buyers and tenants that these particulars are a guide and act as information only. All our details are given in good faith and believed to be correct at the time of printing but they don't form part of an offer or contract. No Winkworth employee has authority to make or give any representation or warranty in relation to this property. All fixtures and fittings, whether fitted or not are deemed removable by the vendor unless stated otherwise and room sizes are measured between internal wall surfaces, including furnishings.