



FLEET STREET, LONDON, EC4Y
£1,500,000 LEASEHOLD

**** VIDEO TOUR AVAILABLE ** AN EXCEPTIONALLY
LARGE APARTMENT AVAILABLE ON THE DESIRABLE
FLEET STREET.**

Clerkenwell & City | 020 7405 1288 | clerkenwell@winkworth.co.uk

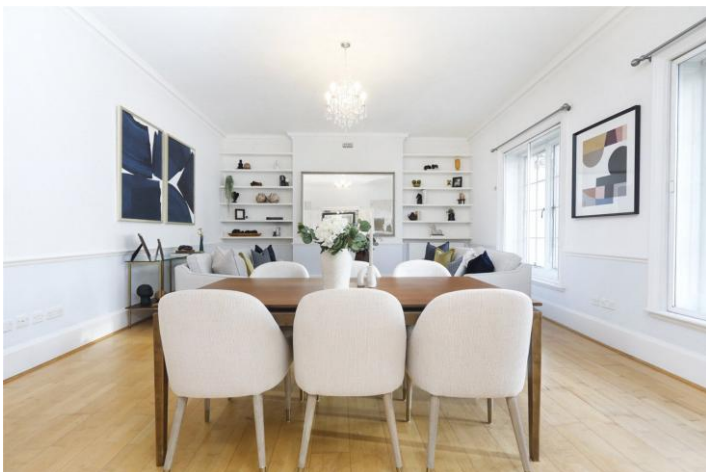
Winkworth

for every step...

winkworth.co.uk



DESCRIPTION: Positioned on the 2nd floor with lift access, the property boasts three double bedrooms (one with en suite), a substantially large reception room, fully equipped kitchen with new appliances and a newly refurbished family bathroom. Located within a very desirable location, you will find an abundance of business centres, retail shops, restaurants and bars at your doorstep. Transport links are second to none as Temple, Blackfriars & Chancery Lane Underground Stations all within a short walk as well as City Thameslink.



Winkworth

for every step...

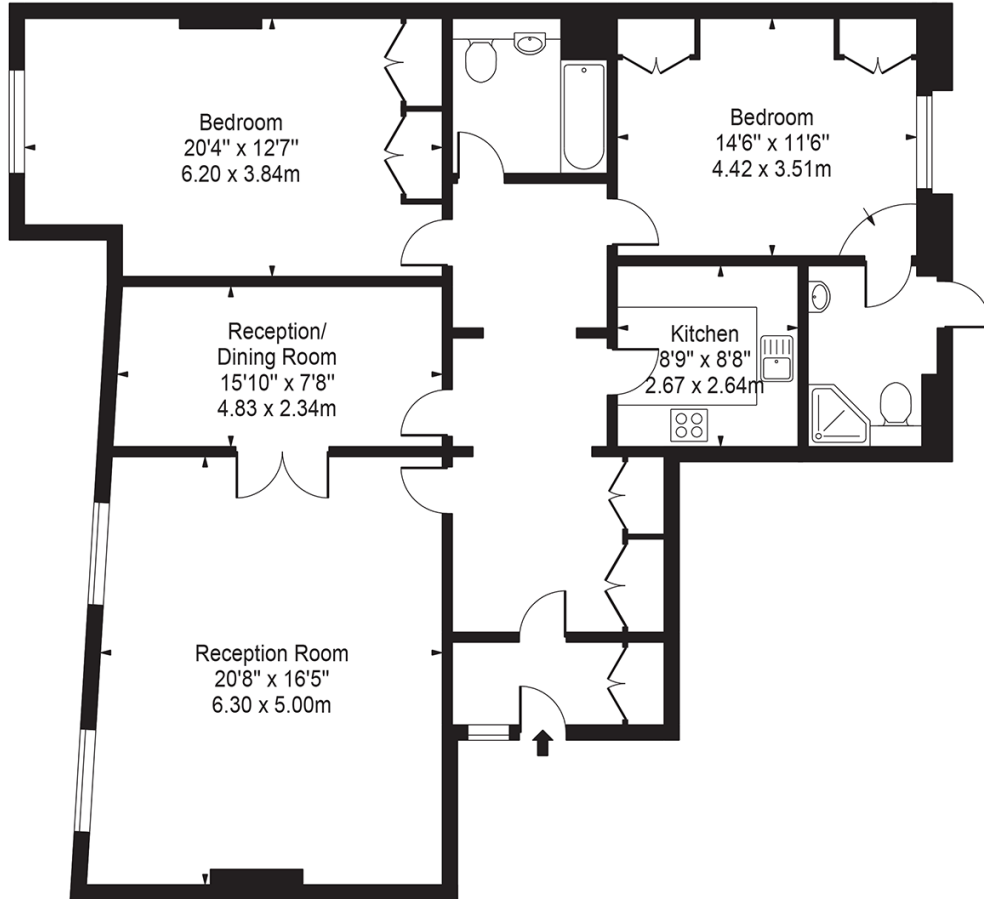


Winkworth

for every step...

Fleet Street

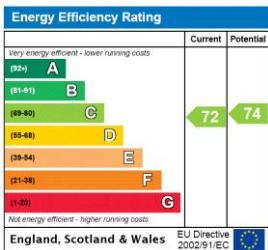
Approx. Gross Internal Area 1352 Sq Ft - 125.60 Sq M 



Second Floor
For Illustration Purposes Only - Not To Scale

This floor plan should be used as a general outline for guidance only and does not constitute in whole or in part an offer or contract. Any intending purchaser or lessee should satisfy themselves by inspection, searches, enquiries and full survey as to the correctness of each statement. Any areas, measurements or distances quoted are approximate and should not be used to value a property or be the basis of any sale or let.

This floorplan is for illustration purposes only and is not to scale. The position and size of doors, windows, appliances and other features are approximate.



Tenure: Leasehold

Term: 98 year and 0 months

Service Charge: Approx. £10,283 per annum

Ground Rent: Approx. £300 Annually (subject to increase)

Council Tax Band: G

Where no figures are shown, we have been unable to ascertain the information. All figures that are shown were correct at the time of printing.

Clerkenwell & City | 020 7405 1288 | clerkenwell@winkworth.co.uk



for every step...

winkworth.co.uk

Winkworth wishes to inform prospective buyers and tenants that these particulars are a guide and act as information only. All our details are given in good faith and believed to be correct at the time of printing but they don't form part of an offer or contract. No Winkworth employee has authority to make or give any representation or warranty in relation to this property. All fixtures and fittings, whether fitted or not are deemed removable by the vendor unless stated otherwise and room sizes are measured between internal wall surfaces, including furnishings.