



CHURCH DRIVE, KINGSBURY, LONDON, NW9
£600,000 FREEHOLD

LOVELY THREE BEDROOM MID TERRACE HOME

Kingsbury | 020 8204 0000 | kingsbury@winkworth.co.uk

Winkworth

for every step...

winkworth.co.uk



Discover your next home beautifully positioned in the sought after Church Drive, Kingsbury! This vibrant property is brimming with potential for a forever nest. Step inside to discover two generously sized reception rooms, ideal for entertaining and relaxing alike, and a minimalist kitchen flowing towards the garden which presents a private oasis for outdoor living. Venture upstairs to discover two double and one single bedrooms, a bathroom, and convenient separate W/C. Nestled in a vibrant community, with off-street parking and the exciting potential for extension (STPP), this property promises both comfort and future growth. An internal viewing is a must.



for every step...

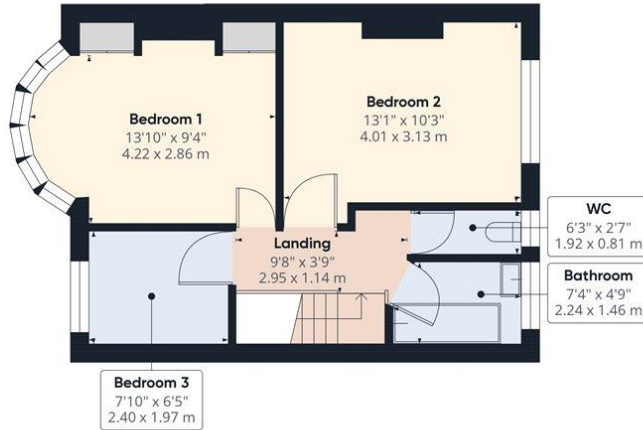


Winkworth

for every step...



Ground Floor



Floor 1

Approximate total area⁽¹⁾
841.95 ft²
78.22 m²

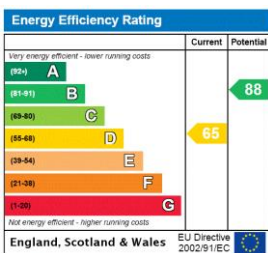
(1) Excluding balconies and terraces

While every attempt has been made to ensure accuracy, all measurements are approximate, not to scale. This floor plan is for illustrative purposes only.

Calculations are based on RICS IPMS 3C standard.

GIRAFFE360

This floorplan is for illustration purposes only and is not to scale. The position and size of doors, windows, appliances and other features are approximate.



Tenure: Freehold

Council Tax Band: D

Where no figures are shown, we have been unable to ascertain the information. All figures that are shown were correct at the time of printing.

Kingsbury | 020 8204 0000 | kingsbury@winkworth.co.uk



for every step...

winkworth.co.uk

Winkworth wishes to inform prospective buyers and tenants that these particulars are a guide and act as information only. All our details are given in good faith and believed to be correct at the time of printing but they don't form part of an offer or contract. No Winkworth employee has authority to make or give any representation or warranty in relation to this property. All fixtures and fittings, whether fitted or not are deemed removable by the vendor unless stated otherwise and room sizes are measured between internal wall surfaces, including furnishings.