



## Forsyth House, SW1V

£3,250 PER MONTH

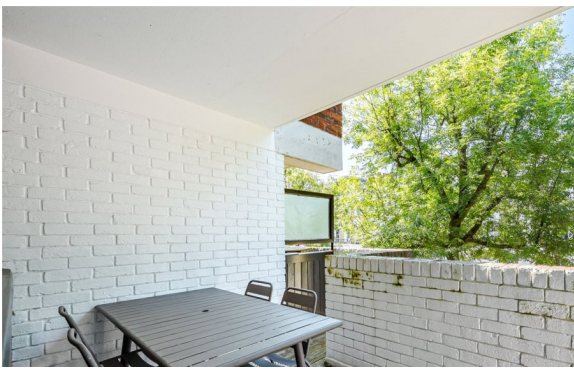
FURNISHED

### AT A GLANCE

- Three double bedrooms
- Family bathroom
- Modern kitchen
- Private balcony
- Hot water & heating included
- HMO license

**Winkworth**

for every step...



Energy Efficiency Rating		
	Current	Potential
Very energy efficient - lower running costs		
(92+) <b>A</b>		
(81-91) <b>B</b>		
(69-80) <b>C</b>	78	78
(55-68) <b>D</b>		
(39-54) <b>E</b>		
(21-38) <b>F</b>		
(1-20) <b>G</b>		
Not energy efficient - higher running costs		
England, Scotland & Wales	EU Directive 2002/91/EC	

## FORSYTH HOUSE, SW1V

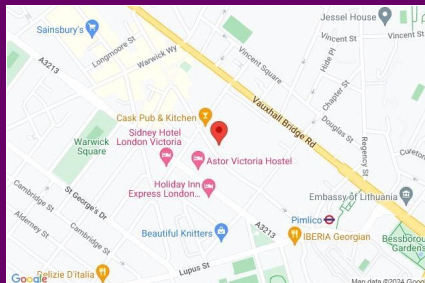
£3,250 PER MONTH

FURNISHED

A well sized, newly decorated, three bed flat in the heart of Pimlico. Arranged over three floors and with its own entrance, the property comprises of two good sized double bedrooms and a family bathroom with shower over bath on the top floor. The middle floor comprises of a third double bedroom, a large, modern eat in kitchen with all appliances and access out onto the private balcony. The good sized lounge can be found on the lower ground floor, making the flat feel super spacious throughout.

The flat further benefits from being fully furnished and hot water and heating is included in the rent.

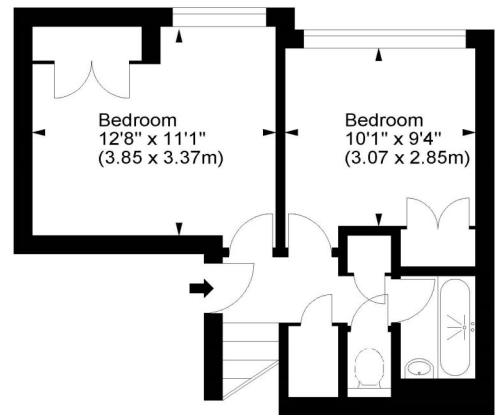
Transport links can be found via Pimlico Underground (Northern Line, 0.2miles) or via Victoria Station (0.4 miles) where there is a plethora of options - coach, underground, overground and bus links. There is also a superb range of



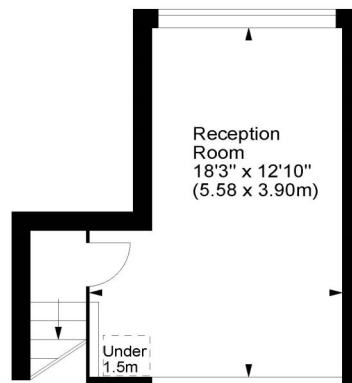
winkworth wishes to inform prospective buyers and tenants that these particulars are a guide and act as information only. All our details are given in good faith and believed to be correct at the time of printing but they don't form part of an offer or contract. No winkworth employee has authority to make or give any representation or warranty in relation to this property. All fixtures and fittings, whether fitted or not are deemed removable by the vendor unless stated otherwise and room sizes are measured between internal wall surfaces, including fire-chimneys.

### Forsyth House, SW1

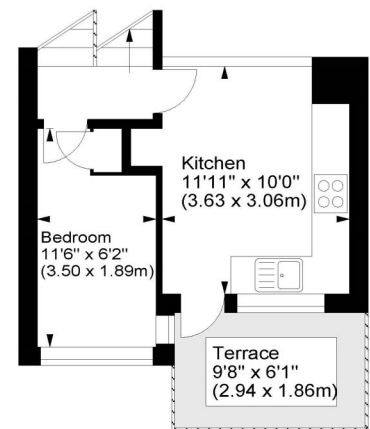
Approx. Gross Internal Area  
805 Sq Ft - 74.78 Sq M



Second Floor



First Floor



Mezzanine

For illustration purposes only. Not to scale.  
All measurements are taken and shown at floor level.  
[www.r3photography.co.uk](http://www.r3photography.co.uk) © Photography / Floor Plans / Lease Plans / EPCs



Pimlico & Westminster | 020 7828 1786 |

[pimlico@winkworth.co.uk](mailto:pimlico@winkworth.co.uk)

[winkworth.co.uk/pimlico](http://winkworth.co.uk/pimlico)

# Winkworth

for every step...