



MORDEN ROAD, BLACKHEATH, LONDON, SE3 0AD
OIEO £700,000 SHARE OF FREEHOLD

A SUBSTANTIAL AND IMPRESSIVE THREE BEDROOM APARTMENT WITH TWO TERRACES. OCCUPYING THE ENTIRE TOP FLOOR OF THIS MAGNIFICENT DOUBLE FRONTED DETACHED PERIOD HOUSE WITHIN THE PRESTIGIOUS CATOR ESTATE.

Blackheath | 0208 8520999 | blackheath@winkworth.co.uk



DESCRIPTION:

The superb home is in very good decorative order with period fireplaces, wood flooring and gas fired central heating. It spans 1,195 sq. ft. and occupies the entire top floor, (second) and has an entrance on the first. The accommodation briefly comprises; a large landing with skylight, a 17'11 x 13'10 reception room and large 17'9 x 11'7 kitchen diner with direct access to a private terrace. There is a large 17'11 x 11'8 double bedroom to the front, again with a private terrace, a 13'9 x 12'5 double bedroom to the rear, a third bedroom currently used as a study and a bathroom. To the rear is an outstanding communal garden extending to approx. 150ft with a sweeping gravelled driveway with an allocated off-road parking space to the front.

This is an impressive home and is sold with a share of the freehold and chain free. Your immediate viewing is essential. Virtual tours can be seen at winkworth.co.uk

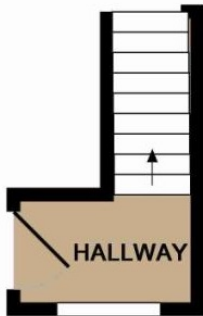
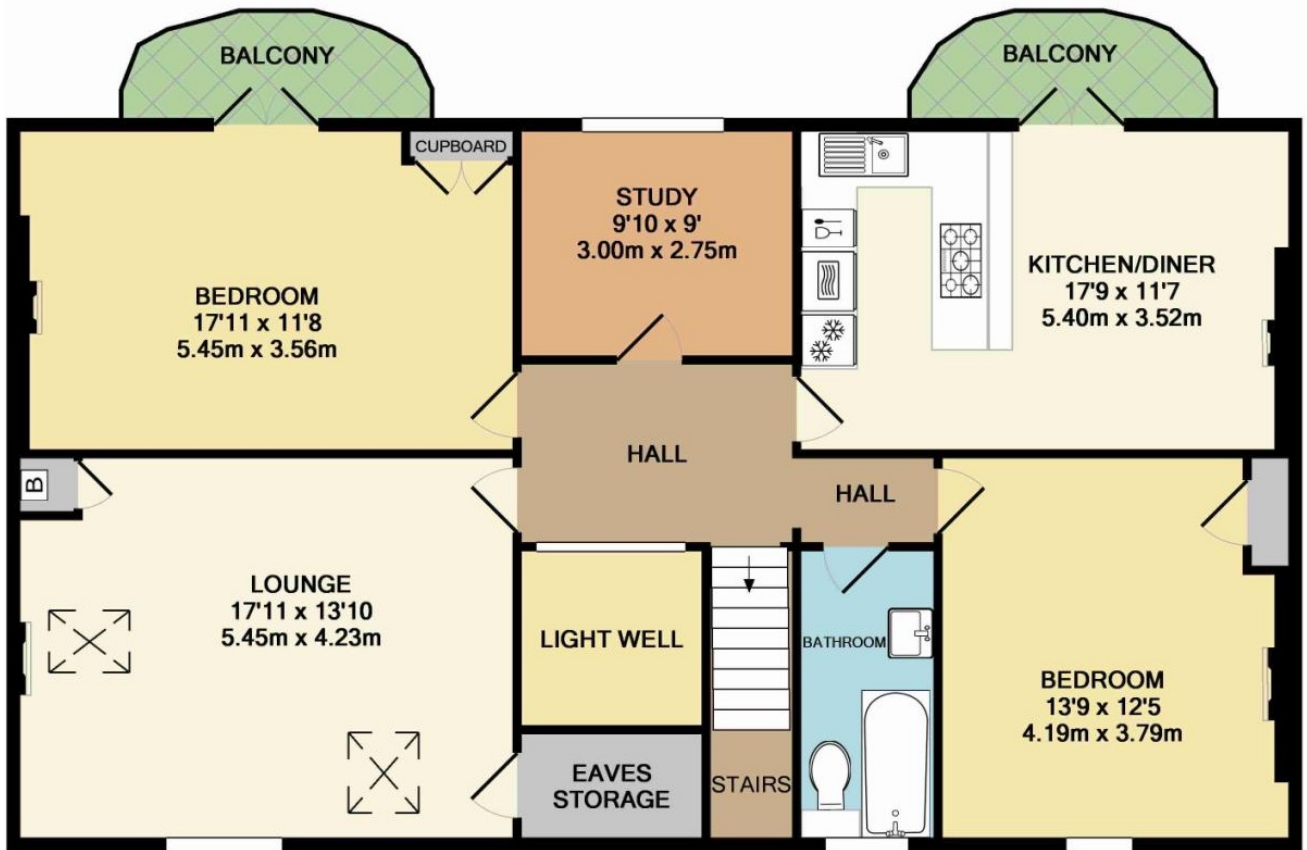
The property is located on the prestigious private Cator Estate and is just 200 metres from the Heath and a short walk into Blackheath Village with its array of boutique shops, restaurants, bars and mainline station with connections to all the main London Terminals. It is also just 10 minutes to Greenwich Park.

AT A GLANCE

- substantial apartment
- three bedrooms
- 1,195 sq.ft
- two private terraces
- kitchen diner
- outstanding communal garden
- off street parking







ENTRANCE HALL
APPROX. FLOOR
AREA 47 SQ.FT.
(4.4 SQ.M.)

APPROX. FLOOR
AREA 1147 SQ.FT.
(106.6 SQ.M.)

TOTAL APPROX. FLOOR AREA 1195 SQ.FT. (111.0 SQ.M.)

Whilst every attempt has been made to ensure the accuracy of the floor plan contained here, measurements of doors, windows, rooms and any other items are approximate and no responsibility is taken for any error, omission, or mis-statement. This plan is for illustrative purposes only and should be used as such by any prospective purchaser. The services, systems and appliances shown have not been tested and no guarantee as to their operability or efficiency can be given

This floorplan is for illustration purposes only and is not to scale. The position and size of doors, windows, appliances and other features are approximate.

