



REGAL WAY, HARROW, MIDDLESEX, HA3
£635,000 FREEHOLD

CHARMING THREE BEDROOM HOUSE IN KENTON

Kingsbury | 020 8204 0000 | kingsbury@winkworth.co.uk

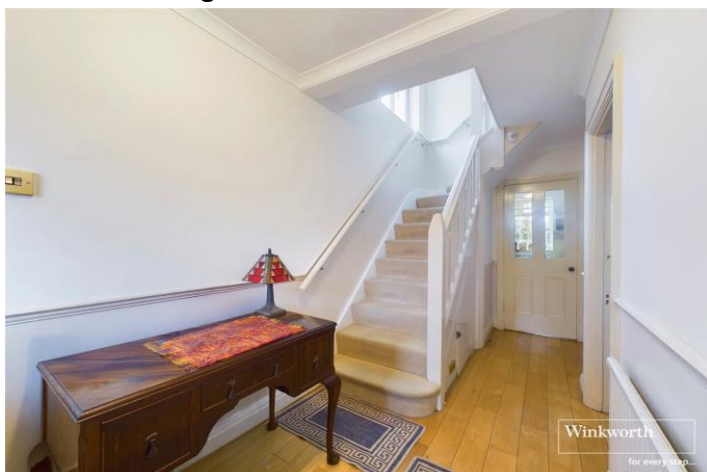
Winkworth

for every step...

winkworth.co.uk



Nestled in the desirable Woodcock Hill Estate, this delightful three-bedroom semi-detached home exudes charm and comfort. The inviting living room boasts a gorgeous fireplace, perfect for cozy evenings, while the open-plan kitchen and dining room create an ideal space for family gatherings. Upstairs, you'll find two double bedrooms, a comfortable single bedroom, and a neutral, well-appointed family bathroom. Step outside to a stunning rear garden, offering a peaceful retreat and abundance of space for outdoor enjoyment & gardening enthusiasts. The property also benefits from the potential to extend (STPP). Conveniently located close to the highly regarded Claremont and St. Gregory's schools, the open green spaces of Woodcock Park, and the amenities and transport links of Kenton Road, this home is perfectly appointed. An internal viewing is advised.

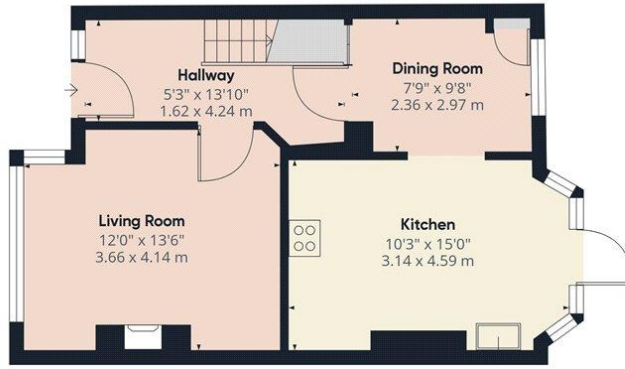


for every step...

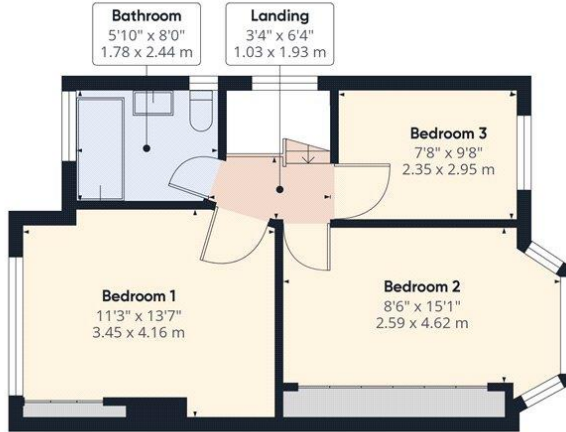


Winkworth

for every step...



Ground Floor



Floor 1

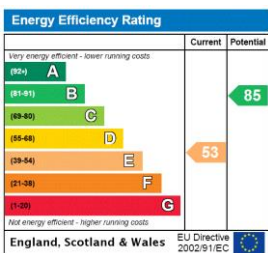
Approximate total area⁽¹⁾
 896.86 ft²
 83.32 m²

(1) Excluding balconies and terraces

While every attempt has been made to ensure accuracy, all measurements are approximate, not to scale. This floor plan is for illustrative purposes only. Calculations are based on RICS IPMS 3C standard.

GIRAFFE360

This floorplan is for illustration purposes only and is not to scale. The position and size of doors, windows, appliances and other features are approximate.



Tenure: Freehold

Council Tax Band: E - Brent

Where no figures are shown, we have been unable to ascertain the information. All figures that are shown were correct at the time of printing.

Kingsbury | 020 8204 0000 | kingsbury@winkworth.co.uk