

MELINA PLACE, LONDON, NW8 £2,500,000 FREEHOLD

A unique house set over only two floors, discreetly located in one of St John's Wood's most exclusive and sought-after enclaves. Approached through an understated gated entrance, the off-street position of this house makes it a particularly peaceful location. The house benefits from a 24' reception room and an 18' kitchen/breakfast room leading onto the private garden. Other features include parking for one car, air conditioning and a private walled west facing garden. Melina Place is located approximately 0.5 miles from St John's Wood High Street with its mix of restaurants, cafes and shops. The closest Underground Stations are St John's Wood (Jubilee line) and Maida Vale (Bakerloo line)

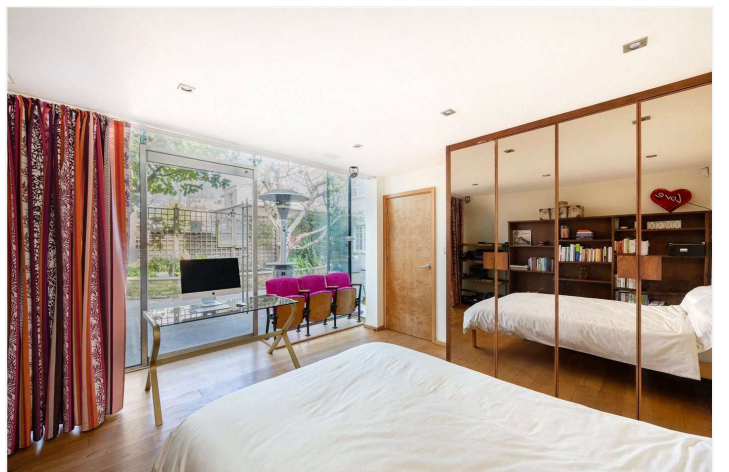
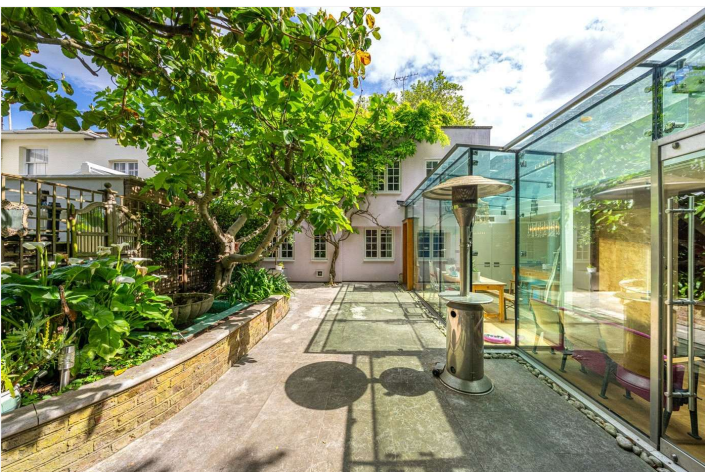
Principal Bedroom With En Suite Bathroom & Dressing Room | Two Further Bedrooms | Shower Room | 24ft Reception Room | Private Garden | Air Conditioning | Low Built Two Floor House | Parking for One Car | Freehold

View our virtual tour here: <https://www.youtube.com/watch?v=eucJobXlwTk>

winkworth.co.uk/st-johns-wood

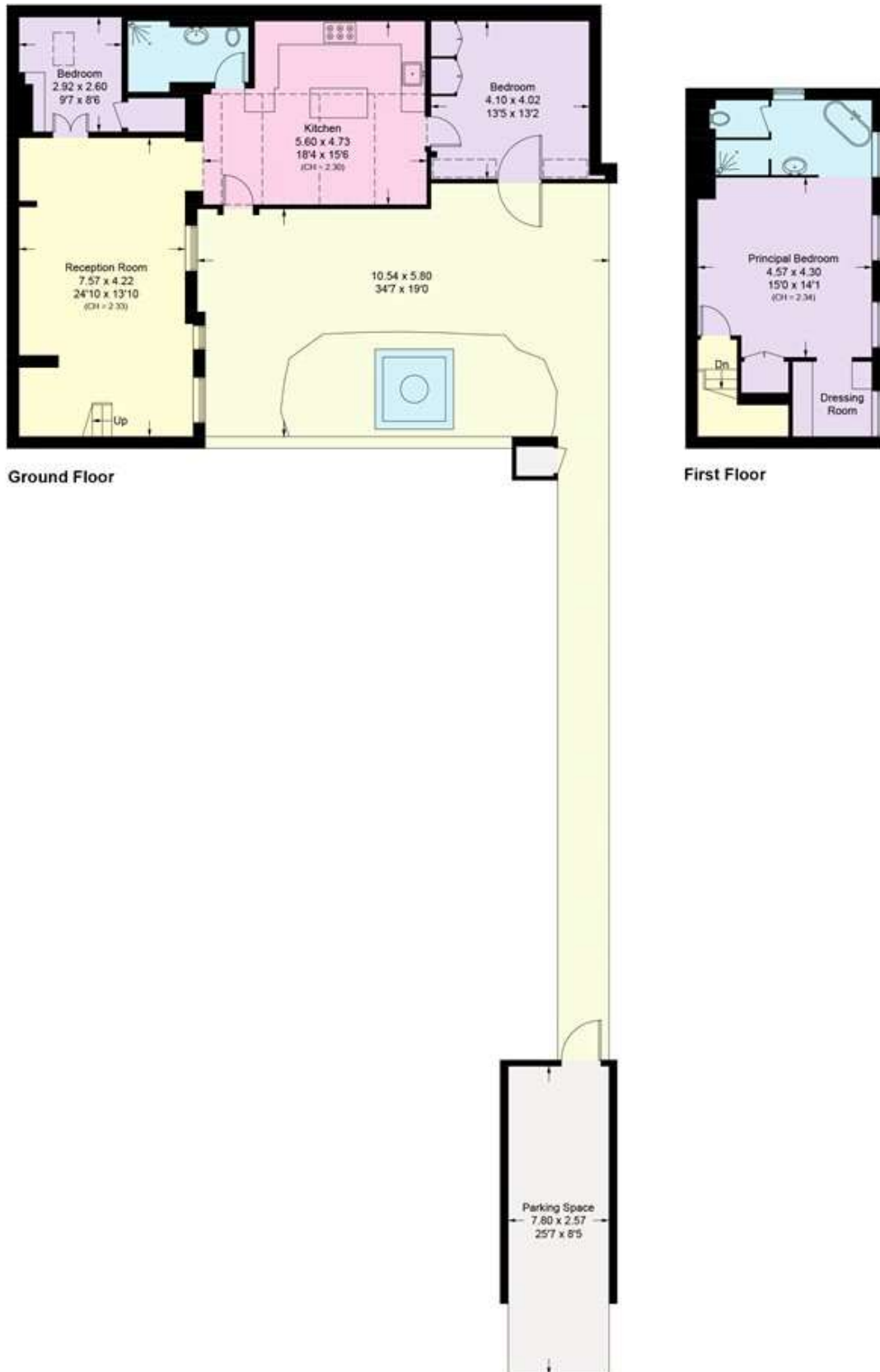
Winkworth

for every step...

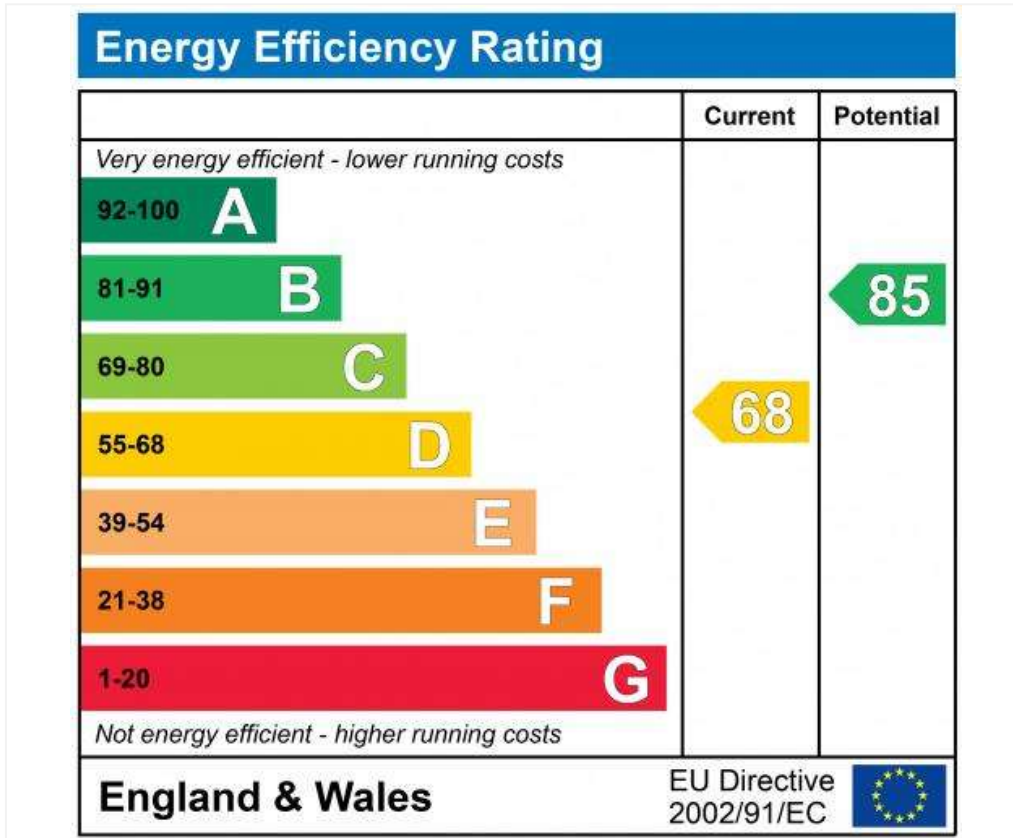


Melina Place, NW8

Approximate Gross Internal Area = 131.0 sq m / 1411 sq ft



This plan is for layout guidance only. Not drawn to scale unless stated. Windows and door openings are approximate. Whilst every care is taken in the preparation of this plan, please check all dimensions, shapes and compass bearings before making any decisions reliant upon them. (ID1055581)



Tenure: Freehold

Council Tax Band: H

Where no figures are shown, we have been unable to ascertain the information. All figures that are shown were correct at the time of printing.

Where no figures are shown, we have been unable to ascertain the information. All figures that are shown were correct at the time of printing. These particulars are not an offer or contract, nor part of one. You should not rely on statements by Winkworth in the particulars or by word of mouth or in writing "information" as being factually accurate about the property, its condition or its value. Winkworth does not have any authority to make any representations about the property, and accordingly any information given is entirely without responsibility on the part of the agents, seller(s) or lessor(s). These particulars are prepared on the basis of the information supplied by our client and are a rough guide for information only. The photographs show only certain parts of the property. We are not able to check all of the information and therefore are unable to guarantee accuracy. All interested parties are therefore advised to undertake all necessary inspections and checks that they deem appropriate. Where displayed, the square footage is taken from the floor plans, which are created by an independent supplier. These measurements are approximate and included for illustrative purposes only. The measurements may vary. Winkworth does not make any representation as to the accuracy of these measurements and you should seek to verify them for yourself. Winkworth accept no liability for any loss you may suffer if you rely on these measurements. All fixtures and fittings, whether fitted or not are deemed removable by the vendor unless stated. Any reference to alterations to, or use of, any part of the property does not mean that any necessary planning, building regulations or other consent has been obtained. Amenities and appliances have not been tested



St John's Wood | 103-104 St. Johns Wood Terrace, London, NW8 6PL | 020 7586 7001 | stjohnswood@winkworth.co.uk

for every step...

winkworth.co.uk/st-johns-wood

Winkworth wishes to inform prospective buyers and tenants that these particulars are a guide and act as information only. All our details are given in good faith and believed to be correct at the time of printing but they don't form part of an offer or contract. No Winkworth employee has authority to make or give any representation or warranty in relation to this property. All fixtures and fittings, whether fitted or not are deemed removable by the vendor unless stated otherwise and room sizes are measured between internal wall surfaces, including furnishings.