



RANELAGH GARDENS, SW6 £700,000 LEASEHOLD

A well arranged two double bedroom flat located in the immensely popular gated mansion block situated on the bank of the River Thames in Fulham.

Fulham & Parsons Green | 020 7731 3388 | fulham@winkworth.co.uk

Winkworth

for every step...

winkworth.co.uk



DESCRIPTION

Situated on the ground floor of the mansion block, this well-proportioned flat spans just over 700 Sq. Ft. There is a good sized kitchen/reception room with ample storage space and is flooded with natural light. The two double bedrooms both have useful build in cupboard space and are served by a shower room and bathroom.

Hurlingham Court benefits from excellent security with a live in resident manager available during working hours and communal areas. It also benefits from wonderful private riverside gardens.

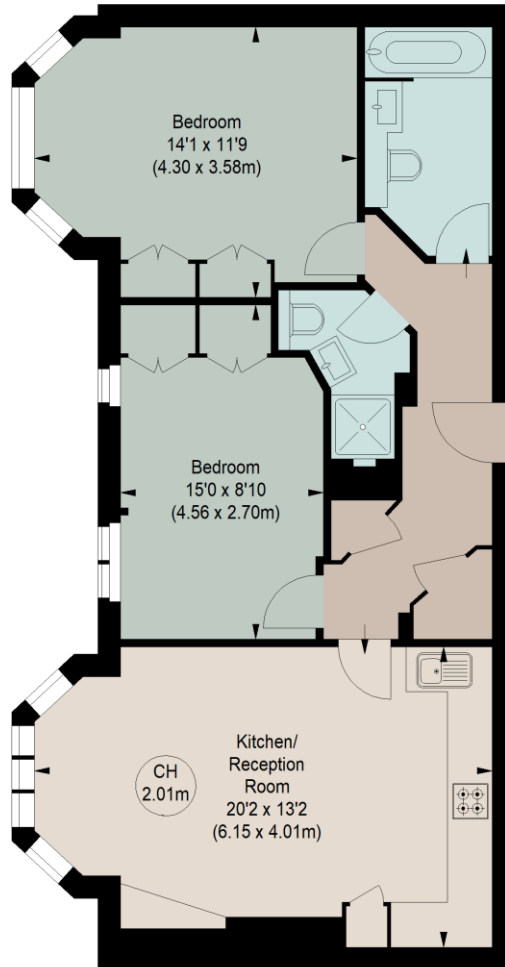
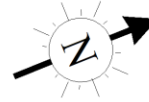
The property is located in one of Fulham's most desirable areas on the River Thames in close proximity to the popular Hurlingham Club and park. The nearest underground station is Putney Bridge which is approximately 500 yards from Hurlingham Court and there are several bus routes linking the property to central and south London.



HURLINGHAM COURT, SW6

Approximate gross internal area

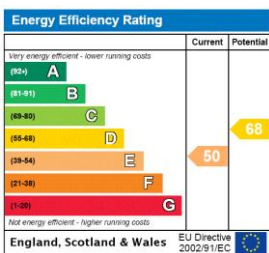
702 sq ft / 65.22 sq m
 Key : CH - Ceiling Height



GROUND FLOOR

The floor plan is not to scale and measurements and areas shown are approximate and therefore should be used for illustrative purposes only. The plan has been prepared in accordance with the RICS code of Measuring Practice and whilst we have confidence in the information produced, it must not be relied on. If there is any aspect of particular importance, you should carry out or commission your own inspection of the property.

This floorplan is for illustration purposes only and is not to scale. The position and size of doors, windows, appliances and other features are approximate.



Tenure: Leasehold

Term: 945 years

Service Charge: Ask agent

Ground Rent: £90 Annually

Council Tax Band: F

Where no figures are shown, we have been unable to ascertain the information. All figures that are shown were correct at the time of printing.

Fulham & Parsons Green | 020 7731 3388 | fulham@winkworth.co.uk



for every step...

winkworth.co.uk

Winkworth wishes to inform prospective buyers and tenants that these particulars are a guide and act as information only. All our details are given in good faith and believed to be correct at the time of printing but they don't form part of an offer or contract. No Winkworth employee has authority to make or give any representation or warranty in relation to this property. All fixtures and fittings, whether fitted or not are deemed removable by the vendor unless stated otherwise and room sizes are measured between internal wall surfaces, including furnishings.